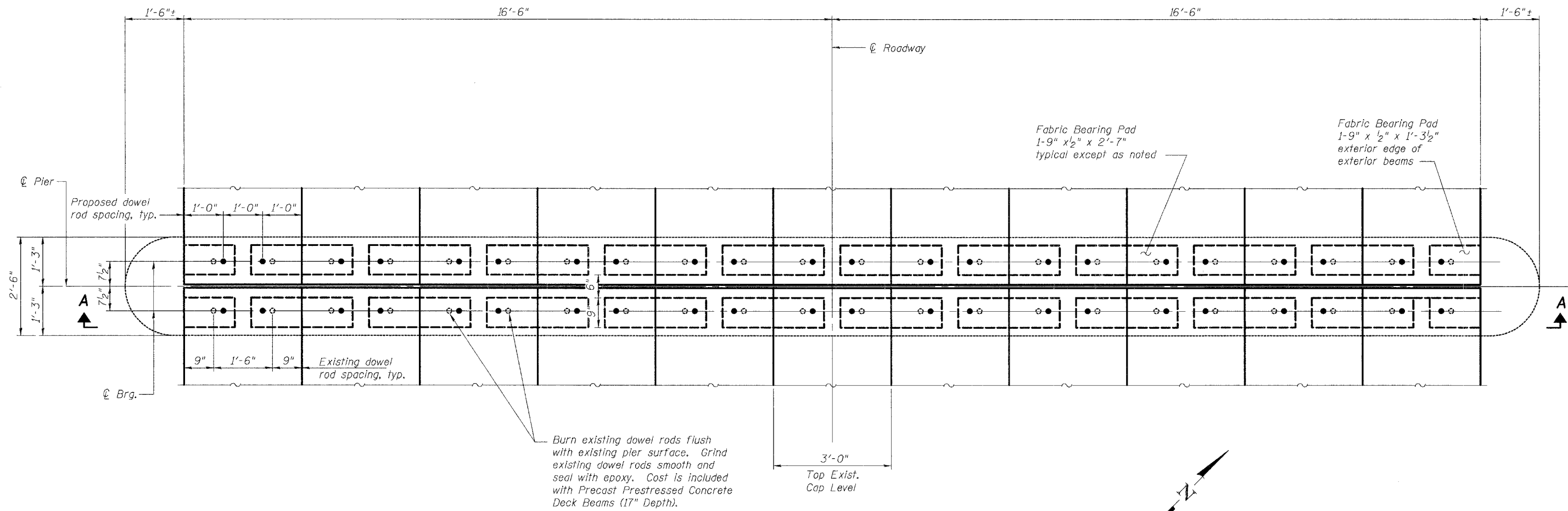


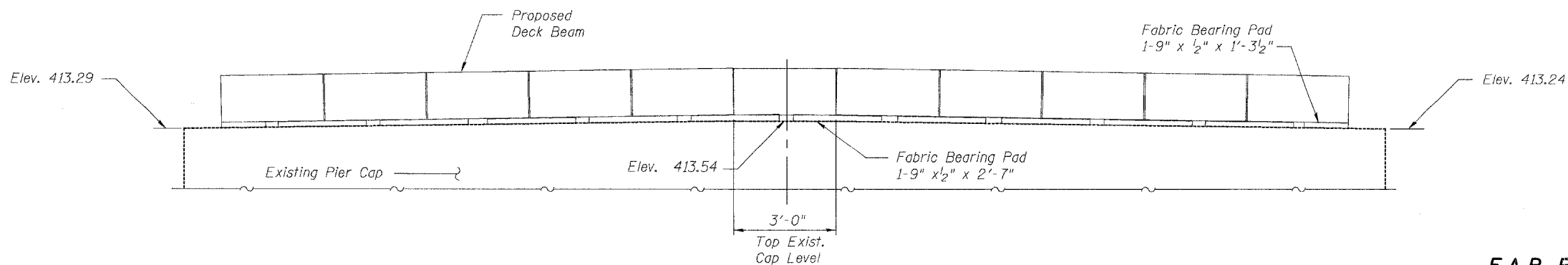
STATE OF ILLINOIS
DEPARTMENT OF TRANSPORTATION

ROUTE NO.	SECTION	COUNTY	TOTAL SHEETS	SHEET NO.	SHEET NO. 19 21 SHEETS
F.A.P. 592	28BR-2	ST. CLAIR	51	49	
FED. ROAD DIST. NO. 7	ILLINOIS	FED. AID PROJECT			



PLAN

(Concrete curb and concrete wearing surface not shown.)



VIEW A-A

(Concrete wearing surface not shown.)
(Looking North)

DESIGNED	ADL
CHECKED	WLW
DRAWN	RJP
CHECKED	ADL

PIER 1
F.A.P. ROUTE 592 - SECTION 28BR-2
ST. CLAIR COUNTY
STATION 437+31.90
STRUCTURE NO. 082-0212

6/13/2006

p:\02files\020409\020409-22 W0 No11 IL13-157\SN 0 10212.dgn