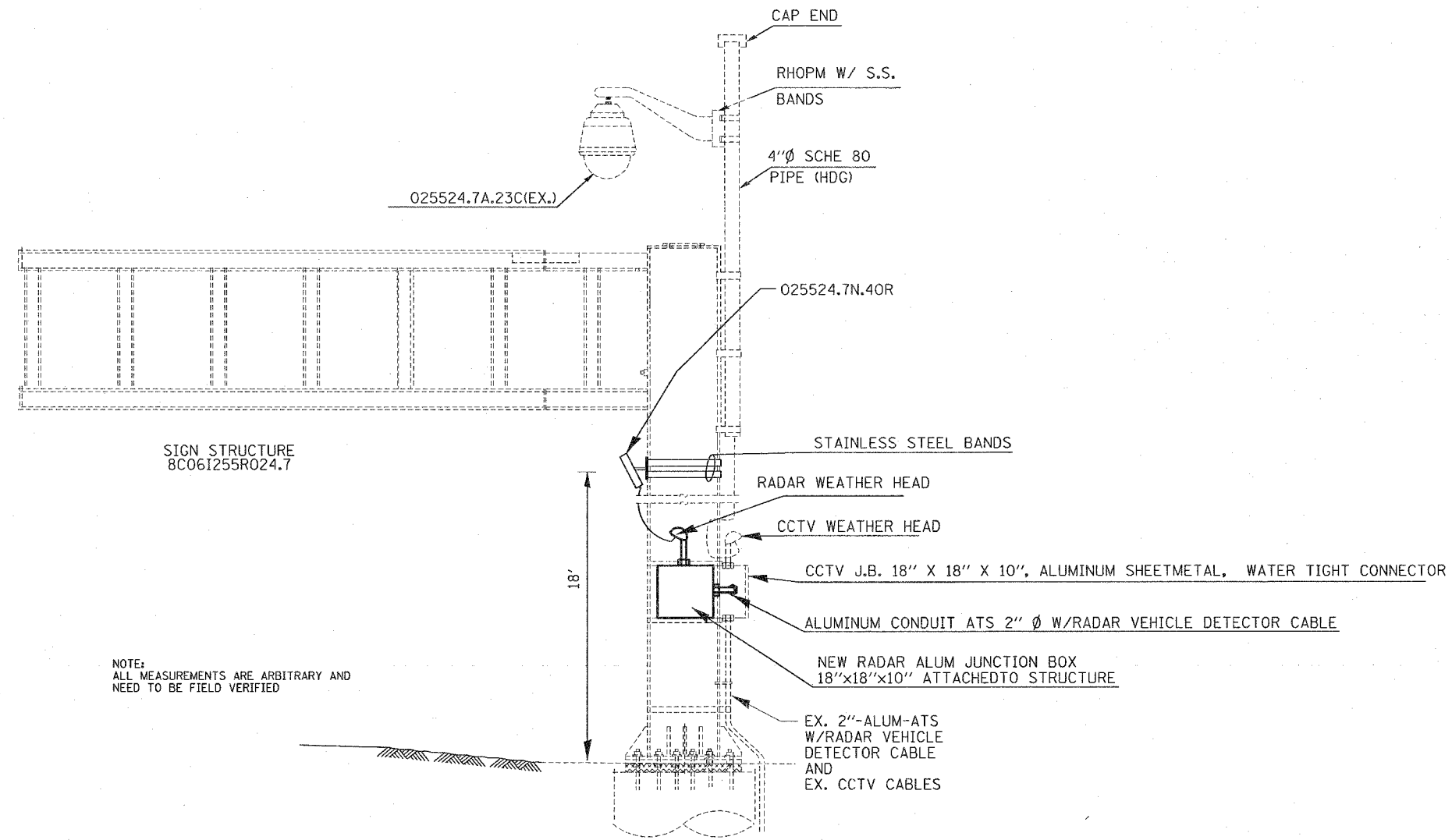


F.A.I. RTE.	SECTION	COUNTY	TOTAL SHEETS	SHEET NO.
255			35	7
STA. _____		TO STA. _____		
FED. ROAD DIST. NO. _____		ILLINOIS FED. AID PROJECT		

• DIST 8 ITS 2007-1, 2A
 • MADISON & ST CLAIR COUNTIES



NOTE:
 ALL MEASUREMENTS ARE ARBITRARY AND
 NEED TO BE FIELD VERIFIED

NOT TO SCALE

1. INSTALL 2"-ALUM-ATS BETWEEN THE NEW AND EX. JUNCTION BOXES
2. INSTALL 2C-#10/#10G CABLES FROM THE EX. JUNCTION BOX POWER TERMINALS TO THE THE NEW JUNCTION BOX POWER TERMINALS

REVISIONS	
NAME	DATE

ILLINOIS DEPARTMENT OF TRANSPORTATION

TRUSS MOUNTED RADAR
 VEHICLE DETECTION DETAILS

FAI 255
 SECTION DIST 8 ITS 2007-1, 2A
 MADISON & ST CLAIR COUNTIES

DATE 12/11/2006

PLOT DATE = 12/11/2006
 FILE NAME = c:\projects\76979\electrical\truss\truss.dgn
 PLOT SCALE = 1/8" = 1'-0"
 REFERENCE = #REF#