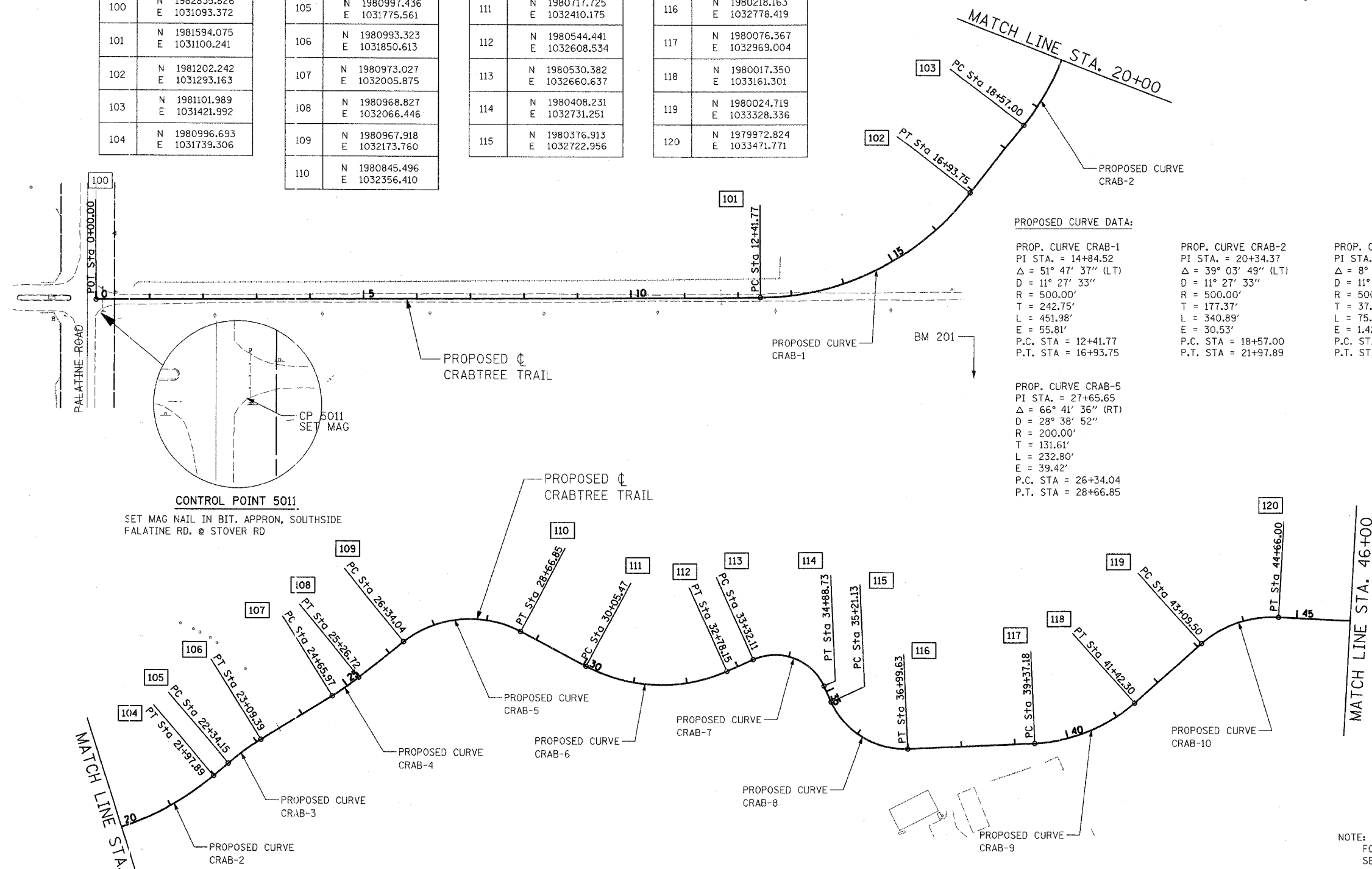


SECTION	COUNTY	TOTAL SHEETS	SHEET NO.
94-F3000-06-BT	COOK	105	9
STA. 0+00	TO STA. 46+00		
FED. ROAD DIST. NO.	ILLINOIS	83709	STPE-D001(479)

COORDINATE DATA:

100	N 1982835.826 E 1031093.372	105	N 1980997.436 E 1031775.561	111	N 1980717.725 E 1032410.175	116	N 1980218.163 E 1032778.419
101	N 1981594.075 E 1031100.241	106	N 1980993.323 E 1031850.613	112	N 1980544.441 E 1032608.534	117	N 1980076.367 E 1032969.004
102	N 1981202.242 E 1031293.163	107	N 1980973.027 E 1032005.875	113	N 1980530.382 E 1032660.637	118	N 1980017.350 E 1033161.301
103	N 1981101.989 E 1031421.992	108	N 1980968.827 E 1032066.446	114	N 1980408.231 E 1032731.251	119	N 1980024.719 E 1033328.336
104	N 1980996.693 E 1031739.306	109	N 1980967.918 E 1032173.760	115	N 1980376.913 E 1032722.956	120	N 1979972.824 E 1033471.771
		110	N 1980845.496 E 1032356.410				



PROPOSED CURVE DATA:

<p>PROP. CURVE CRAB-1 PI STA. = 14+84.52 $\Delta = 51^\circ 47' 37''$ (LT) D = 11° 27' 33" R = 500.00' T = 242.75' L = 451.98' E = 55.81' P.C. STA = 12+41.77 P.T. STA = 16+93.75</p>	<p>PROP. CURVE CRAB-2 PI STA. = 20+34.37 $\Delta = 39^\circ 03' 49''$ (LT) D = 11° 27' 33" R = 500.00' T = 177.37' L = 340.89' E = 30.53' P.C. STA = 18+57.00 P.T. STA = 21+97.89</p>	<p>PROP. CURVE CRAB-3 PI STA. = 22+71.84 $\Delta = 8^\circ 37' 17''$ (RT) D = 11° 27' 33" R = 500.00' T = 37.69' L = 75.24' E = 1.42' P.C. STA = 22+34.15 P.T. STA = 23+09.39</p>	<p>PROP. CURVE CRAB-4 PI STA. = 24+96.38 $\Delta = 6^\circ 57' 43''$ (LT) D = 11° 27' 33" R = 500.00' T = 30.41' L = 60.75' E = 0.92' P.C. STA = 24+65.97 P.T. STA = 25+26.72</p>
<p>PROP. CURVE CRAB-5 PI STA. = 27+65.65 $\Delta = 66^\circ 41' 36''$ (RT) D = 28° 38' 52" R = 200.00' T = 131.61' L = 232.80' E = 39.42' P.C. STA = 26+34.04 P.T. STA = 28+66.85</p>			

PROPOSED CURVE DATA:

<p>PROP. CURVE CRAB-6 PI STA. = 31+52.04 $\Delta = 52^\circ 04' 40''$ (LT) D = 19° 05' 55" R = 300.00' T = 146.57' L = 272.68' E = 33.89' P.C. STA = 30+05.47 P.T. STA = 32+78.15</p>	<p>PROP. CURVE CRAB-7 PI STA. = 34+31.65 $\Delta = 89^\circ 44' 01''$ (RT) D = 57° 17' 45" R = 100.00' T = 99.54' L = 156.61' E = 41.09' P.C. STA = 33+32.11 P.T. STA = 34+88.73</p>	<p>PROP. CURVE CRAB-8 PI STA. = 36+22.66 $\Delta = 68^\circ 11' 08''$ (LT) D = 38° 11' 50" R = 150.00' T = 101.53' L = 178.51' E = 31.13' P.C. STA = 35+21.13 P.T. STA = 36+99.63</p>	<p>PROP. CURVE CRAB-9 PI STA. = 40+43.93 $\Delta = 39^\circ 10' 31''$ (LT) D = 19° 05' 55" R = 300.00' T = 106.75' L = 205.12' E = 18.43' P.C. STA = 39+37.18 P.T. STA = 41+42.30</p>	<p>PROP. CURVE CRAB-10 PI STA. = 43+92.00 $\Delta = 44^\circ 49' 59''$ (RT) D = 28° 38' 52" R = 200.00' T = 82.50' L = 156.50' E = 16.35' P.C. STA = 43+09.50 P.T. STA = 44+66.00</p>
--	---	--	--	--

NOTE:
FOR CONTROL POINT AND BENCHMARK INFORMATION
SEE SHEET 10.

ILLINOIS DEPARTMENT OF TRANSPORTATION
DISTRICT NO. 1 SCHAUMBURG

ALIGNMENT, BENCHMARKS,
AND TIES

SCALE AS NOTED
DATE MARCH 28, 2006
DRAWN BY RTA
CHECKED BY SMH

