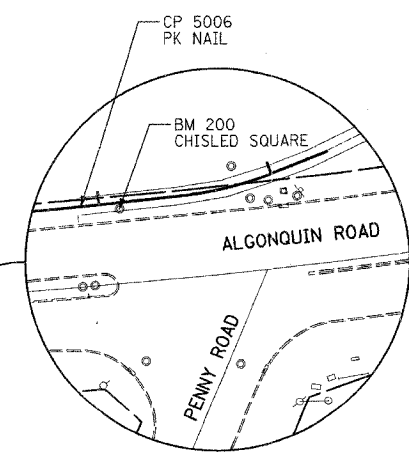
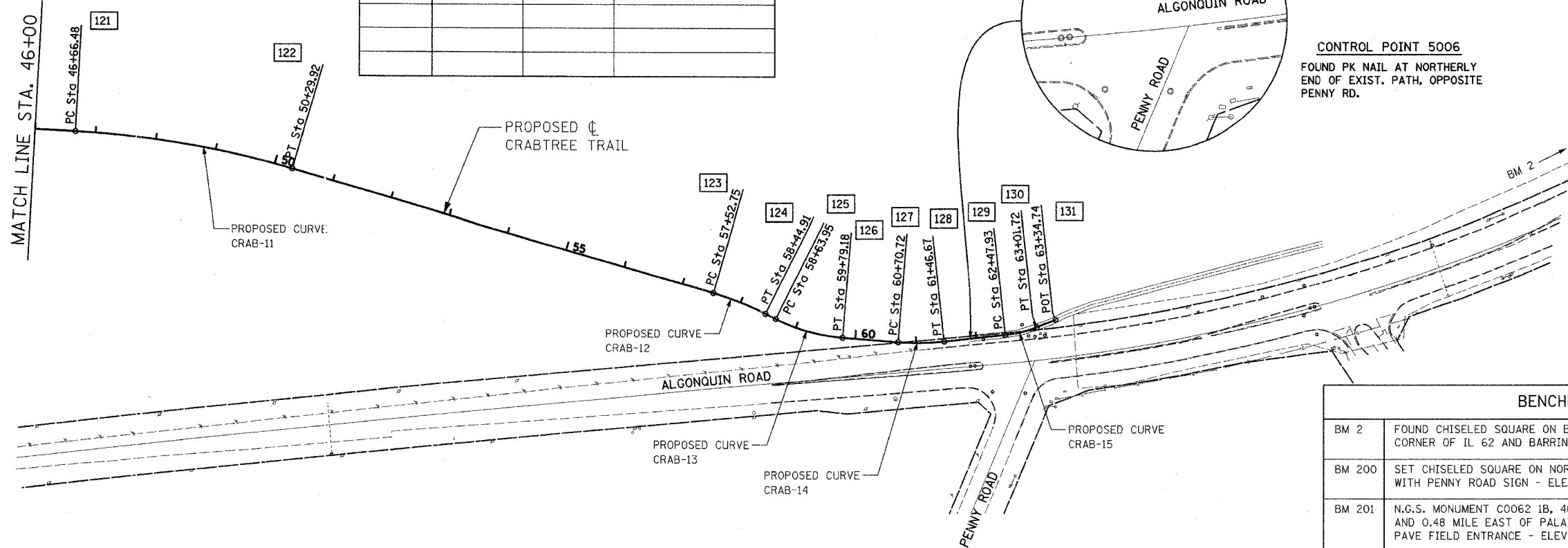
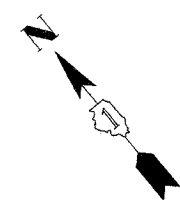


FAP NO.	SECTION	COUNTY	TOTAL SHEETS	SHEET NO.
94-F3000-06-BT		COOK	105	10
STA. 45+00	TO STA. 62+15			
FED. ROAD DIST. NO.	ILLINOIS	83709	STPE-D001(479)	

CONTROL POINTS			
POINT	NORTHING	EASTING	ELEVATION DESCRIPTION
CP 5001	1967224.771	1043825.964	801.821 SET MAG
CP 5003	1969699.422	1041617.710	835.613 FIP W/CAP
CP 5006	1978641.129	1034549.744	869.265 FPK
CP 5011	1982826.167	1031076.936	874.039 SETMAG
CP 5014	1975607.321	1041753.605	848.499 SET MAG



CONTROL POINT 5006
 FOUND PK NAIL AT NORTHERLY
 END OF EXIST. PATH, OPPOSITE
 PENNY RD.



COORDINATE DATA:

121	N 1979837.879 E 1033620.037
122	N 1979564.945 E 1033858.852
123	N 1978970.521 E 1034270.116

124	N 1978890.341 E 1034315.291
125	N 1978872.962 E 1034323.071
126	N 1978779.293 E 1034388.952

127	N 1978715.847 E 1034454.936
128	N 1978668.700 E 1034514.343
129	N 1978613.553 E 1034599.272

130	N 1978590.643 E 1034647.755
131	N 1978580.666 E 1034679.230

PROPOSED CURVE DATA:

PROP. CURVE CRAB-11
 PI STA. = 46+48.99
 $\Delta = 13^\circ 00' 54''$ (RT)
 $D = 3^\circ 34' 52''$
 $R = 1,600.00'$
 $T = 182.51'$
 $L = 363.44'$
 $E = 10.38'$
 P.C. STA = 46+66.48
 P.T. STA = 50+29.92

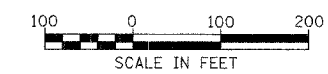
PROP. CURVE CRAB-12
 PI STA. = 57+98.96
 $\Delta = 10^\circ 33' 39''$ (RT)
 $D = 11^\circ 27' 33''$
 $R = 500.00'$
 $T = 46.21'$
 $L = 92.16'$
 $E = 2.13'$
 P.C. STA = 57+52.75
 P.T. STA = 58+44.91

PROP. CURVE CRAB-13
 PI STA. = 59+22.28
 $\Delta = 22^\circ 00' 22''$ (LT)
 $D = 19^\circ 05' 55''$
 $R = 300.00'$
 $T = 58.33'$
 $L = 115.22'$
 $E = 5.62'$
 P.C. STA = 58+63.95
 P.T. STA = 59+79.18

PROP. CURVE CRAB-14
 PI STA. = 61+08.81
 $\Delta = 10^\circ 52' 48''$ (LT)
 $D = 14^\circ 19' 26''$
 $R = 400.00'$
 $T = 38.09'$
 $L = 75.96'$
 $E = 1.81'$
 P.C. STA = 60+70.72
 P.T. STA = 61+46.67

PROP. CURVE CRAB-15
 PI STA. = 62+74.99
 $\Delta = 15^\circ 24' 30''$ (LT)
 $D = 28^\circ 38' 52''$
 $R = 200.00'$
 $T = 27.06'$
 $L = 53.79'$
 $E = 1.82'$
 P.C. STA = 62+47.93
 P.T. STA = 63+01.72

BENCHMARKS	
BM 2	FOUND CHISELED SQUARE ON BASE OF TRAFFIC AT NW CORNER OF IL 62 AND BARRINGTON ROAD - ELEV. 864.953
BM 200	SET CHISELED SQUARE ON NORTH SIDE OF TRAFFIC SIGNAL WITH PENNY ROAD SIGN - ELEV. 869.717
BM 201	N.G.S. MONUMENT C0062 1B, 46.4 FEET SOUTH OF CL OF IL. RT. 62 AND 0.48 MILE EAST OF PALATINE ROAD, 55 FEET WEST OF CL OF PAVE FIELD ENTRANCE - ELEV. 870.627
BM 204	CHISELED SQUARE IN SE CORNER OF TSCV IN RIGHT TURN MEDIAN FOR SB TRAFFIC AT ROSELLE AND ALGONQUIN RD. - ELEV. 783.356
BM 210	MAG NAIL SET IN NORTH GUARDRAIL POST ON EAST SIDE OF ROSELLE ROAD NORTH OF CENTRAL RD. - ELEV. 752.865
BM 213	N.G.S. MONUMENT C00 IDOT A, 235 FEET WEST OF CL OF BITUM. ENTRANCE, 22 FEET NORTH OF BACK OF CURB OF CENTRAL RD., 2.0 FEET S. OF ORANGE FIBERGLASS WITNESS POST - ELEV. 771.223
BM 215	NORTHEAST CORNER OF CONCRETE PAD FOR A CONTROL BOX AT SE CORNER OF CENTRAL AND ELA ROAD - ELEV. 772.058
BM 216	MAG NAIL SET IN EAST GUARDRAIL POST ON NORTH SIDE OF CENTRAL 750 FEET +/- WEST OF ELA ROAD - ELEV. 774.271
BM 219	FOUND BRASS DISC IN CL OF CENTRAL RD. 2000 FEET +/- WEST OF ELA ROAD - ELEV. 796.374
BM 222	MAG NAIL SET IN EASTERLY MOST GUARDRAIL POST ON NORTH SIDE OF CENTRAL RD. 150 FEET WEST OF HOUSE #1200 - ELEV. 816.119
BM 228	NORTHEAST BOLT ON 4TH HIGH TENSION POWER POLE WEST OF PRESERVE ENTRANCE ON SOUTH SIDE OF CENTRAL RD. - ELEV. 800.761



ILLINOIS DEPARTMENT OF TRANSPORTATION
 DISTRICT NO. 1 SCHAUMBURG
**ALIGNMENT, BENCHMARKS,
 AND TIES**
 SCALE AS NOTED
 DATE MARCH 28, 2006
 DRAWN BY RTA
 CHECKED BY SMH