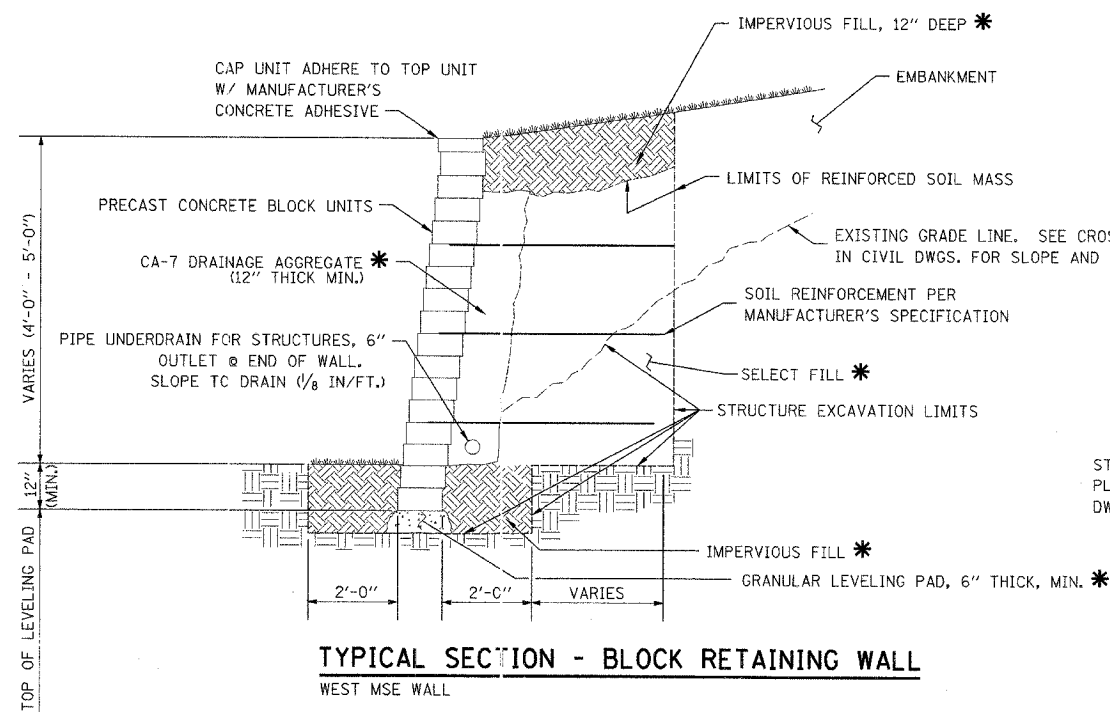
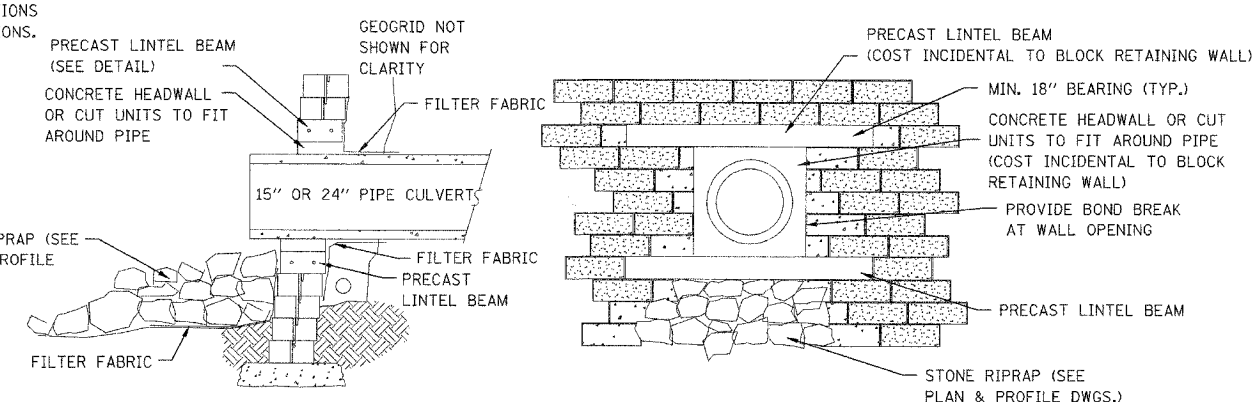


FW RTE.	SECTION	COUNTY	TOTAL SHEETS	SHEET NO.
	94-F3000-06-BT	COOK	105	43
STA.	TO STA.			
FED. ROAD DIST. NO.	ILLINOIS	83709	STPE-0001(479)	

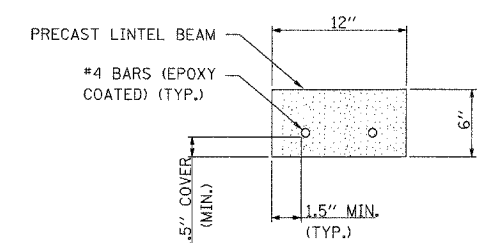


TYPICAL SECTION - BLOCK RETAINING WALL
WEST MSE WALL

* COST INCLUDED WITH COST OF "BLOCK RETAINING WALL"



WALL W/ PIPE PENETRATION
PROFILE



PRECAST LINTEL BEAM DETAIL

- LINTEL NOTES:
1. FINAL BEAM SIZE, REINFORCEMENT, AND CONFIGURATION TO BE DESIGNED BY CONTRACTOR
 2. LINTEL BEAMS SHALL BE PRECAST WITH MINIMUM 7 DAYS CURE
 3. HEIGHT OF BEAM SHALL CORRESPOND TO HEIGHT OF UNIT(S)
 4. PLACEMENT OF LINTEL BEAMS SHALL BE CONSISTANT WITH THE PLACEMENT OF THE OUTFALL PIPE
 5. INSTALL OUTFALL PIPE PRIOR TO CONSTRUCTION OF WALL ABOVE
 6. OUTFALL PIPE TO EXTEND BEYOND BASE COURSE OF WALL NO LESS THAN 6"
 7. GEOTEXTILE FABRIC SHALL BE INSTALLED AROUND PIPE OPENING
 8. LINTEL TO EXTEND MINIMUM 18" EITHER SIDE OF OPENING
 9. COST OF LINTELS IS TO BE INCLUDED IN COST OF BLOCK WALL.

NOTE:
REFER TO CIVIL DRAWINGS FOR LOCATION AND LIMITS OF SHEET PILING WALLS.

ILLINOIS DEPARTMENT OF TRANSPORTATION
DISTRICT NO. 1 SCHAUMBURG

BLOCK RETAINING WALL DETAILS

SCALE NONE
DATE 3/31/06

DRAWN BY ERG
CHECKED BY JD