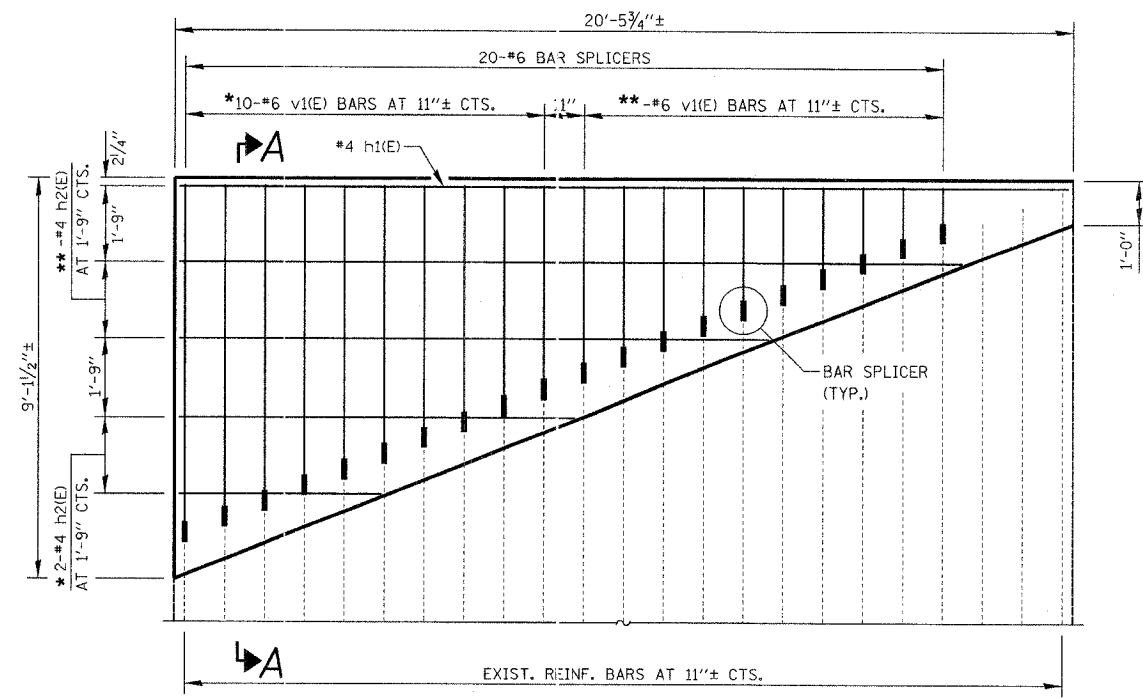
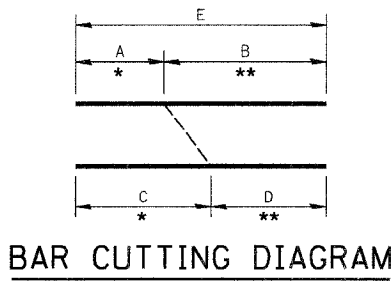


| | | | | |
|---------------------|---------------|--------|----------------|-----------|
| PROJECT | SECTION | COUNTY | TOTAL SHEETS | SHEET NO. |
| 94-F3000-06-BT | COOK | 105 | 44 | |
| STA. 0+00 | TO STA. 46+00 | | | |
| FED. ROAD DIST. NO. | DISTRICT | 83709 | STPE-0001(479) | |

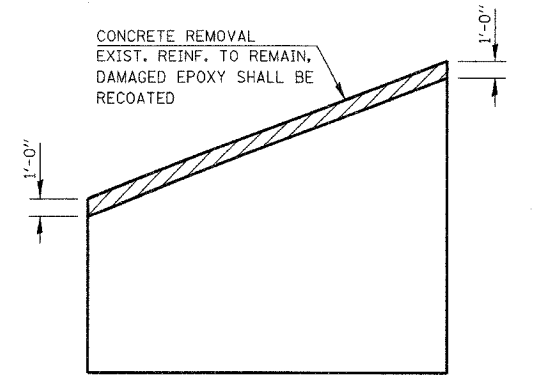


PARTIAL ELEVATION
(SHOWING BARS IN BACK FACE)
(EAST WINGWALL ONLY)

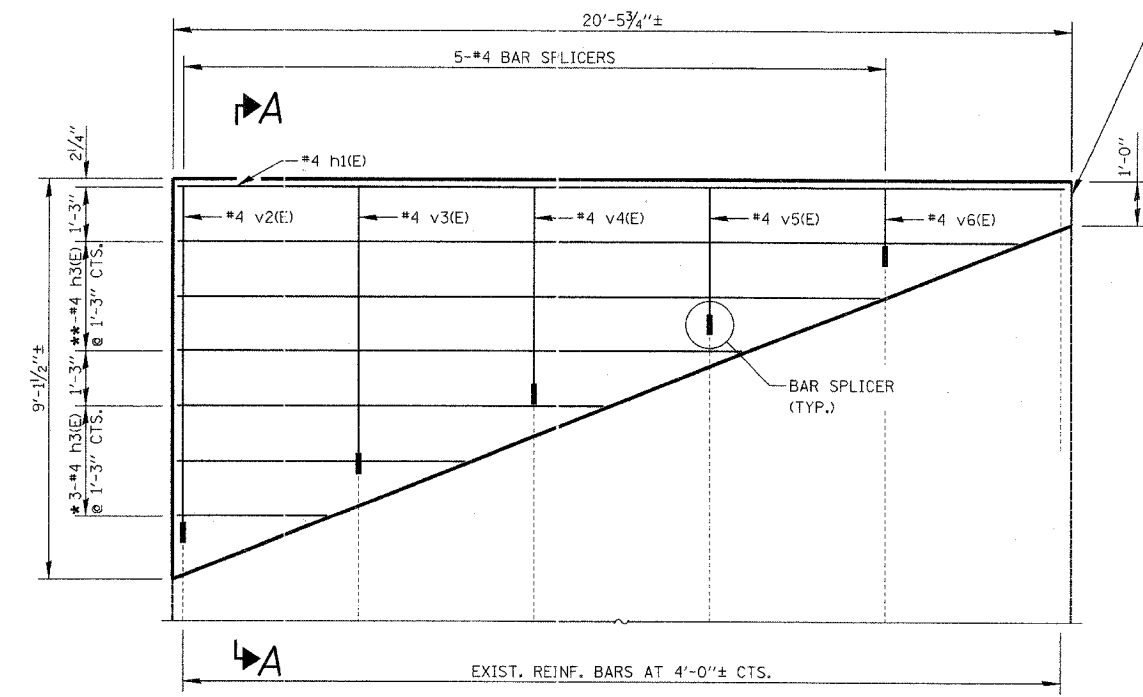


*ORDER BARS FULL LENGTH AND CUT TO FIT SLOPE.
**REMAINDER OF BARS TO BE PLACED AS SHOWN.

| BAR | A | B | C | D | E |
|-------|-------|--------|--------|--------|--------|
| h2(E) | 4'-5" | 17'-9" | 8'-11" | 13'-4" | 22'-3" |
| h3(E) | 3'-3" | 19'-0" | 9'-7" | 12'-8" | 22'-3" |
| v1(E) | 1'-0" | 7'-10" | 4'-3" | 4'-7" | 8'-10" |

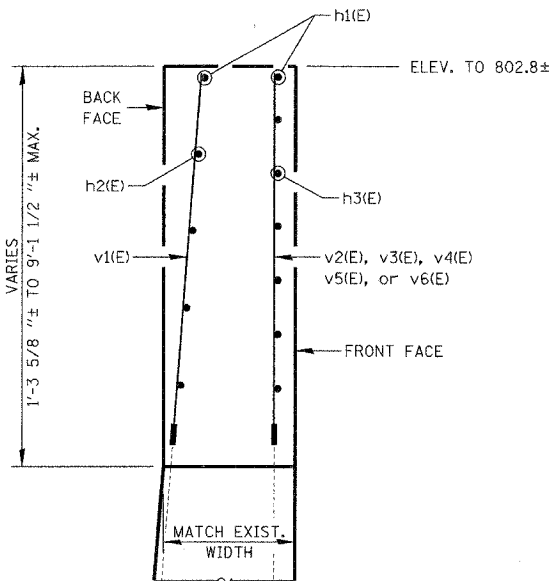


EXISTING WINGWALL ELEVATION
(SHOWING CONCRETE REMOVAL)
(EAST WINGWALL ONLY)



PARTIAL ELEVATION
(SHOWING BARS IN FRONT FACE)
(EAST WINGWALL ONLY)

APPLY PREFORMED JOINT FILLER AT JOINT WITH EXISTING WALL.
COST TO BE INCLUDED WITH CONCRETE STRUCTURES.



SECTION A-A

BILL OF MATERIAL

| BAR | NO. | SIZE | LENGTH | SHAPE |
|----------------------------------|-----|------|---------|-------|
| h1(E) | 2 | #4 | 20'-1" | — |
| h2(E) | 2 | #4 | 22'-3" | — |
| h3(E) | 3 | #4 | 22'-3" | — |
| v1(E) | 10 | #6 | 8'-10" | — |
| v2(E) | 1 | #4 | 7'-10" | — |
| v3(E) | 1 | #4 | 6'-3" | — |
| v4(E) | 1 | #4 | 4'-8" | — |
| v5(E) | 1 | #4 | 3'-1" | — |
| v6(E) | 1 | #4 | 1'-6" | — |
| REINFORCEMENT BARS, EPOXY COATED | | | LB | 260 |
| BAR SPLICERS | | | EACH | 25 |
| CONCRETE REMOVAL | | | CU. YD. | 0.8 |
| CONCRETE STRUCTURES | | | CU. YD. | 4.0 |

ILLINOIS DEPARTMENT OF TRANSPORTATION
DISTRICT NO. 1 SCHAUMBURG

WING WALL EXTENSION DETAILS

SCALE NONE
DATE 3/31/06
DRAWN BY ERG
CHECKED BY JD