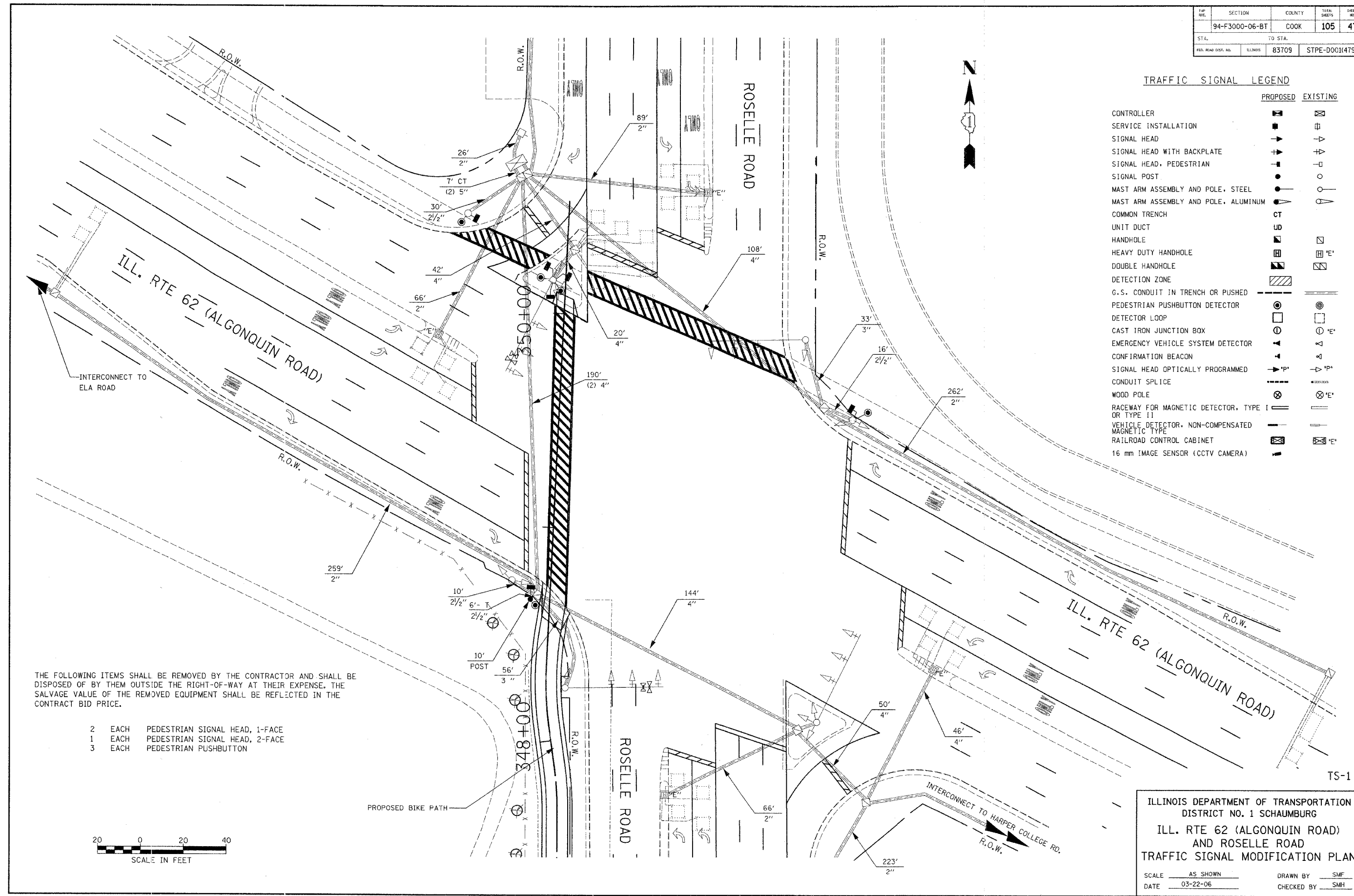


F&P RTE.	SECTION	COUNTY	TOTAL SHEETS	SHEET NO.
94-F3000-06-BT		COOK	105	47
STA.	TO STA.			
FED. ROAD DIST. NO.	ILLINOIS	83709	STPE-DOC1(479)	

**TRAFFIC SIGNAL LEGEND**

	PROPOSED	EXISTING
CONTROLLER		
SERVICE INSTALLATION		
SIGNAL HEAD		
SIGNAL HEAD WITH BACKPLATE		
SIGNAL HEAD, PEDESTRIAN		
SIGNAL POST		
MAST ARM ASSEMBLY AND POLE, STEEL		
MAST ARM ASSEMBLY AND POLE, ALUMINUM		
COMMON TRENCH		
UNIT DUCT		
HANDHOLE		
HEAVY DUTY HANDHOLE		
DOUBLE HANDHOLE		
DETECTION ZONE		
G.S. CONDUIT IN TRENCH OR PUSHED		
PEDESTRIAN PUSHBUTTON DETECTOR		
DETECTOR LOOP		
CAST IRON JUNCTION BOX		
EMERGENCY VEHICLE SYSTEM DETECTOR		
CONFIRMATION BEACON		
SIGNAL HEAD OPTICALLY PROGRAMMED		
CONDUIT SPLICE		
WOOD POLE		
RACEWAY FOR MAGNETIC DETECTOR, TYPE I OR TYPE II		
VEHICLE DETECTOR, NON-COMPENSATED MAGNETIC TYPE		
RAILROAD CONTROL CABINET		
16 mm IMAGE SENSOR (CCTV CAMERA)		



THE FOLLOWING ITEMS SHALL BE REMOVED BY THE CONTRACTOR AND SHALL BE DISPOSED OF BY THEM OUTSIDE THE RIGHT-OF-WAY AT THEIR EXPENSE. THE SALVAGE VALUE OF THE REMOVED EQUIPMENT SHALL BE REFLECTED IN THE CONTRACT BID PRICE.

- 2 EACH PEDESTRIAN SIGNAL HEAD, 1-FACE
- 1 EACH PEDESTRIAN SIGNAL HEAD, 2-FACE
- 3 EACH PEDESTRIAN PUSHBUTTON



ILLINOIS DEPARTMENT OF TRANSPORTATION  
DISTRICT NO. 1 SCHAUMBURG

**ILL. RTE 62 (ALGONQUIN ROAD)  
AND ROSELLE ROAD  
TRAFFIC SIGNAL MODIFICATION PLAN**

SCALE AS SHOWN      DRAWN BY SMF  
DATE 03-22-06      CHECKED BY SMH

TS-1