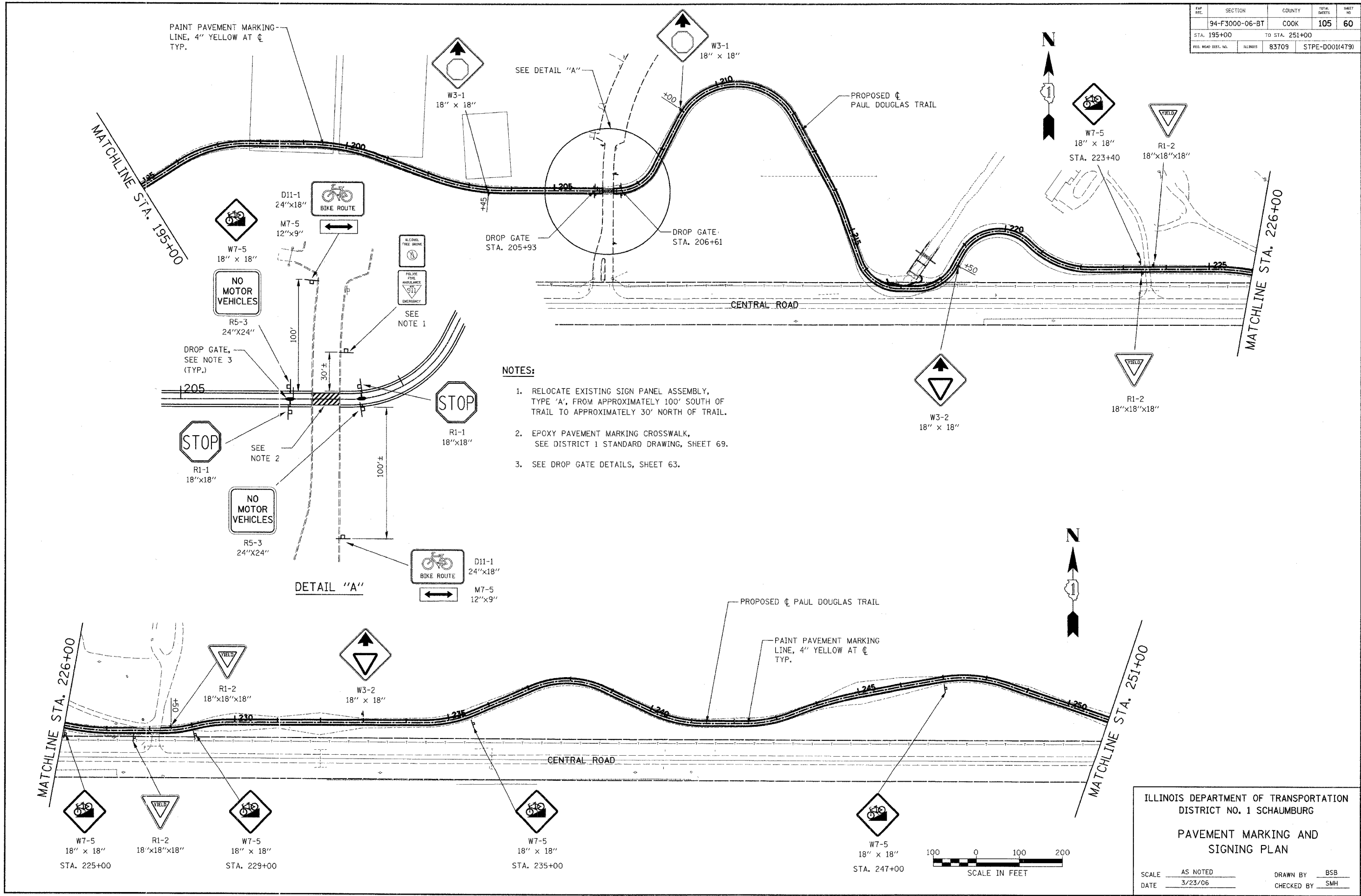


SECTION	COUNTY	TOTAL SHEETS	SHEET NO.
94-F3000-06-BT	COOK	105	60
STA. 195+00		TO STA. 251+00	
ILL. ROAD DIST. NO.	ILLINOIS	83709	STPE-000(479)



- NOTES:**
1. RELOCATE EXISTING SIGN PANEL ASSEMBLY, TYPE 'A', FROM APPROXIMATELY 100' SOUTH OF TRAIL TO APPROXIMATELY 30' NORTH OF TRAIL.
  2. EPOXY PAVEMENT MARKING CROSSWALK, SEE DISTRICT 1 STANDARD DRAWING, SHEET 69.
  3. SEE DROP GATE DETAILS, SHEET 63.

**DETAIL "A"**

ILLINOIS DEPARTMENT OF TRANSPORTATION  
DISTRICT NO. 1 SCHAUMBURG

**PAVEMENT MARKING AND SIGNING PLAN**

SCALE AS NOTED  
DATE 3/23/06

DRAWN BY BSB  
CHECKED BY SMH

