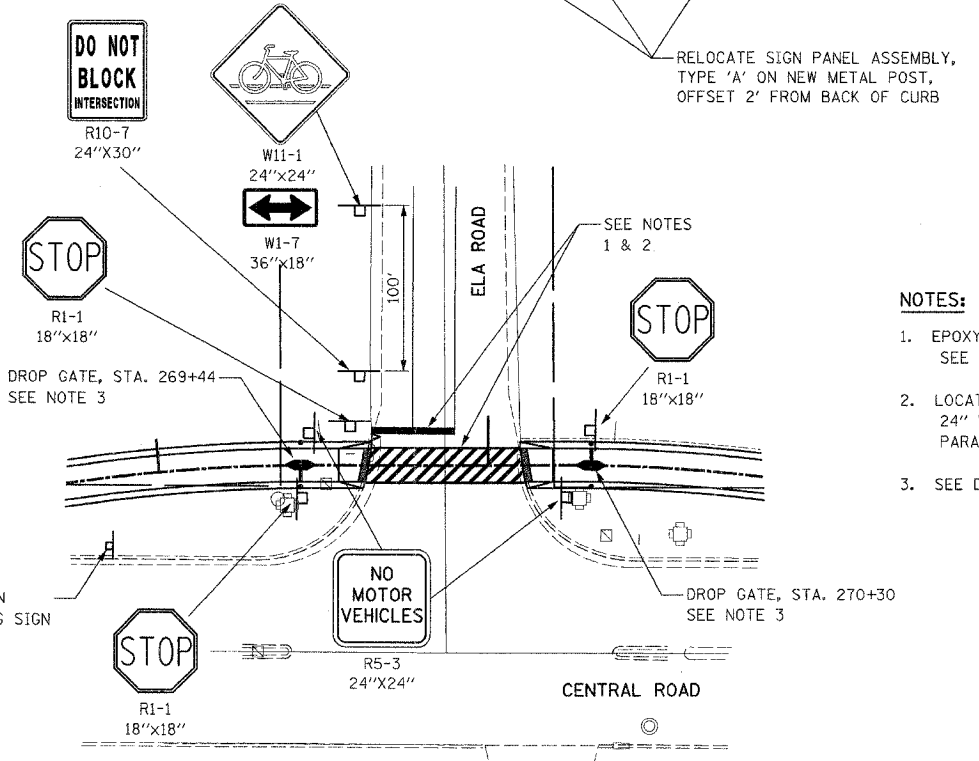
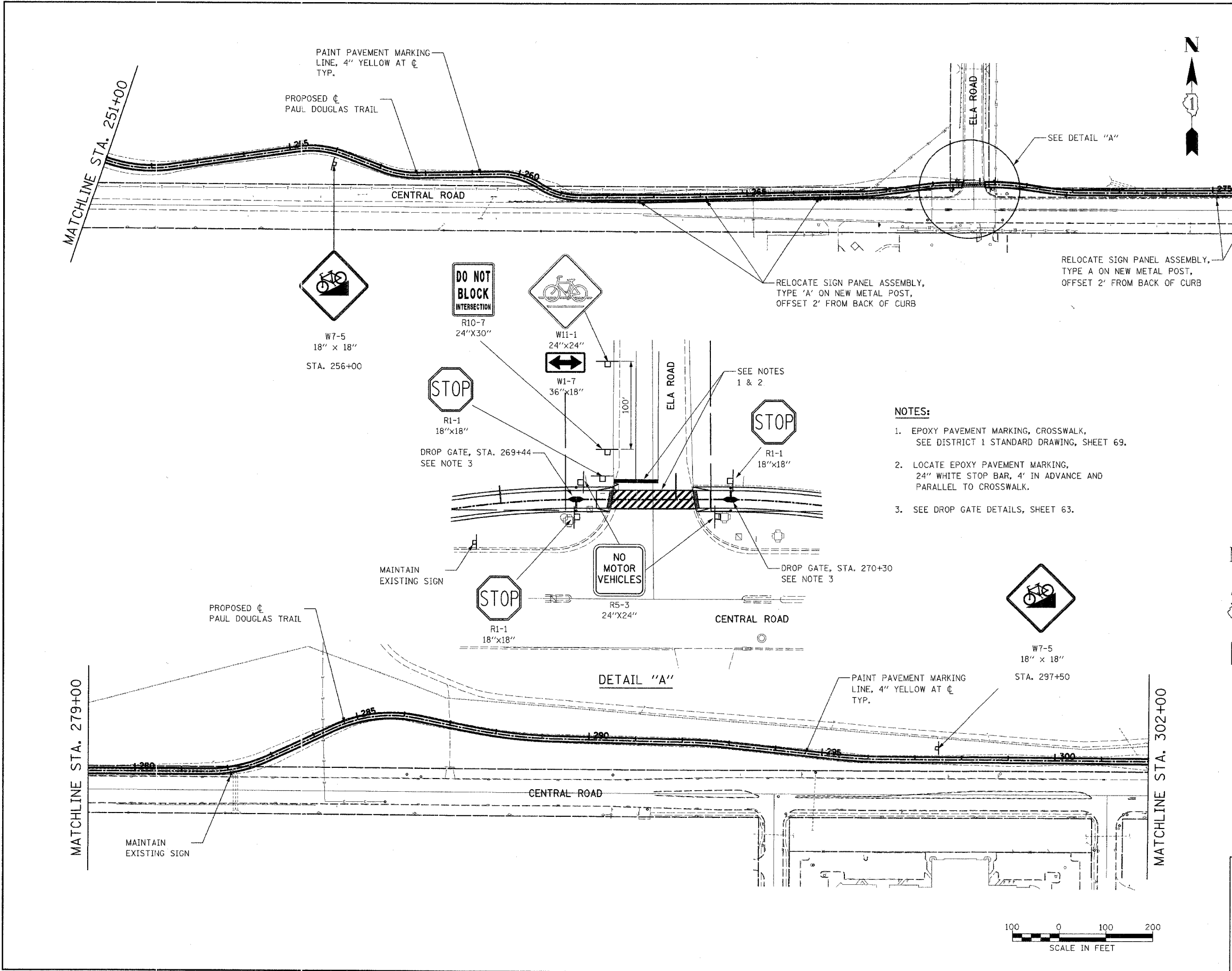
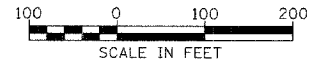


F&P RTL.	SECTION	COUNTY	TOTAL SHEETS	SHEET NO.
	94-F3000-06-BT	COOK	105	61
STA.	TO STA. 302+00			
FED. ROAD DIST. NO.	ILLINOIS	83709	STPE-D001(479)	



- NOTES:**
1. EPOXY PAVEMENT MARKING, CROSSWALK, SEE DISTRICT 1 STANDARD DRAWING, SHEET 69.
 2. LOCATE EPOXY PAVEMENT MARKING, 24" WHITE STOP BAR, 4' IN ADVANCE AND PARALLEL TO CROSSWALK.
 3. SEE DROP GATE DETAILS, SHEET 63.



ILLINOIS DEPARTMENT OF TRANSPORTATION
DISTRICT NO. 1 SCHAUMBURG

**PAVEMENT MARKING AND
SIGNING PLAN**

SCALE AS NOTED
DATE 3/23/06

DRAWN BY BSB
CHECKED BY SMH