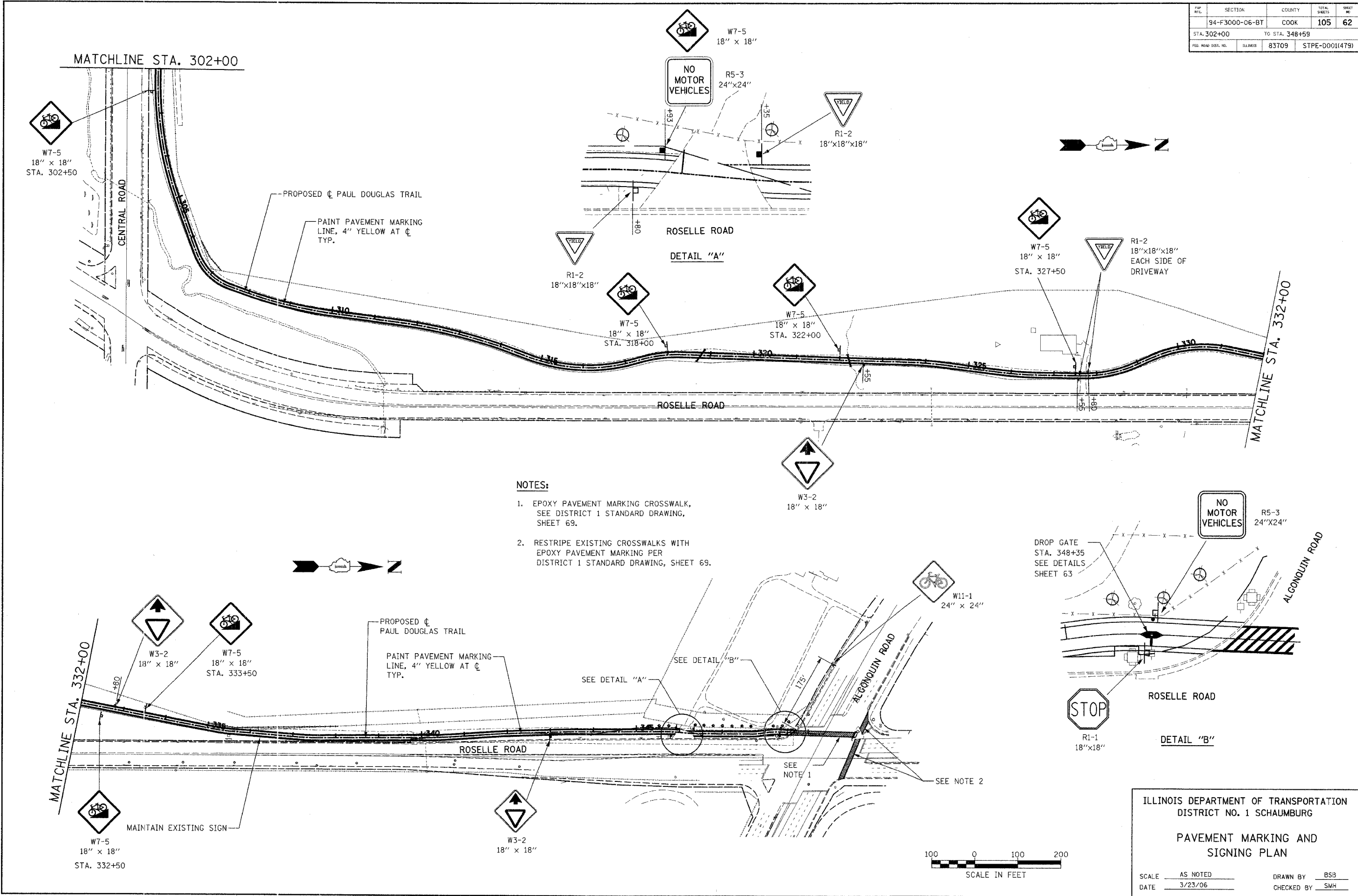
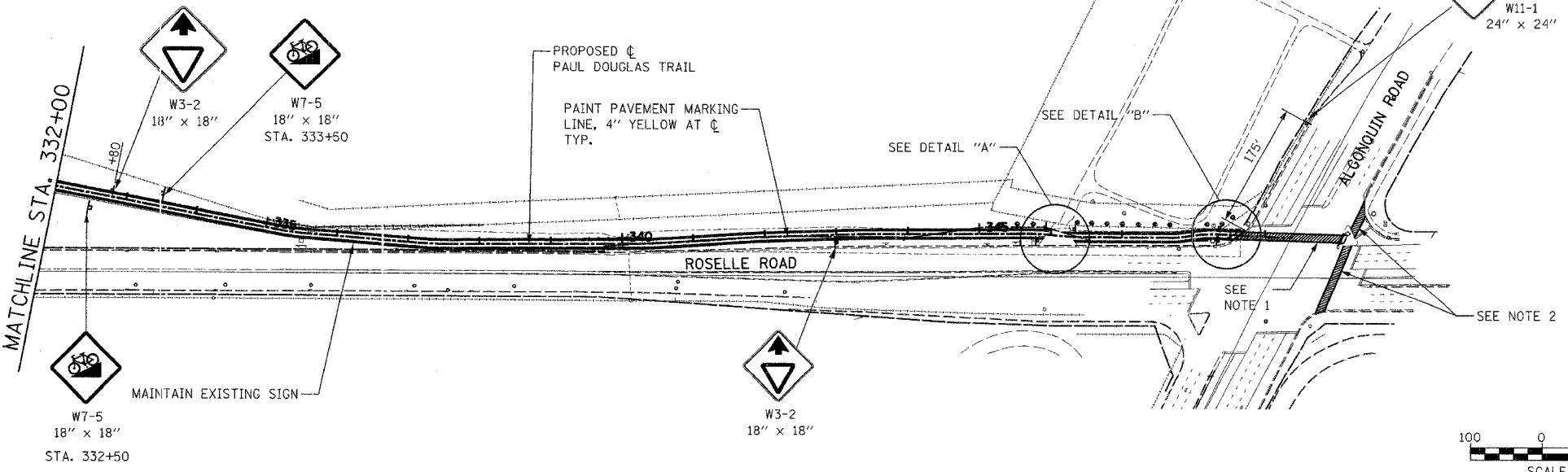
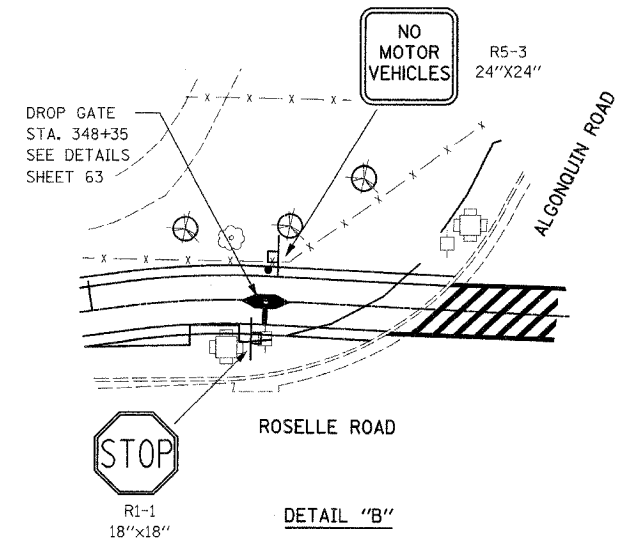


FAP RTL	SECTION	COUNTY	TOTAL SHEETS	SHEET NO.
	94-F3000-06-BT	COOK	105	62
STA. 302+00		TO STA. 348+59		
FED. ROAD DIST. NO.	ILLINOIS	83709	STPE-D001(479)	



- NOTES:**
1. EPOXY PAVEMENT MARKING CROSSWALK, SEE DISTRICT 1 STANDARD DRAWING, SHEET 69.
  2. RESTRIPE EXISTING CROSSWALKS WITH EPOXY PAVEMENT MARKING PER DISTRICT 1 STANDARD DRAWING, SHEET 69.



ILLINOIS DEPARTMENT OF TRANSPORTATION  
DISTRICT NO. 1 SCHAUMBURG

**PAVEMENT MARKING AND SIGNING PLAN**

SCALE AS NOTED  
DATE 3/23/06

DRAWN BY BSB  
CHECKED BY SMH

