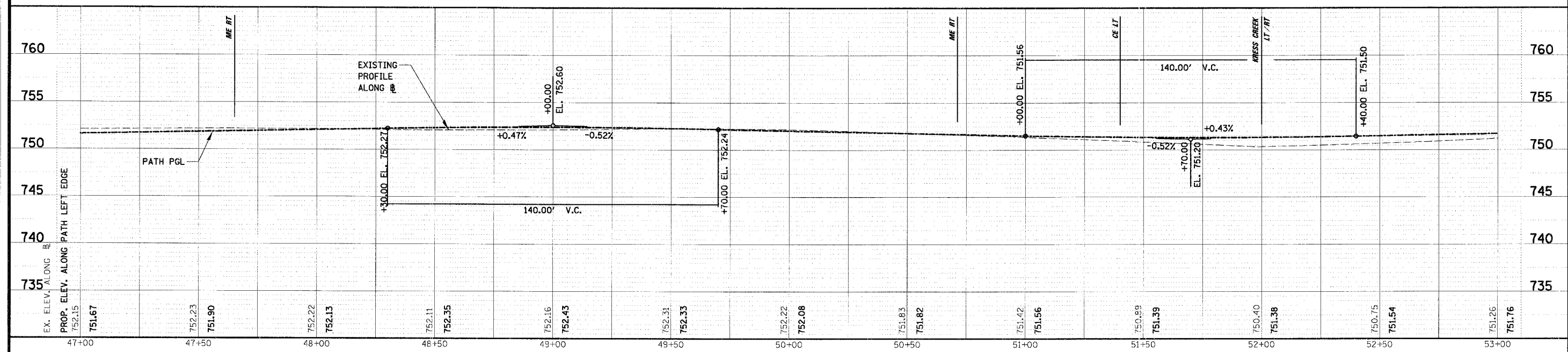


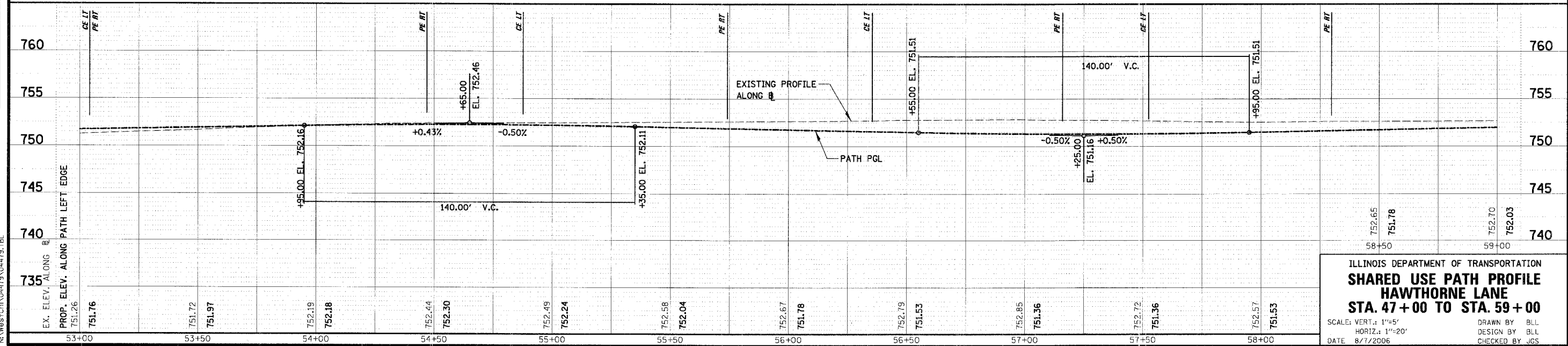
F.A.U. RTE.	SECTION	COUNTY	TOTAL SHEETS	SHEET NO.
1389	99-00062-00-PV	DUPAGE	199	41
CONTRACT NO. 83873				
FED. ROAD DIST. NO.	ILLINOIS	FED. AID PROJECT		

PLAN
 SURVEYED BY DATE
 CHECKED BY
 NOTE BOOK NO.
 ALIGNED BY
 DATE
 FILE NAME



NOTE:
 ALL PATH VPI'S TO HAVE
 5' VERTICAL CURVES, OR AS SHOWN

PROFILE
 SURVEYED BY DATE
 CHECKED BY
 NOTE BOOK NO.
 STRUCTURE NOTATION UPKID



ILLINOIS DEPARTMENT OF TRANSPORTATION
SHARED USE PATH PROFILE
HAWTHORNE LANE
STA. 47+00 TO STA. 59+00
 SCALE: VERT.: 1"=5'
 HORIZ.: 1"=20'
 DATE 8/7/2006
 DRAWN BY BILL
 DESIGN BY BILL
 CHECKED BY JCS

N:\WestChl\04479\04479.tbl