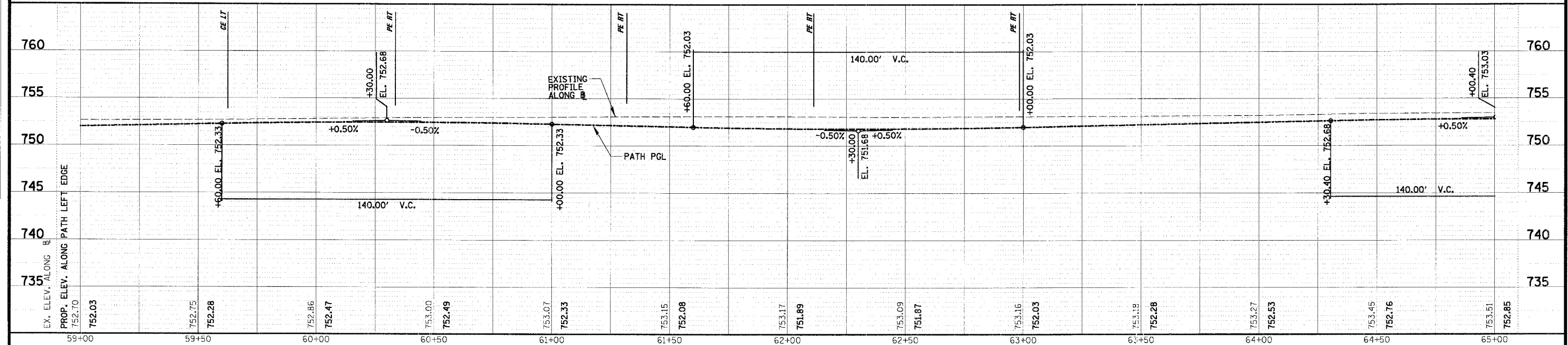


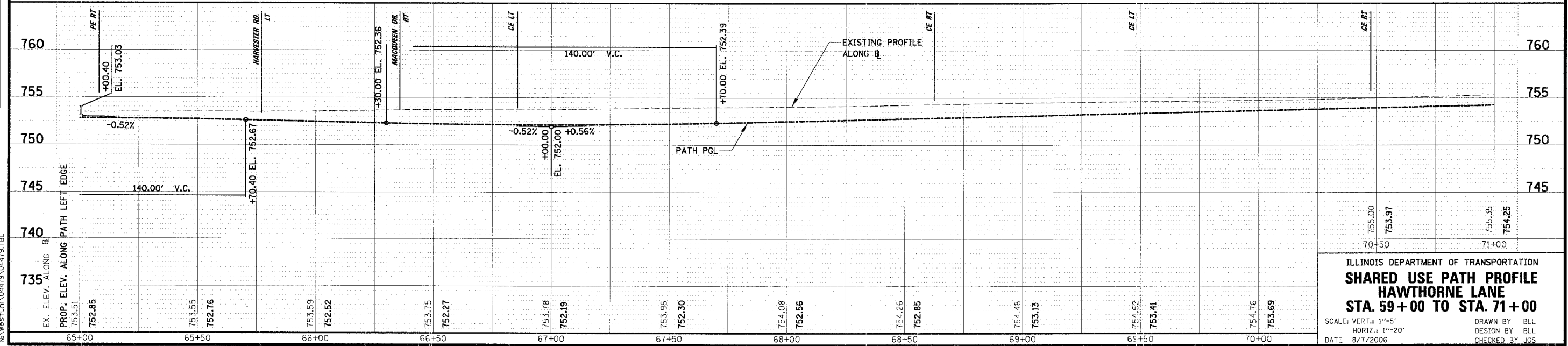
F.A.L. RTE.	SECTION	COUNTY	TOTAL SHEETS	SHEET NO.
1389	99-00062-00-PV	DUPAGE	199	42
CONTRACT NO. 83873				
FED. ROAD DIST. NO.	ILLINOIS	FED. AID PROJECT		

PLAN	DATE
NO.	
BY	
DATE	
PROJECT	
NO.	
BY	
DATE	

PROF.	DATE
NO.	
BY	
DATE	
PROJECT	
NO.	
BY	
DATE	



NOTE:  
ALL PATH VPI'S TO HAVE  
5' VERTICAL CURVES, OR AS SHOWN



ILLINOIS DEPARTMENT OF TRANSPORTATION  
**SHARED USE PATH PROFILE**  
**HAWTHORNE LANE**  
**STA. 59+00 TO STA. 71+00**

SCALE: VERT.: 1"=5'  
 HORIZ.: 1"=20'  
 DATE: 8/7/2006

DRAWN BY: BLL  
 DESIGN BY: BLL  
 CHECKED BY: JGS

N:\WestCh\04479\04479.tbl