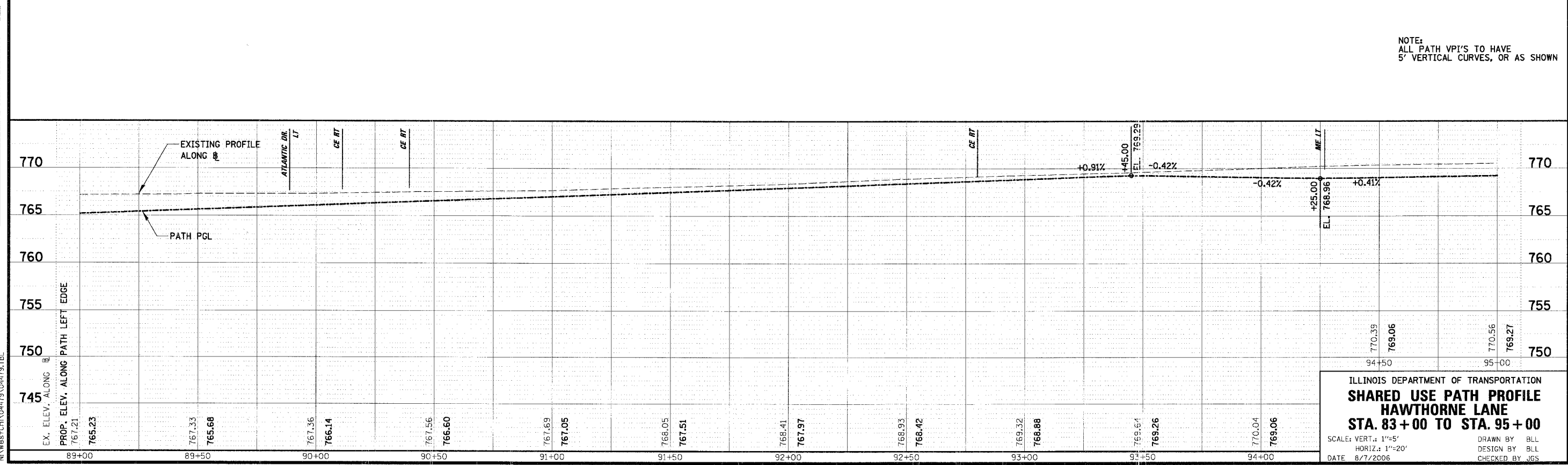
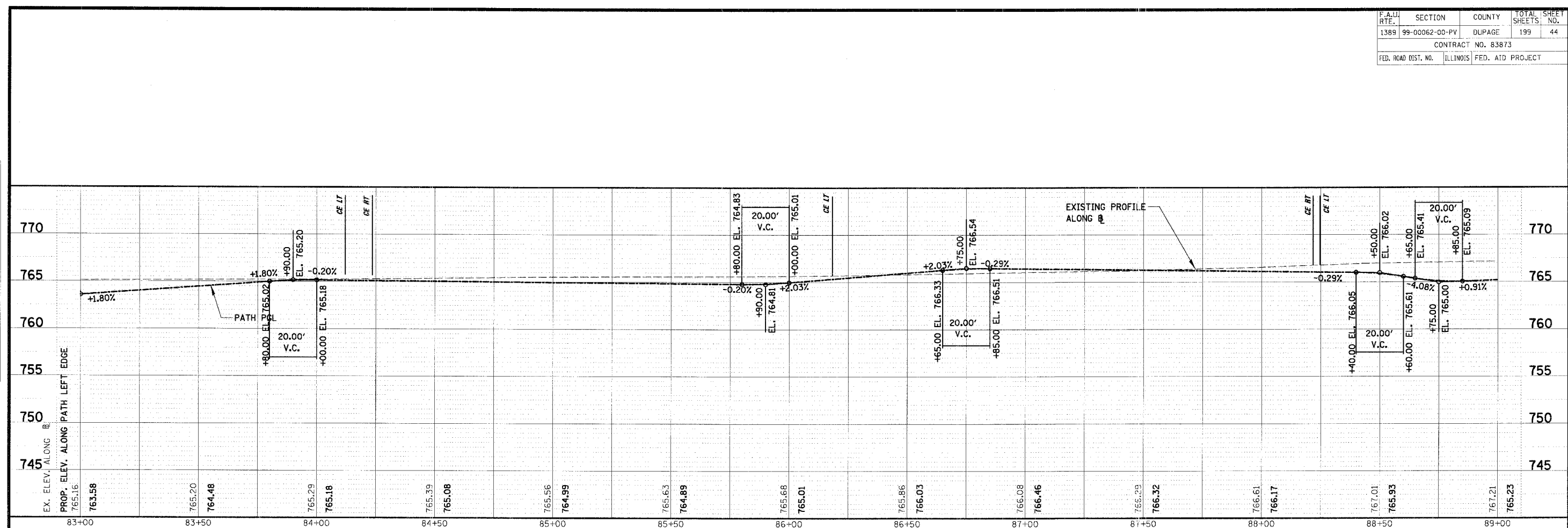


F.A.U. RTE.	SECTION	COUNTY	TOTAL SHEETS	SHEET NO.
1389	99-00062-00-PV	DUPAGE	199	44
CONTRACT NO. 83873				
FED. ROAD DIST. NO.	ILLINOIS	FED. AID PROJECT		

PLAN
 SURVEYED BY: _____ DATE: _____
 NOTE BOOK NO. _____
 ALIGNMENT CHECKED BY: _____
 GRADES CHECKED BY: _____
 STRUCTURE NOTATIONS CHECKED BY: _____

PROFILE
 SURVEYED BY: _____ DATE: _____
 NOTE BOOK NO. _____
 GRADES CHECKED BY: _____
 STRUCTURE NOTATIONS CHECKED BY: _____



NOTE:
 ALL PATH VPI'S TO HAVE
 5' VERTICAL CURVES, OR AS SHOWN

ILLINOIS DEPARTMENT OF TRANSPORTATION
SHARED USE PATH PROFILE
HAWTHORNE LANE
STA. 83 + 00 TO STA. 95 + 00

SCALE: VERT.: 1"=5'
 HORIZ.: 1"=20'
 DATE: 8/7/2006

DRAWN BY: BILL
 DESIGN BY: BILL
 CHECKED BY: JGS

N:\WestCh\04479\04479.TBL