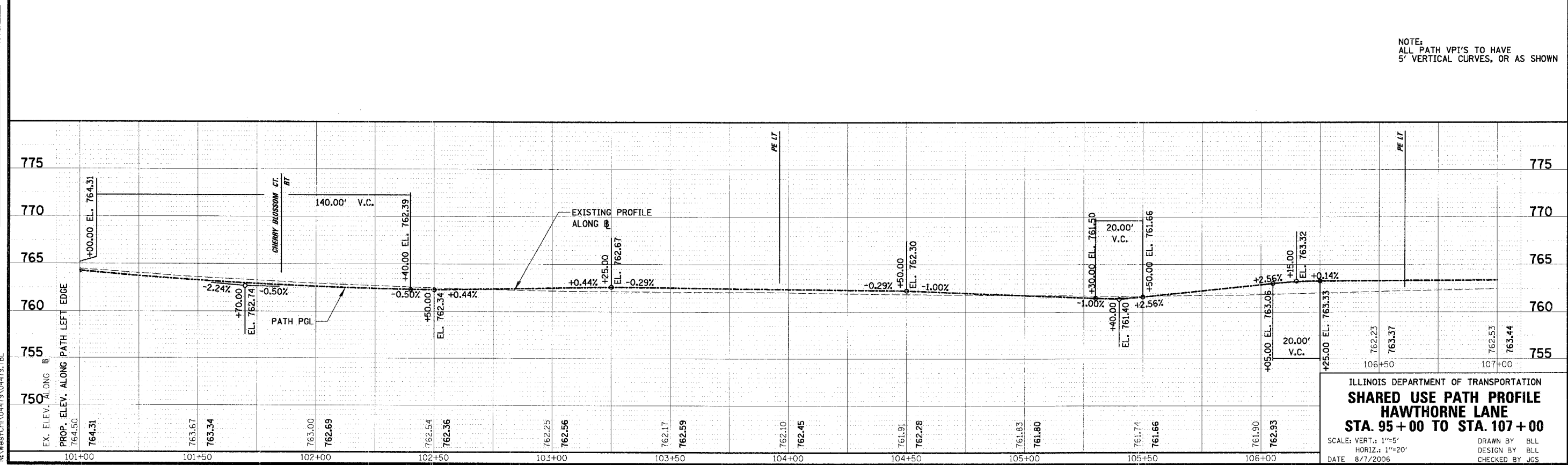
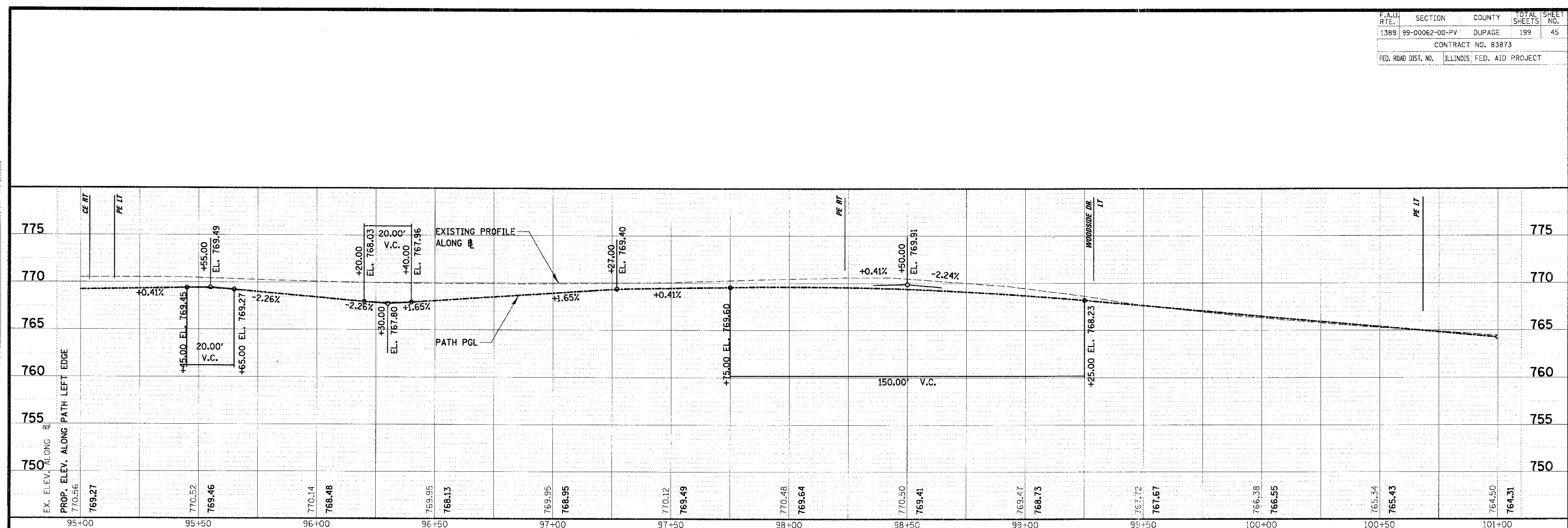


P.A.U. R/E.	SECTION	COUNTY	TOTAL SHEETS	SHEET NO.
1389	99-00062-00-PV	DUPAGE	199	45
CONTRACT NO. 83873				
FED. ROAD DIST. NO. ILLINOIS FED. AID PROJECT				

PLAN SURVEYED BY DATE
 NOTE BOOK ALIGNED CHECKED
 NO. FILE NAME

PROFILE SURVEYED BY DATE
 NOTE BOOK GRADES CHECKED
 NO. PRELIMINARY NOTATIONS CORRD



NOTE:
 ALL PATH VPI'S TO HAVE
 5' VERTICAL CURVES, OR AS SHOWN

ILLINOIS DEPARTMENT OF TRANSPORTATION
SHARED USE PATH PROFILE
HAWTHORNE LANE
STA. 95+00 TO STA. 107+00

SCALE: VERT.: 1"=5'
 HORIZ.: 1"=20'

DATE 8/7/2006

DRAWN BY BLL
 DESIGN BY BLL
 CHECKED BY JCS

N:\westchl\04479\04479.TBI

N:\westchl\04479\clv\04479_13_14.prf