

F.A.U. RTEL.	SECTION	COUNTY	TOTAL SHEETS	SHEET NO.
1389	99-00062-00-PV	DUPAGE	199	50
CONTRACT NO. 83873				
FED. ROAD DIST. NO.	ILLINOIS	FED. AID PROJECT		

**SUGGESTED MAINTENANCE OF TRAFFIC STAGING NOTES**

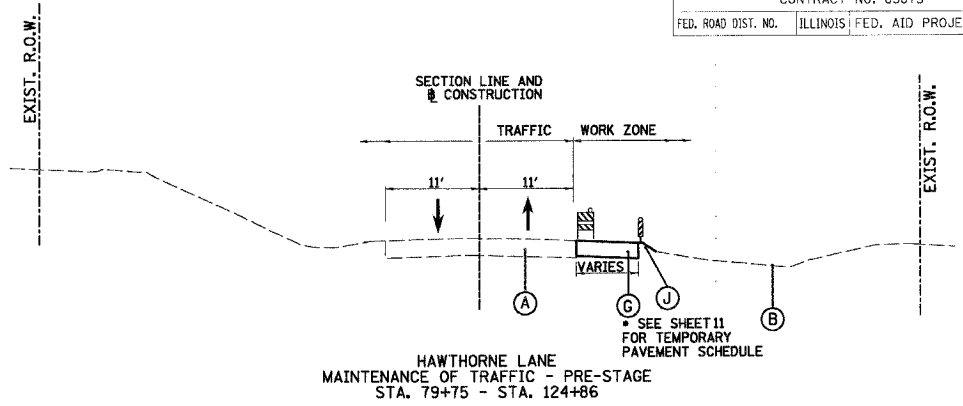
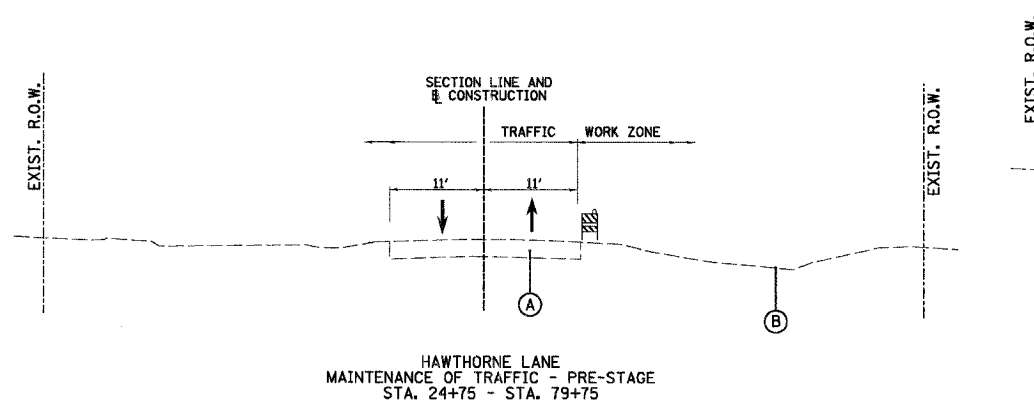
**PRE-STAGE (TREE REMOVAL, WATER MAIN WORK AND TEMPORARY PAVEMENT)**

**MAINTENANCE OF TRAFFIC**

- LANE CLOSURES IN ACCORDANCE WITH PLAN DETAILS AND IDOT STANDARDS 701301, 701501, 701801, AND 702001.

**CONSTRUCTION**

- PLACE EROSION CONTROL ITEMS PER THE STORM WATER POLLUTION PREVENTION PLAN AND AS DIRECTED BY THE ENGINEER.
- COMPLETE THE RELOCATION OF UTILITIES (ELECTRIC, CABLE, GAS, AND TELEPHONE) (BY OTHERS).
- BUILD TEMPORARY PAVEMENT FROM EASTBOUND EDGE OF PAVEMENT TO 19' RT.
- PLACE TEMPORARY PAVEMENT MARKINGS AND TRAFFIC CONTROL.
- INSTALL WATER MAIN AND APPURTENANCES.
- PLACE EROSION CONTROL ITEMS IN NEW DITCHES AND STRUCTURES PER THE STORM WATER POLLUTION PREVENTION PLAN AND AS DIRECTED BY THE ENGINEER.



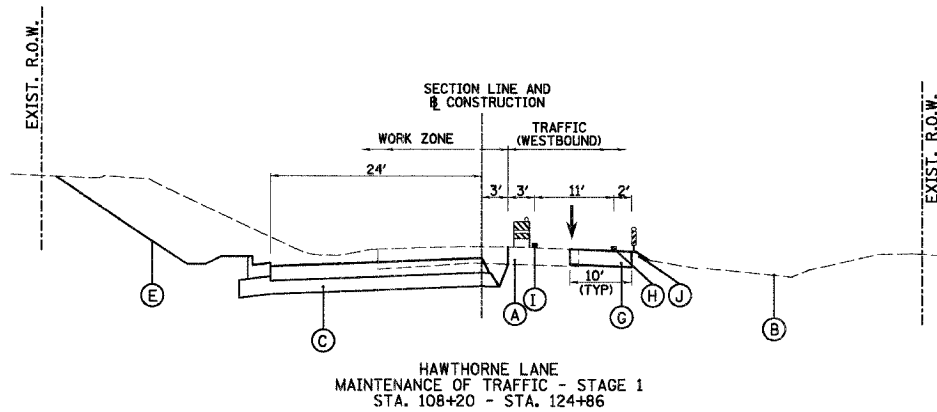
**STAGE 1 (CLOSE AND RECONSTRUCT INTERSECTION OF HAWTHORNE LANE AND POWIS ROAD, BUILD WESTBOUND LANE AND CENTER LANE AND DRAINAGE BETWEEN STA. 108+20 AND 124+86)**

**MAINTENANCE OF TRAFFIC**

- RELOCATE TRAFFIC TO THE LANE SHOWN.
- LANE CLOSURES IN ACCORDANCE WITH PLAN DETAILS AND IDOT STANDARDS 701301, 701501, 701801, 702001, AND 704001.

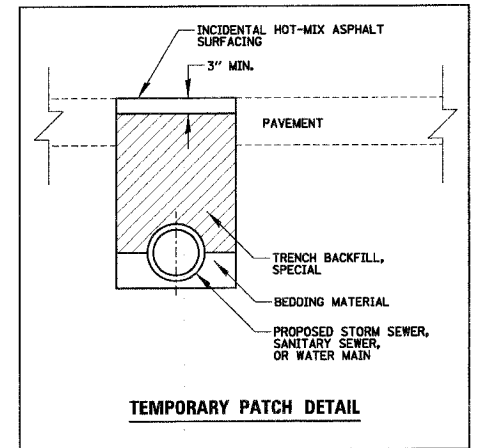
**CONSTRUCTION**

- MAINTAIN EROSION CONTROL ITEMS PER THE STORM WATER POLLUTION PREVENTION PLAN AND AS DIRECTED BY THE ENGINEER.
- SET UP DETOUR ROUTE SIGNAGE FOR THE CLOSING OF HAWTHORNE LANE AND POWIS ROAD REQUIRED FOR RAILROAD UPGRADES AND INTERSECTION RECONSTRUCTION BETWEEN STA. 200+00 AND STA. 208+31 ON POWIS ROAD AND BETWEEN STA. 23+84 AND STA. 37+50 ON HAWTHORNE LANE.
- MAINTAIN EASTBOUND AND WESTBOUND TRAFFIC ON HAWTHORNE LANE BETWEEN STA. 37+50 AND STA. 102+00. MAINTAIN WESTBOUND TRAFFIC BETWEEN STA. 102+00 AND STA. 124+86.
- CONSTRUCT HAWTHORNE LANE AND POWIS ROAD WITHIN THE POWIS/HAWTHORNE CLOSURE INCLUDING ALL CONNECTING DRIVEWAYS, ENTRANCES, DRAINAGE AND LANDSCAPING.
- CONSTRUCT DRAINAGE FOR TEMPORARY STORM WATER OUTLETS AT EX451.
- CONSTRUCT RAILROAD CROSSING SURFACE AND APPURTENANCES (BY OTHERS).
- CONSTRUCT THE WESTBOUND AND CENTER LANE OF HAWTHORNE LANE WITH ALL CONNECTING DRIVEWAYS, ENTRANCES, SIDEWALKS, DRAINAGE AND LANDSCAPING BETWEEN STA. 108+20 AND STA. 124+86.
- CONSTRUCT DRAINAGE FOR STORM WATER OUTLETS AT S1517.
- PLACE EROSION CONTROL ITEMS IN NEW DITCHES AND STRUCTURES PER THE STORM WATER POLLUTION PREVENTION PLAN AND AS DIRECTED BY THE ENGINEER.
- THE HOT-MIX ASPHALT SURFACE COURSE WILL NOT BE PLACED AT THIS TIME.
- PLACE TEMPORARY PAVEMENT MARKINGS AND TRAFFIC CONTROL.
- REMOVE DETOUR ROUTE SIGNAGE FOR THE CLOSING OF HAWTHORNE LANE AND POWIS ROAD REQUIRED FOR RAILROAD UPGRADES AND INTERSECTION RECONSTRUCTION; MAINTAIN NORTHBOUND AND SOUTHBOUND TRAFFIC ON POWIS ROAD FOR THE REMAINING STAGES.



**LEGEND**

- (A) EXISTING ROADWAY
- (B) EXISTING GROUND
- (C) PROPOSED ROADWAY
- (D) PROPOSED ROADWAY (BUILT IN PREVIOUS STAGE)
- (E) PROPOSED GROUND
- (F) PROPOSED SHARED USE PATH
- (G) TEMPORARY PAVEMENT.
- (H) TEMPORARY PAVEMENT MARKING - LINE, YELLOW
- (I) TEMPORARY PAVEMENT MARKING - LINE, WHITE
- (J) TEMPORARY DRAINAGE AND EROSION CONTROL
- [Symbol] TYPE II BARRICADE OR DRUM WITH LIGHT
- [Symbol] VERTICAL PANEL WITH LIGHT



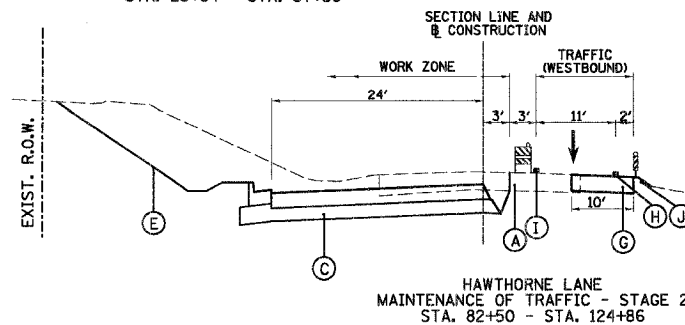
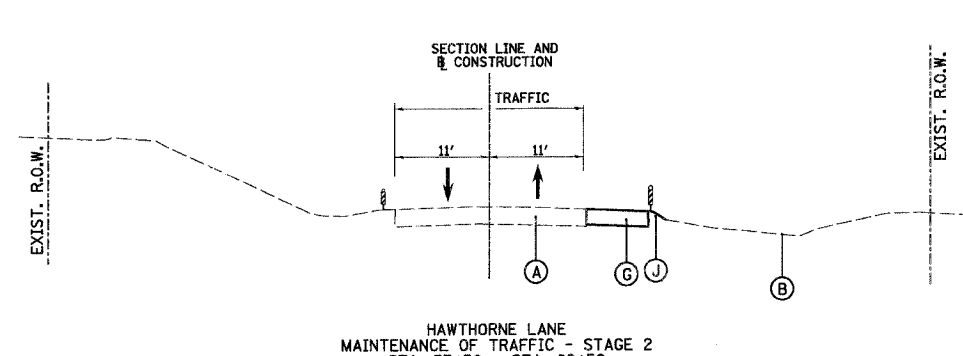
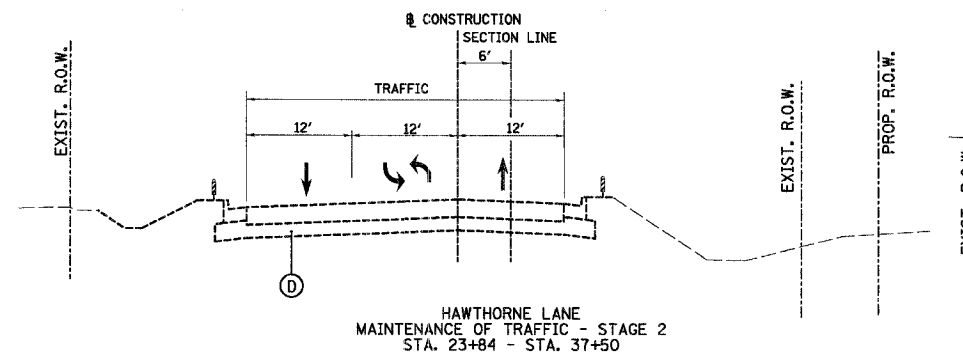
**STAGE 2 (BUILD WESTBOUND LANE, CENTER LANE AND DRAINAGE BETWEEN STA. 87+84 AND STA. 108+20)**

**MAINTENANCE OF TRAFFIC**

- RELOCATE TRAFFIC TO THE LANE SHOWN.
- LANE CLOSURES IN ACCORDANCE WITH PLAN DETAILS AND IDOT STANDARDS 701301, 701501, 701502, 702001 AND 704001.

**CONSTRUCTION**

- MAINTAIN EROSION CONTROL ITEMS PER THE STORM WATER POLLUTION PREVENTION PLAN AND AS DIRECTED BY THE ENGINEER.
- MAINTAIN EASTBOUND AND WESTBOUND TRAFFIC, INCLUDING TURN LANES, ON HAWTHORNE LANE BETWEEN STA. 23+84 AND STA. 82+50, AND BETWEEN STA. 110+50 AND STA. 124+86. MAINTAIN WESTBOUND TRAFFIC ON HAWTHORNE LANE BETWEEN STA. 82+50 AND STA. 110+50.
- NORTHBOUND/SOUTHBOUND ATLANTIC DRIVE WILL BE CLOSED TO THROUGH TRAFFIC DURING THIS STAGE ONLY.
- CONSTRUCT THE NORTH SIDE OF HAWTHORNE LANE WITH ALL CONNECTING DRIVEWAYS, ENTRANCES, SIDEWALKS, DRAINAGE AND LANDSCAPING BETWEEN STA. 87+84 AND STA. 108+20.
- CONSTRUCT DRAINAGE FOR STORM WATER OUTLETS AT S1124, S1418 AND S1517.
- PLACE EROSION CONTROL ITEMS IN NEW DITCHES AND STRUCTURES PER THE STORM WATER POLLUTION PREVENTION PLAN AND AS DIRECTED BY THE ENGINEER.
- THE HOT-MIX ASPHALT SURFACE COURSE WILL NOT BE PLACED AT THIS TIME.
- PLACE TEMPORARY PAVEMENT MARKINGS AND TRAFFIC CONTROL.



REVISIONS	
NAME	DATE

ILLINOIS DEPARTMENT OF TRANSPORTATION  
**HAWTHORNE LANE**  
**SUGGESTED MAINTENANCE OF TRAFFIC - TYPICAL SECTIONS**  
SCALE: NONE  
DATE: 12/7/2006  
DRAWN BY: PMM  
DESIGN BY: BLL  
CHECKED BY: JGS

N:\WestChl\04479\04479.tbl