

**STAGE 3 (CLOSE AND RECONSTRUCT HAWTHORNE LANE AND RAILROAD CROSSINGS BETWEEN STA. 69+87 AND STA. 87+84, KRESS CREEK BOX CULVERT)**

**MAINTENANCE OF TRAFFIC**

- RELOCATE TRAFFIC TO THE LANE SHOWN.
- LANE CLOSURES IN ACCORDANCE WITH PLAN DETAILS AND IDOT STANDARDS 701301, 701501, 702001 AND 704001.

**CONSTRUCTION**

- MAINTAIN EROSION CONTROL ITEMS PER THE STORM WATER POLLUTION PREVENTION PLAN AND AS DIRECTED BY THE ENGINEER.
- MAINTAIN EASTBOUND AND WESTBOUND TRAFFIC, INCLUDING TURN LANES, ON HAWTHORNE LANE BETWEEN STA. 23+84 AND STA. 69+27. MAINTAIN WESTBOUND TRAFFIC ON HAWTHORNE LANE BETWEEN STA. 88+00 AND STA. 124+86. NORTHBOUND/SOUTHBOUND CAROLINA DRIVE AND NORTHBOUND/SOUTHBOUND PILSEN ROAD WILL BE CLOSED TO THROUGH TRAFFIC DURING THIS STAGE ONLY.
- CONSTRUCT HAWTHORNE LANE AND PILSEN ROAD WITHIN THE HAWTHORNE CLOSURE INCLUDING ALL CONNECTING DRIVEWAYS, ENTRANCES, MEDIANS, SHARED USE PATH, DRAINAGE AND LANDSCAPING.
- CONSTRUCT DRAINAGE FOR TEMPORARY STORM WATER OUTLETS AT EX852.
- CONSTRUCT THE TRIPLE BOX CULVERT AT KRESS CREEK, THE PROPOSED 42" STORM SEWER SYSTEM, AND PROPOSED STORM SEWER SYSTEM AT STA. 51+76 AND STA. 52+51.
- CONSTRUCT RAILROAD CROSSING SURFACE, GATES, FLASHERS AND APPURTENANCES (BY OTHERS).
- PLACE EROSION CONTROL ITEMS IN NEW DITCHES AND STRUCTURES PER THE STORM WATER POLLUTION PREVENTION PLAN AND AS DIRECTED BY THE ENGINEER.
- PLACE TEMPORARY PAVEMENT MARKINGS AND TRAFFIC CONTROL.

**GENERAL**

- PRIOR TO PRE-STAGE CONSTRUCTION, THE CONTRACTOR SHALL COORDINATE WITH THE RAILROADS AND SCHOOLS FOR START DATES OF STAGE III. STAGE ORDER MAY BE REVISED AS APPROVED BY THE ENGINEER TO FACILITATE RAILROAD RECONSTRUCTION AND TO MINIMIZE DURATION OF FULL ROADWAY CLOSURES.
- DRIVEWAY ACCESS SHALL BE MAINTAINED AT ALL TIMES THROUGH THE USE OF PLACED STONE (AGGREGATE SURFACE COURSE TYPE B). DRIVEWAYS NOT SHOWN TO BE CLOSED SHALL BE CONSTRUCTED IN STAGES, ONE HALF AT A TIME. THE CONTRACTOR WILL COORDINATE ANY CLOSURE OF DRIVEWAYS WITH ENGINEER AND BUSINESS THAT USES DRIVEWAY TO BE CLOSED FOR RECONSTRUCTION.
- THE CONTRACTOR SHALL NOTIFY THE ENGINEER TEN (10) DAYS PRIOR TO THE ESTIMATED DATE THAT THE ROADWAY WILL BE READY FOR THE APPLICATION OF PERMANENT PAVEMENT MARKING. IT SHALL BE THE CONTRACTOR'S RESPONSIBILITY TO HAVE THE ROADWAY CLEANED OF ANY DIRT, GRAVEL, OIL, ETC. ON THE DAY PAVEMENT MARKINGS ARE APPLIED.
- THE CONTRACTOR SHALL NOTIFY THE ENGINEER TEN (10) DAYS PRIOR TO BEGINNING EXCAVATION IN STORM WATER DETENTION AREAS AND PRIOR TO KRESS CREEK WORK. WORK SHALL CONFORM TO PERMITS.
- APPROXIMATELY 45 DAYS PRIOR TO ANY CRANE OPERATIONS, THE CONTRACTOR SHALL OBTAIN ALL PERMITS AS NEEDED FROM THE FAA (FORM 7460). THIS WORK WILL BE INCIDENTAL TO THE CONTRACT.

- PRIOR TO AND SUBSEQUENT TO THE OPERATION OF THE DETOUR ROUTE, ALL STREETS SHALL BE OPEN FOR ALL TRAFFIC AT ALL TIMES, WITH THE FOLLOWING EXCEPTION: ANY SHORT-TERM ACTIVITY THAT REQUIRES ENCROACHMENT ON THE LANES OPEN FOR TRAFFIC SHALL BE RESTRICTED TO WITHIN THE HOURS FROM 9:00 A.M. TO 3:00 P.M. LANE CLOSURES SHALL BE IN ACCORDANCE WITH THE APPLICABLE ILLINOIS DEPARTMENT OF TRANSPORTATION TRAFFIC CONTROL STANDARDS.
- ALL LOADED CONSTRUCTION VEHICLES MUST ENTER AND LEAVE JOBSITE FROM KRESS ROAD, POWIS ROAD OR ATLANTIC DRIVE.
- ONLY WORK PERTAINING TO THE ITEMS DESCRIBED IN EACH STAGE WILL BE WORKED ON DURING EACH RESPECTIVE STAGE. ALL WORK PERTAINING TO SUBSEQUENT STAGES WILL BE STARTED ONLY AT THE COMPLETION OF THE CURRENT STAGE, AS DETERMINED BY THE ENGINEER.

- A TEMPORARY PATCH SHALL BE PLACED OVER THE TOP OF STORM SEWER, SANITARY SEWER AND WATER MAIN TRENCHES AT THE END OF EACH DAY IN ACCORDANCE WITH THE TEMPORARY PATCH DETAIL. REMOVAL OF THE TEMPORARY PATCH WILL BE INCIDENTAL TO EARTH EXCAVATION.

- THE CONTRACTOR SHALL PLACE TEMPORARY HOT-MIX ASPHALT RAMPS BETWEEN THE EXISTING AND PROPOSED PAVEMENT AS REQUIRED TO MAINTAIN TRAFFIC PATTERNS. THIS WORK WILL BE INCIDENTAL TO TRAFFIC CONTROL AND PROTECTION.

- TYPE II BARRIADCE AND VERTICAL PANEL MINIMUM SPACING: 50' C-C ON TANGENTS, 25' C-C ON TAPERS, 12.5' C-C AROUND CORNERS

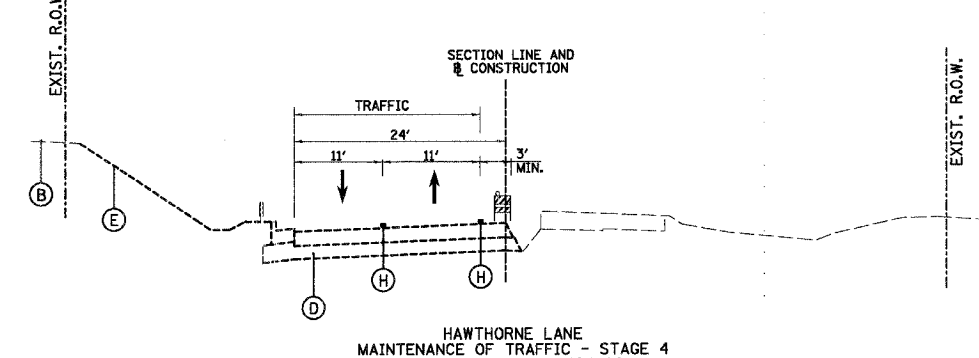
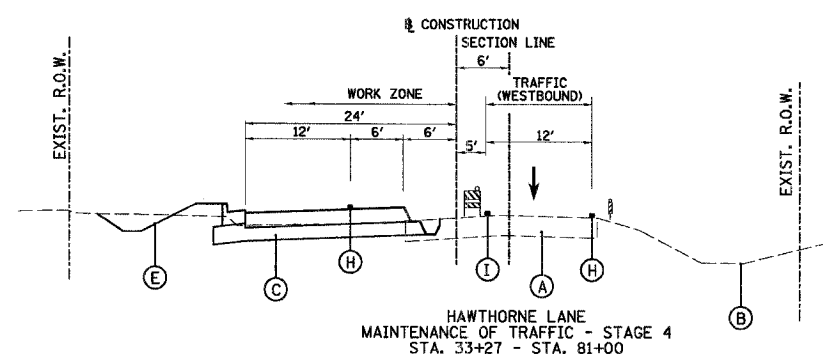
**STAGE 4 (BUILD WESTBOUND LANES, AND DRAINAGE BETWEEN STA. 37+50 AND 69+87)**

**MAINTENANCE OF TRAFFIC**

- RELOCATE TRAFFIC TO THE LANE SHOWN.
- LANE CLOSURES IN ACCORDANCE WITH PLAN DETAILS AND IDOT STANDARDS 701301, 702001 AND 704001.

**CONSTRUCTION**

- MAINTAIN EROSION CONTROL ITEMS PER THE STORM WATER POLLUTION PREVENTION PLAN AND AS DIRECTED BY THE ENGINEER.
- MAINTAIN EASTBOUND AND WESTBOUND TRAFFIC, INCLUDING TURN LANES, ON HAWTHORNE LANE BETWEEN STA. 23+84 AND STA. 33+27 AND BETWEEN STA. 80+00 AND STA. 124+86. LEFT TURNS ONTO PILSEN ROAD WILL BE PROHIBITED.
- MAINTAIN WESTBOUND TRAFFIC ON HAWTHORNE LANE BETWEEN STA. 33+27 AND STA. 75+00.
- CONSTRUCT THE NORTH SIDE OF HAWTHORNE LANE WITH ALL CONNECTING DRIVEWAYS, ENTRANCES, SIDEWALKS, DRAINAGE AND LANDSCAPING BETWEEN STA. 37+50 AND STA. 69+86.
- CONSTRUCT DRAINAGE FOR STORM WATER OUTLETS AT SS12, REMOVE TEMPORARY STORM WATER OUTLET AT EX451. CONSTRUCT DRAINAGE FOR STORM WATER OUTLETS AT EX525.
- REMOVE TEMPORARY STORM WATER OUTLET AT EX852.
- PLACE EROSION CONTROL ITEMS IN NEW DITCHES AND STRUCTURES PER THE STORM WATER POLLUTION PREVENTION PLAN AND AS DIRECTED BY THE ENGINEER.
- THE HOT-MIX ASPHALT SURFACE COURSE WILL NOT BE PLACED AT THIS TIME.
- PLACE TEMPORARY PAVEMENT MARKINGS AND TRAFFIC CONTROL.



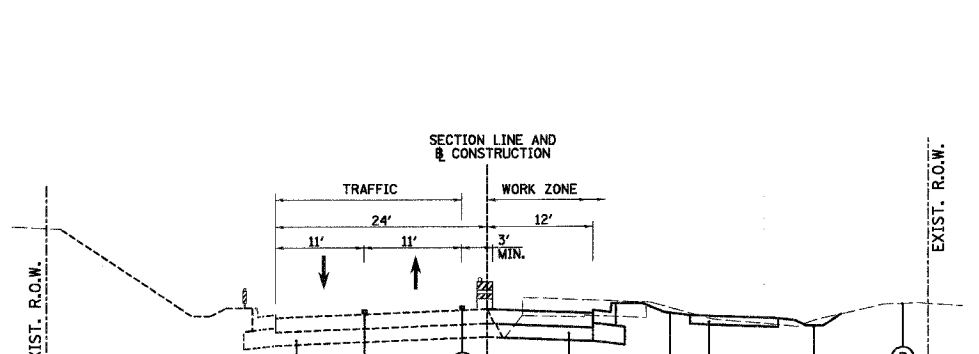
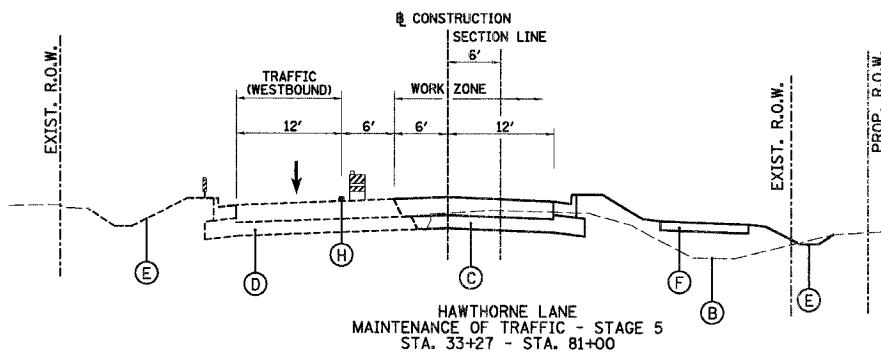
**STAGE 5 (BUILD EASTBOUND LANE AND DRAINAGE BETWEEN STA. 37+50 AND STA. 71+00, AND BETWEEN STA. 85+18, AND STA. 124+86)**

**MAINTENANCE OF TRAFFIC**

- RELOCATE TRAFFIC TO THE LANE SHOWN.
- LANE CLOSURES IN ACCORDANCE WITH PLAN DETAILS AND IDOT STANDARDS 701301, 701502 AND 702001.

**CONSTRUCTION**

- MAINTAIN EROSION CONTROL ITEMS PER THE STORM WATER POLLUTION PREVENTION PLAN AND AS DIRECTED BY THE ENGINEER.
- MAINTAIN EASTBOUND AND WESTBOUND TRAFFIC ON HAWTHORNE LANE BETWEEN STA. 23+84 AND STA. 33+27 AND BETWEEN STA. 81+00 AND STA. 124+86.
- MAINTAIN WESTBOUND TRAFFIC ON HAWTHORNE LANE BETWEEN STA. 33+27 AND STA. 81+00.
- CONSTRUCT THE SOUTH SIDE OF HAWTHORNE LANE WITH ALL CONNECTING DRIVEWAYS, ENTRANCES, SHARED USE PATH, LANDSCAPING, DRAINAGE, LIGHTING AND SANITARY SEWER BETWEEN STA. 37+50 AND STA. 71+00, AND BETWEEN STA. 85+18, AND STA. 124+86.
- COMPLETE THE CONSTRUCTION OF PILSEN ROAD.
- PLACE EROSION CONTROL ITEMS IN NEW DITCHES AND STRUCTURES PER THE STORM WATER POLLUTION PREVENTION PLAN AND AS DIRECTED BY THE ENGINEER.
- THE HOT-MIX ASPHALT SURFACE COURSE WILL NOT BE PLACED AT THIS TIME.
- PLACE TEMPORARY PAVEMENT MARKINGS AND TRAFFIC CONTROL.



**STAGE 6 (LANDSCAPING, SHARED USE PATH, AND FINAL PAVEMENT MARKINGS)**

**MAINTENANCE OF TRAFFIC**

- RELOCATE TRAFFIC TO FINAL LANE CONFIGURATION.
- LANE CLOSURES IN ACCORDANCE WITH PLAN DETAILS AND IDOT STANDARDS 701301, 701502, 701801, AND 702001.

**CONSTRUCTION**

- MAINTAIN EROSION CONTROL ITEMS PER THE STORM WATER POLLUTION PREVENTION PLAN AND AS DIRECTED BY THE ENGINEER.
- COMPLETE CONSTRUCTION OF SHARED USE PATH.
- COMPLETE ALL LANDSCAPING.
- PLACE HOT-MIX ASPHALT SURFACE COURSE.
- PLACE FINAL PAVEMENT MARKINGS FOR ROADWAY AND SHARED USE PATH.
- UPON APPROVAL FROM THE ENGINEER, REMOVE ALL TEMPORARY EROSION CONTROL ITEMS.

**LEGEND**

- (A) EXISTING ROADWAY
- (B) EXISTING GROUND
- (C) PROPOSED ROADWAY
- (D) PROPOSED ROADWAY (BUILT IN PREVIOUS STAGE)
- (E) PROPOSED GROUND
- (F) PROPOSED SHARED USE PATH
- (G) TEMPORARY PAVEMENT
- (H) TEMPORARY PAVEMENT MARKING - LINE, YELLOW
- (I) TEMPORARY PAVEMENT MARKING - LINE, WHITE
- (J) TEMPORARY DRAINAGE AND EROSION CONTROL
- (K) TYPE II BARRIADCE OR DRUM WITH LIGHT
- (L) VERTICAL PANEL WITH LIGHT

REVISIONS	
NAME	DATE

ILLINOIS DEPARTMENT OF TRANSPORTATION  
**HAWTHORNE LANE  
SUGGESTED MAINTENANCE OF  
TRAFFIC - TYPICAL SECTIONS**

SCALE: NONE  
DATE: 12/7/2006  
DRAWN BY: PWM  
DESIGN BY: BLL  
CHECKED BY: JGS

N:\westch\04479\04479.tbl