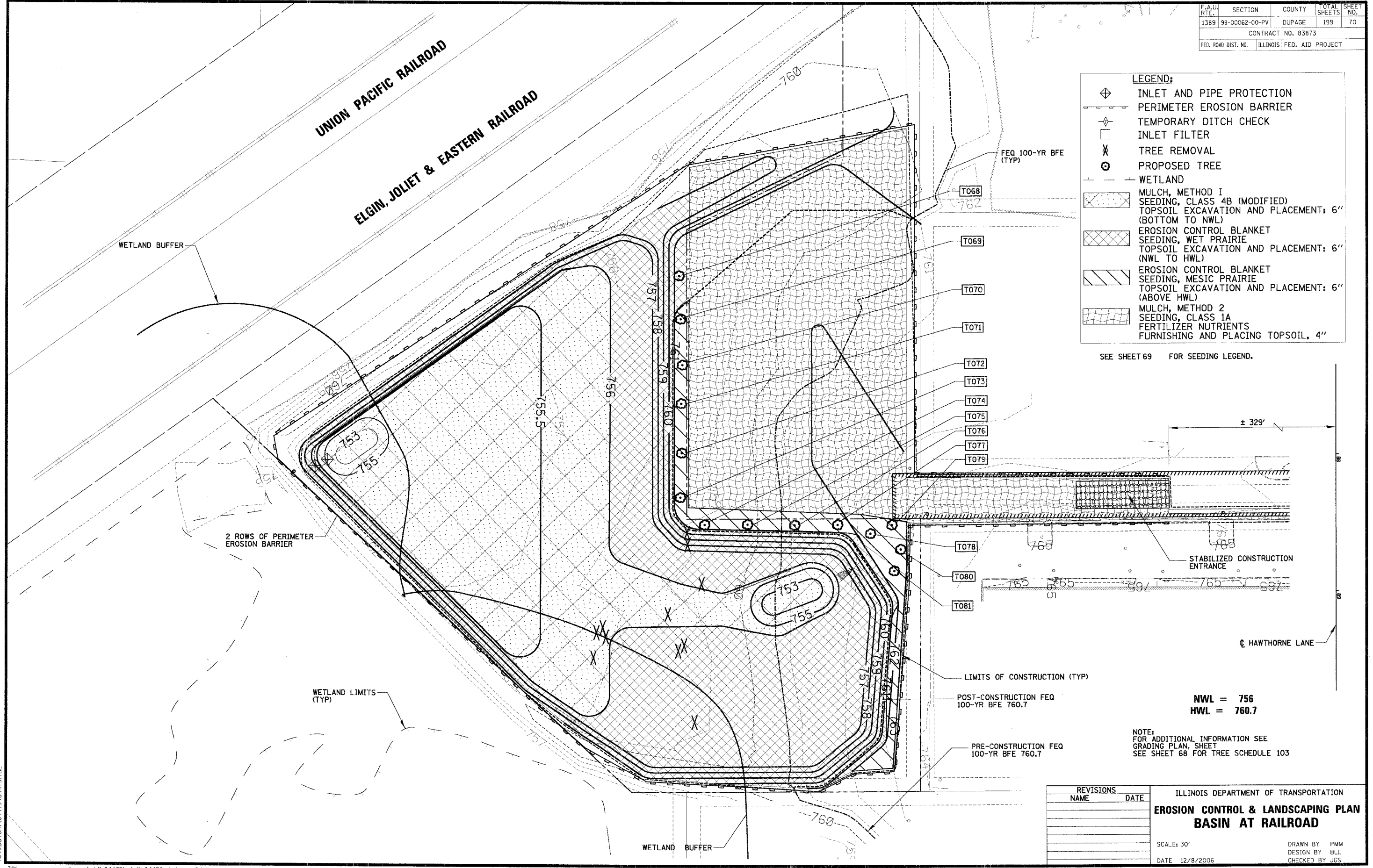


F.A.D. R/F	SECTION	COUNTY	TOTAL SHEETS	SHEET NO.
1389	99-00062-00-PV	DUPAGE	199	70
CONTRACT NO. 83873				
FED. ROAD DIST. NO.	ILLINOIS FED. AID PROJECT			

LEGEND:

- ⊕ INLET AND PIPE PROTECTION
- PERIMETER EROSION BARRIER
- ⊕ TEMPORARY DITCH CHECK
- INLET FILTER
- X TREE REMOVAL
- ⊕ PROPOSED TREE
- WETLAND
- ▨ MULCH, METHOD 1
SEEDING, CLASS 4B (MODIFIED)
TOPSOIL EXCAVATION AND PLACEMENT: 6" (BOTTOM TO NWL)
- ▨ EROSION CONTROL BLANKET
SEEDING, WET PRAIRIE
TOPSOIL EXCAVATION AND PLACEMENT: 6" (NWL TO HWL)
- ▨ EROSION CONTROL BLANKET
SEEDING, MESIC PRAIRIE
TOPSOIL EXCAVATION AND PLACEMENT: 6" (ABOVE HWL)
- ▨ MULCH, METHOD 2
SEEDING, CLASS 1A
FERTILIZER NUTRIENTS
FURNISHING AND PLACING TOPSOIL, 4"

SEE SHEET 69 FOR SEEDING LEGEND.



LIMITS OF CONSTRUCTION (TYP)
 POST-CONSTRUCTION FEQ
 100-YR BFE 760.7
 PRE-CONSTRUCTION FEQ
 100-YR BFE 760.7

NWL = 756
 HWL = 760.7

NOTE:
 FOR ADDITIONAL INFORMATION SEE
 GRADING PLAN, SHEET
 SEE SHEET 68 FOR TREE SCHEDULE 103

REVISIONS	
NAME	DATE

ILLINOIS DEPARTMENT OF TRANSPORTATION
**EROSION CONTROL & LANDSCAPING PLAN
 BASIN AT RAILROAD**
 SCALE: 30'
 DATE: 12/8/2006
 DRAWN BY: PMM
 DESIGN BY: BLL
 CHECKED BY: JGS

N:\WestCh\04479\04479.TBL