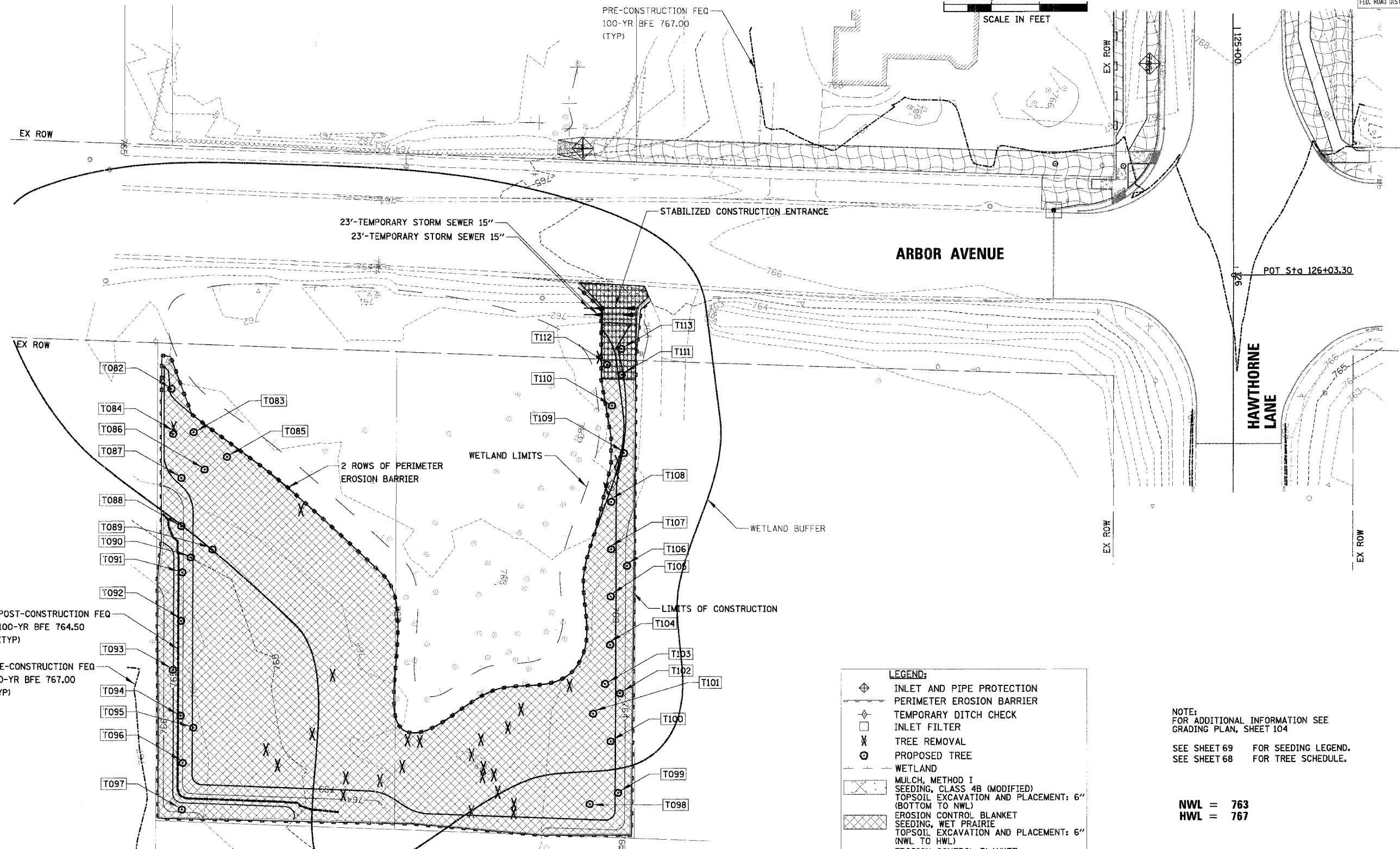
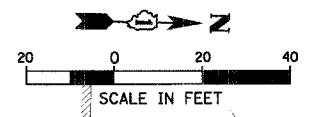


F.A.U. RTE.	SECTION	COUNTY	TOTAL SHEETS	SHEET NO.
1389	99-00062-00-PV	DUPAGE	199	71
CONTRACT NO. 83873				
FED. ROAD DIST. NO.	ILLINOIS	FED. AID PROJECT		



LEGEND:

- ◊ INLET AND PIPE PROTECTION
- PERIMETER EROSION BARRIER
- ◇ TEMPORARY DITCH CHECK
- INLET FILTER
- X TREE REMOVAL
- ⊙ PROPOSED TREE
- WETLAND
- MULCH, METHOD 1
- SEEDING, CLASS 4B (MODIFIED)
- TOPSOIL EXCAVATION AND PLACEMENT: 6" (BOTTOM TO NWL)
- EROSION CONTROL BLANKET
- SEEDING, WET PRAIRIE
- TOPSOIL EXCAVATION AND PLACEMENT: 6" (NWL TO HWL)
- EROSION CONTROL BLANKET
- SEEDING, MESIC PRAIRIE
- TOPSOIL EXCAVATION AND PLACEMENT: 6" (ABOVE HWL)
- MULCH, METHOD 2
- SEEDING, CLASS 1A
- FERTILIZER NUTRIENTS
- FURNISHING AND PLACING TOPSOIL, 4"

NOTE:
FOR ADDITIONAL INFORMATION SEE
GRADING PLAN, SHEET 104

SEE SHEET 69 FOR SEEDING LEGEND.
SEE SHEET 68 FOR TREE SCHEDULE.

NWL = 763
HWL = 767

REVISIONS	
NAME	DATE

ILLINOIS DEPARTMENT OF TRANSPORTATION
EROSION CONTROL & LANDSCAPING PLAN
ARBOR AVENUE LOTS

SCALE: 20'
DATE: 12/8/2006

DRAWN BY: PMM
DESIGN BY: BLL
CHECKED BY: JGS

N:\westchi\04479\04479.tbl