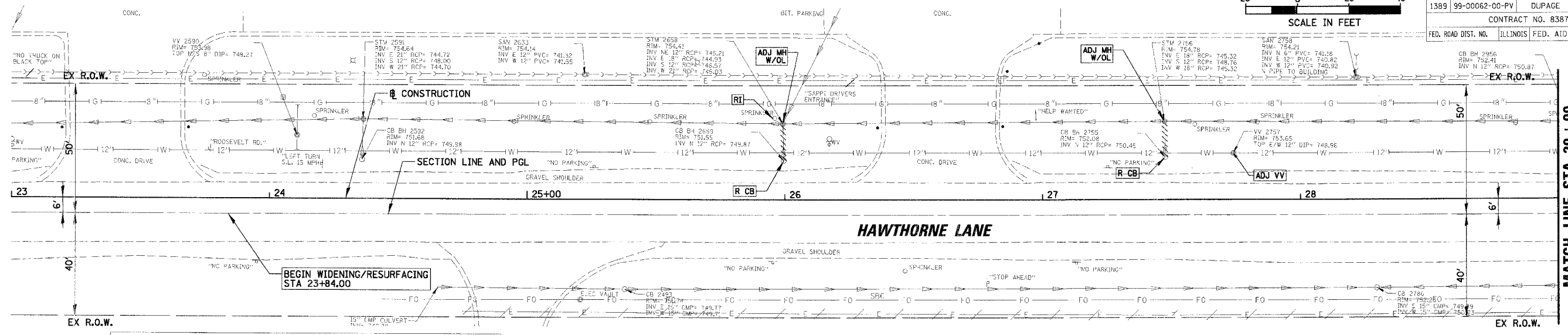


F.A.U. RTE.	SECTION	COUNTY	TOTAL SHEET SHEETS
1389	99-00062-00-PV	DUPAGE	199 72
CONTRACT NO. 83873		ILLINOIS FED. AID PROJECT	



**PROPOSED LEGEND**

TEMPORARY EASEMENT  
 BUILDING ADDRESS  
 TYPE A RAMP

COMB CC&G (DEPRESSED)  
 DETECTABLE WARNINGS

**EXISTING CONDITIONS**

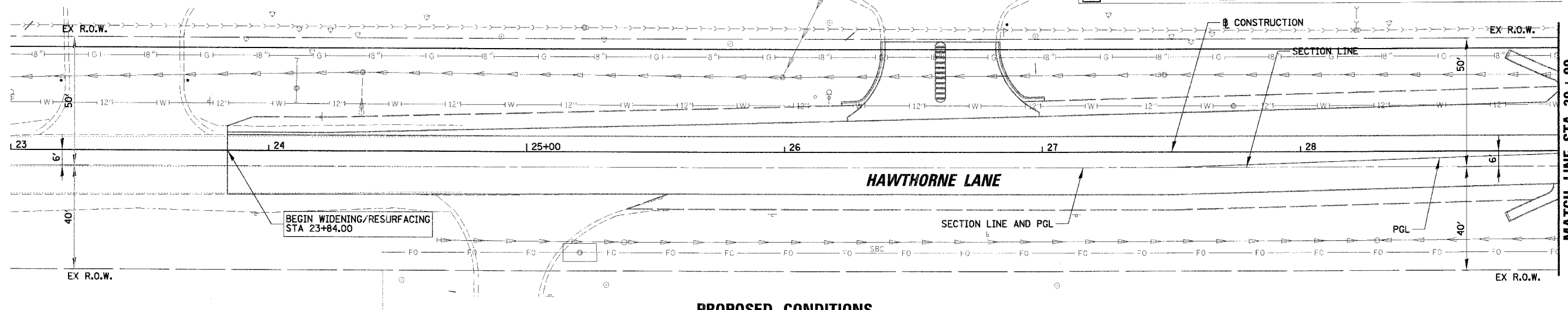
**LEGEND**

REMOVAL  
 REMOVAL, BY OTHERS  
 RECONSTRUCT  
 RELOCATE

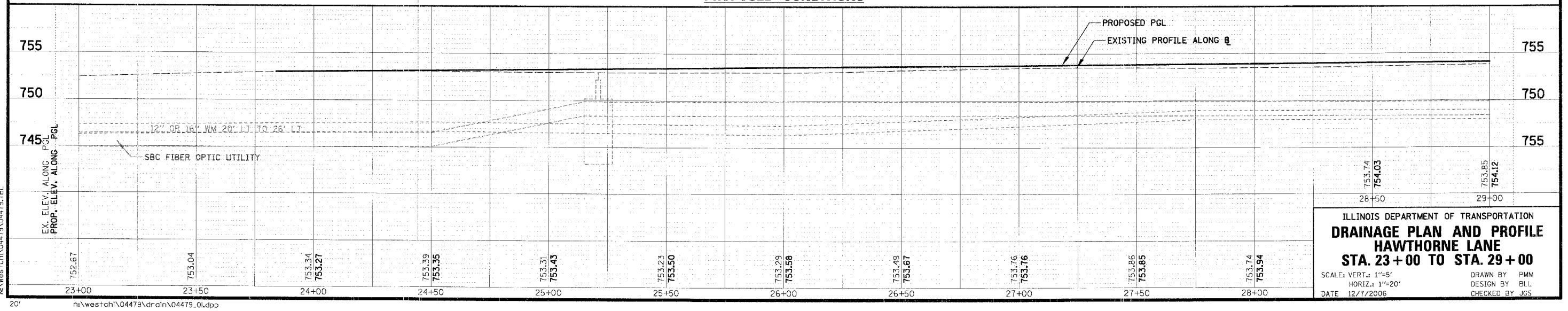
STRM SEW/ CULVERT REMOVAL  
 ABANDON  
 ADJUST  
 ADJUST, BY OTHERS

\* PROPERTY HAS NO CITY WATER OR SANITARY SERVICES

NOTE: 1. PROPOSED CONDITIONS HAVE EXISTING UTILITIES NOT SHOWN TO BE RELOCATED. CONTRACTOR TO VERIFY THESE FACILITIES AS WELL AS RELOCATED UTILITY FACILITIES (NOT SHOWN).  
 2. FOR DETAILS SEE SHEETS 100 TO 101.



**PROPOSED CONDITIONS**



ILLINOIS DEPARTMENT OF TRANSPORTATION  
**DRAINAGE PLAN AND PROFILE**  
**HAWTHORNE LANE**  
**STA. 23+00 TO STA. 29+00**

SCALE: VERT.: 1"=5'  
 HORIZ.: 1"=20'  
 DATE 12/7/2006

DRAWN BY PMM  
 DESIGN BY BLL  
 CHECKED BY JGS

**PLAN**

DATE	BY

SURVEYED BY  
 ALIGNED CHECKED  
 ADJUSTED CHECKED  
 PLANNED FILE NAME

**PROFILE**

DATE	BY

SURVEYED BY  
 GRADINGS CHECKED  
 STRUCTURE NOTATIONS CHECKED

N:\WestChl\04479\04479.TBL

n:\westchl\04479\drain\04479\_01.dbp