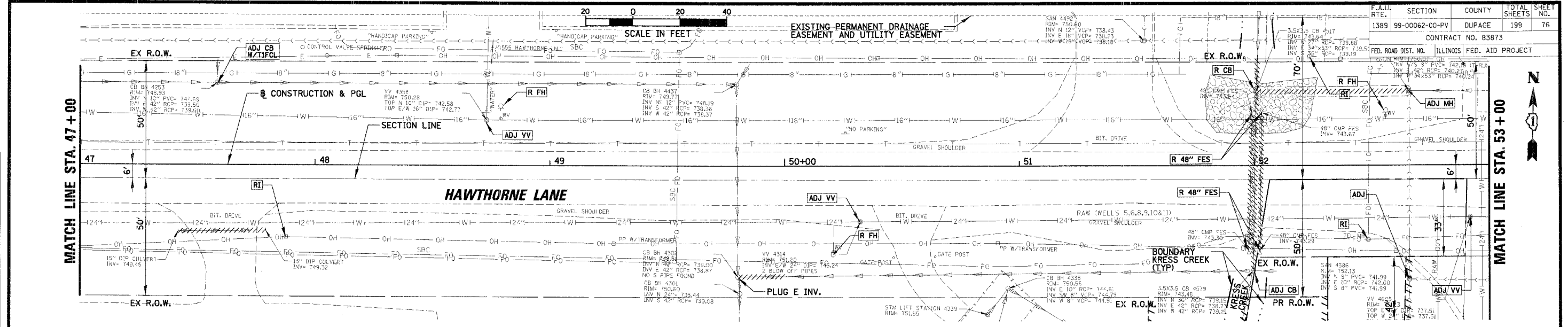


F.A.U. RTE.	SECTION	COUNTY	TOTAL SHEETS	SHEET NO.
1389	99-00062-00-PV	DUPAGE	199	76

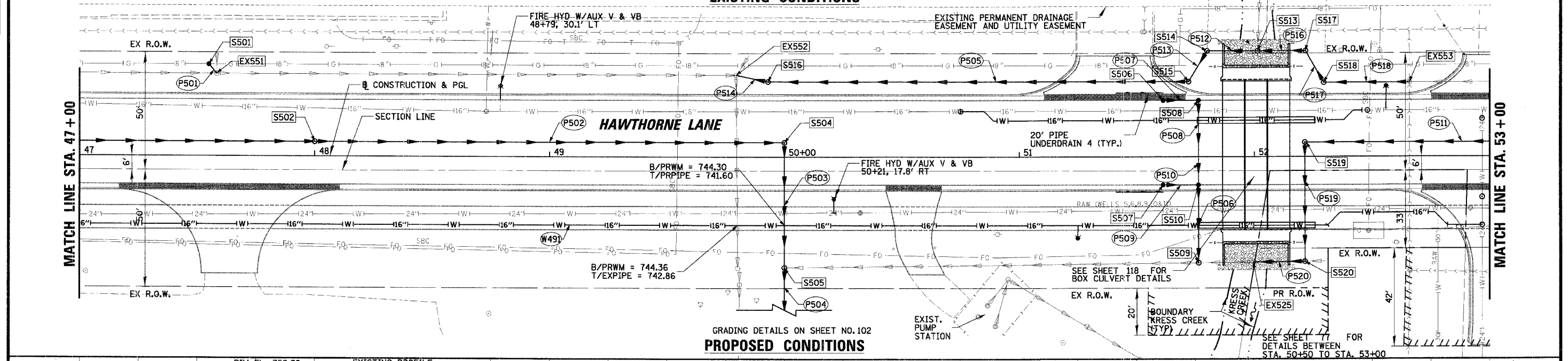
CONTRACT NO. 83873  
ILLINOIS FED. AID PROJECT

DATE	BY	REVISION

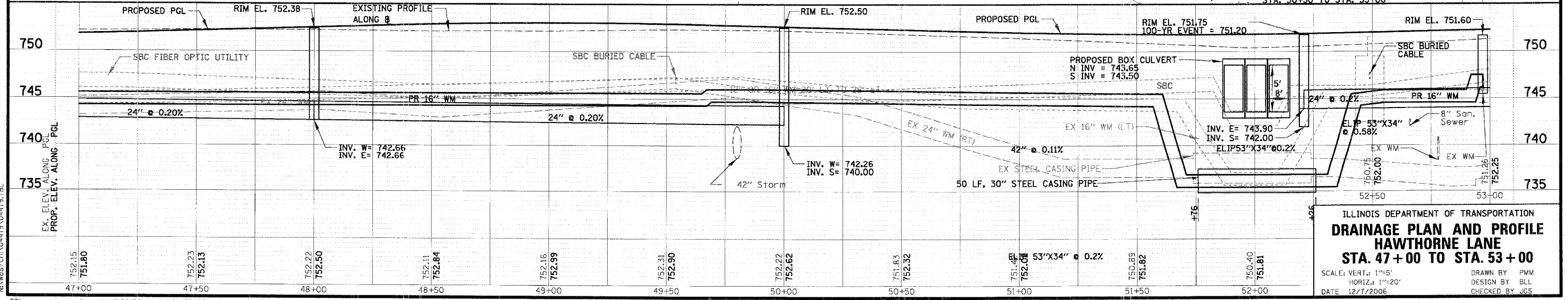
DATE	BY	REVISION



**EXISTING CONDITIONS**



**PROPOSED CONDITIONS**



ILLINOIS DEPARTMENT OF TRANSPORTATION  
**DRAINAGE PLAN AND PROFILE**  
**HAWTHORNE LANE**  
**STA. 47+00 TO STA. 53+00**  
 SCALE: VERT. 1"=5'  
 HORIZ. 1"=20'  
 DATE 12/7/2006  
 DRAWN BY PMM  
 DESIGN BY BLL  
 CHECKED BY JGS