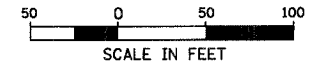


HAWTHORNE LANE

BLACKHAWK DRIVE



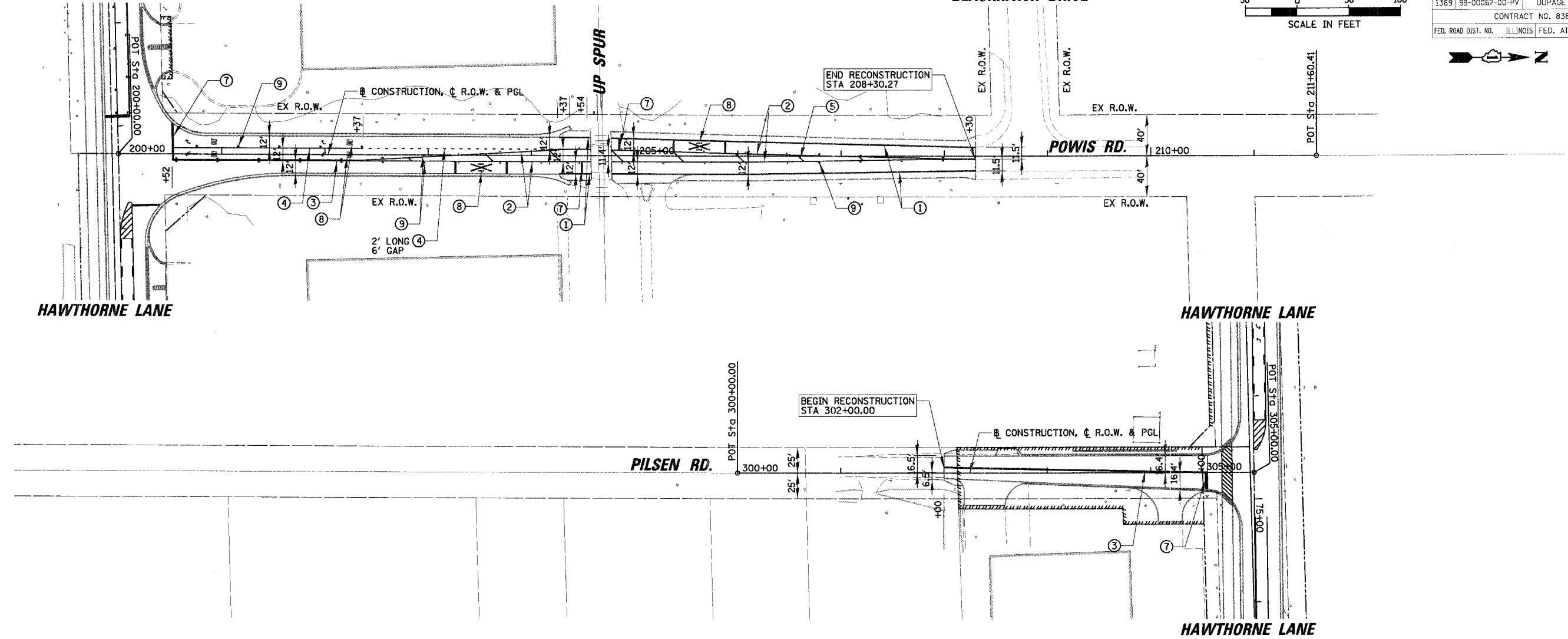
F.A.U. RT.:	SECTION	COUNTY	TOTAL SHEETS	SHEET NO.
1389	99-00062-00-PV	DUPAGE	199	109
CONTRACT NO. 83873				
FED. ROAD DIST. NO. ILLINOIS FED. AID PROJECT				



HAWTHORNE LANE

HAWTHORNE LANE

HAWTHORNE LANE



LEGEND	
①	THERMOPLASTIC PAVEMENT MARKING - LINE 4" (WHITE)
②	THERMOPLASTIC PAVEMENT MARKING - LINE 4" (YELLOW)
③	THERMOPLASTIC PAVEMENT MARKING - LINE 4" (YELLOW) (2 @ 11" C-C)
④	THERMOPLASTIC PAVEMENT MARKING - LINE 6" (WHITE)
⑤	THERMOPLASTIC PAVEMENT MARKING - LINE 12" (YELLOW)
⑥	THERMOPLASTIC PAVEMENT MARKING - LINE 12" (WHITE)
⑦	THERMOPLASTIC PAVEMENT MARKING - LINE 24" (WHITE)
⑧	THERMOPLASTIC PAVEMENT MARKING - LETTERS AND SYMBOLS (WHITE)
⑨	SNOWPLOWABLE RAISED PAVEMENT MARKER (SEE SHEET 98 )

REVISIONS	
NAME	DATE

ILLINOIS DEPARTMENT OF TRANSPORTATION  
**PAVEMENT MARKING  
 POWIS ROAD  
 PILSEN ROAD**

SCALE: 50'  
 DATE 12/7/2006

DRAWN BY PMM  
 DESIGN BY BLL  
 CHECKED BY JGS

N:\westch\04479\04479.tbl