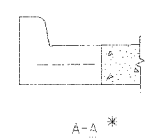
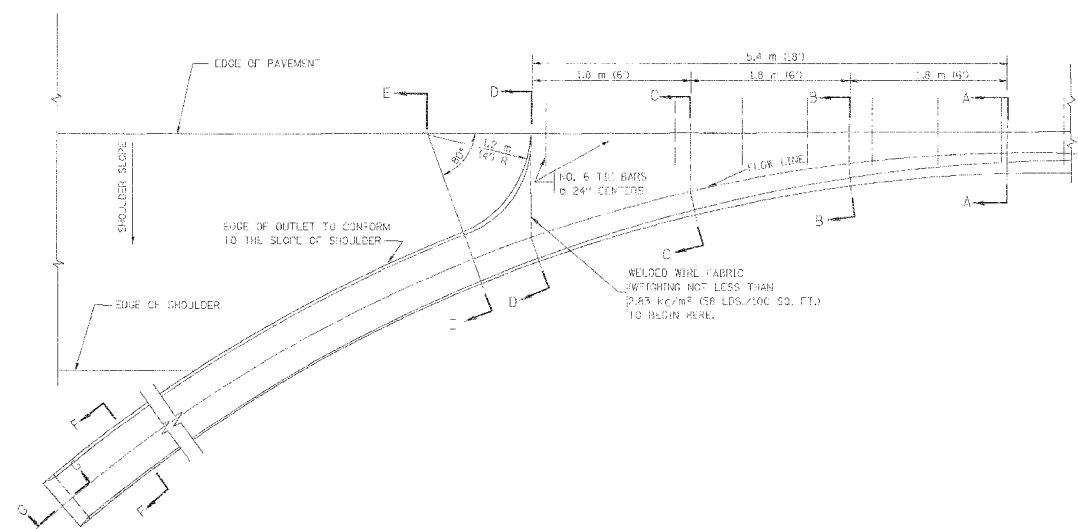


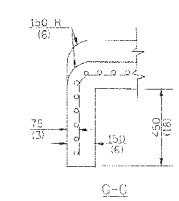
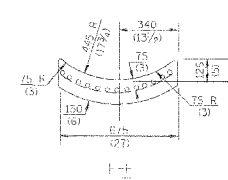
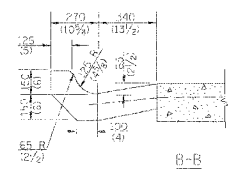
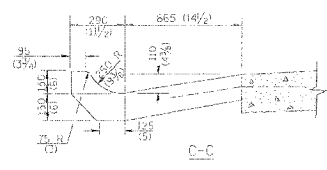
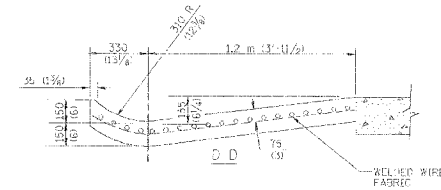
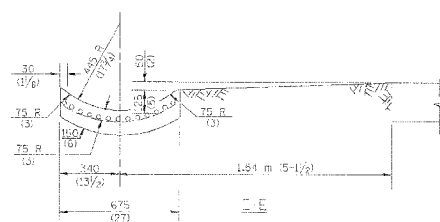
RECD FROM DL 7/2/83--DEL CREATED 7/18/83

F.A.U. R.T.E.	SECTION	COUNTY	TOTAL SHEETS	SHEET NO.
1389	99-00062-00-PV	DUPAGE	199	122
CONTRACT NO. 83873				
FED. ROAD DIST. NO.	ILLINOIS	FED. AID PROJECT		

STA.	TO STA.
FULL SHEET NO. 1	FULL SHEET NO. 1



* DIMENSIONS OF THE CURB & GUTTER AT SECTION A-A ARE SHOWN ON STATE STANDARD 60600. FOR DETAILS OF OUTLET FOR CONCRETE CURB & GUTTER, TYPE B-15.60 (B-6.24) SEE STATE STANDARD 60606.



GENERAL NOTES

GUTTER OUTLET SHALL BE TIED TO THE PAVEMENT IN ACCORDANCE WITH DETAILS FOR LONG-TERM CONSTRUCTION JOINT SHOWN ON STANDARD 42000.

TIE BARS SHALL BE NO. 20 (NO. 6) AT 600 (24) CENTERS UNLESS OTHERWISE SHOWN.

IF THE AVERAGE GRADE OF PAVEMENT FOR THE DISTANCE FROM SECTION A-A TO D-D EXCEEDS 2% THIS DISTANCE SHALL BE INCREASED 1.8 m (6') FOR EACH 1% INCREASE IN GRADE.

QUANTITIES

FOR SECTION A-A TO E-E AND CERTAIN WALLS:
 0.06 m³ (0.25 CU. YDS.) CLASS S1 CONCRETE (OUTLET) FOR 225 (9) PAVT.
 0.87 m³ (3.27 CU. YDS.) CLASS S1 CONCRETE (OUTLET) FOR 225 (9) PAVT.
 FOR SECTION F-F:
 0.02 m³ (0.045 CU. YDS.) CLASS S1 CONCRETE PER M (11').

ALL DIMENSIONS ARE IN MILLIMETERS (INCHES) UNLESS OTHERWISE SHOWN.

ILLINOIS DEPARTMENT OF TRANSPORTATION

OUTLET FOR CONCRETE CURB AND GUTTER

REVISIONS	
NAME	DATE
M. DE YONG	8/4/86
R. SHAH	10/13/94
R. SHAH	10/25/94
E. GOMEZ	12/21/00

SCALE: NONE
 DATE: 8/18/2007
 DRAWN BY: [blank]
 CHECKED BY: [blank]
 REVISION DATE: 12/21/00

REVISIONS	
NAME	DATE

ILLINOIS DEPARTMENT OF TRANSPORTATION
OUTLET FOR CONCRETE CURB AND GUTTER

SCALE: NONE
 DATE: 8/7/2006
 DRAWN BY: PMM
 DESIGN BY: BLL
 CHECKED BY: [blank]

M:\westch\04479\04479-1.B1