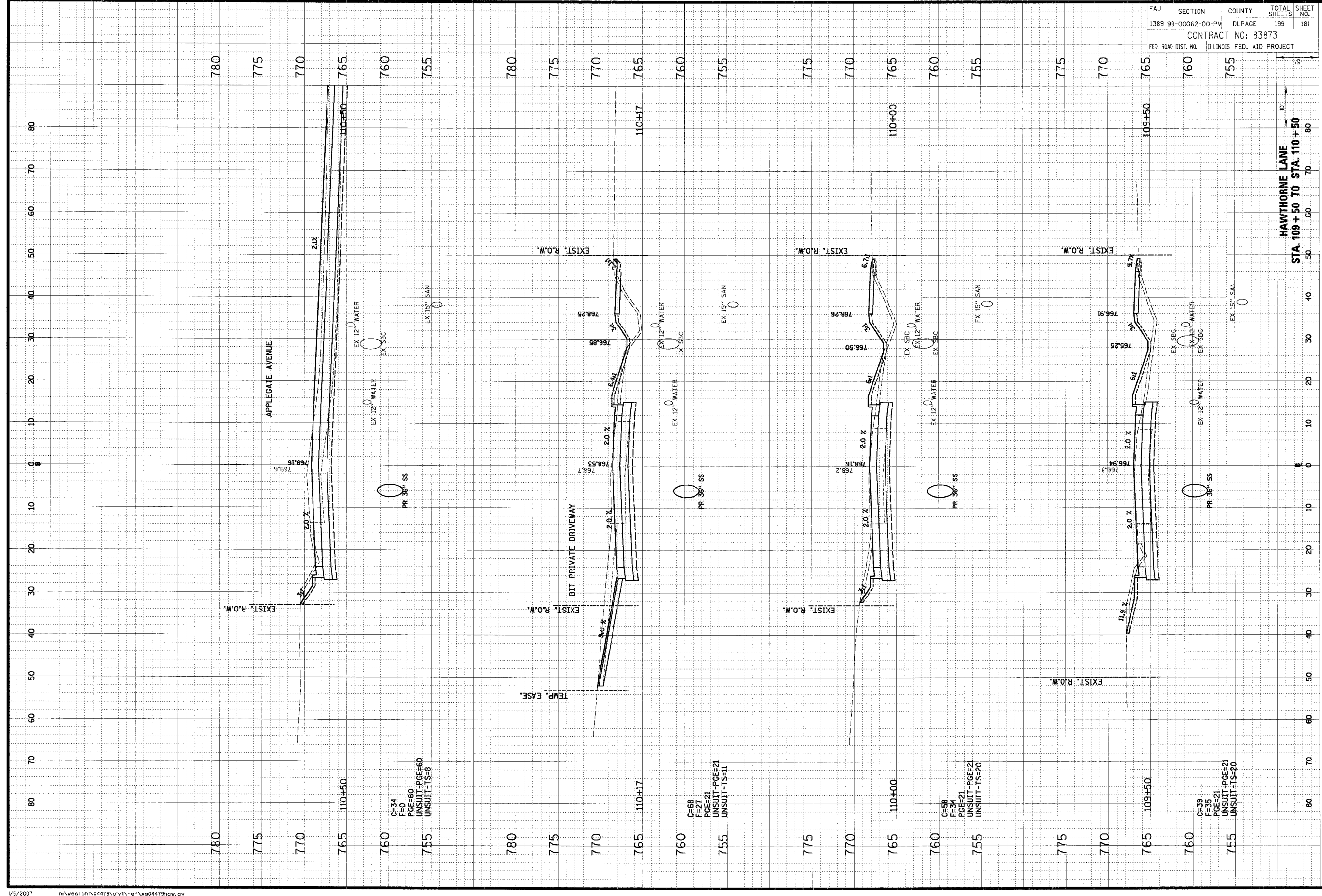


ORIGINAL SURVEY	DATE
SUPP-10	BY
NOTE BOOK	TEMP. AREAS
NO.	AREAS CHECKED

**CHRISTOPHER B. BURKE ENGINEERING LTD.**  
 9575 West Higgins Road, Suite 600  
 Rosemont, Illinois 60018  
 (847) 823-0500

FINAL SURVEY	DATE
NOTE BOOK	BY
TEMP. AREAS	TEMP. AREAS
NO.	AREAS CHECKED



FAU	SECTION	COUNTY	TOTAL SHEETS	SHEET NO.
1389	99-00062-00-PV	DUPAGE	199	181
CONTRACT NO: 83873				
FED. ROAD DIST. NO. ILLINOIS FED. AID PROJECT				

HAWTHORNE LANE  
 STA. 109+50 TO STA. 110+50