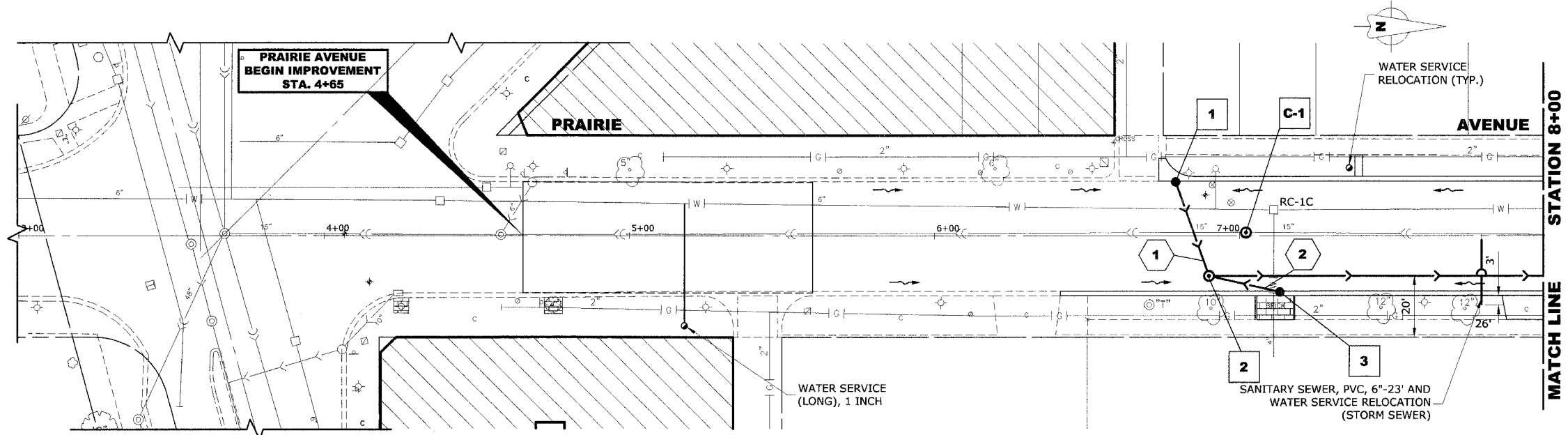


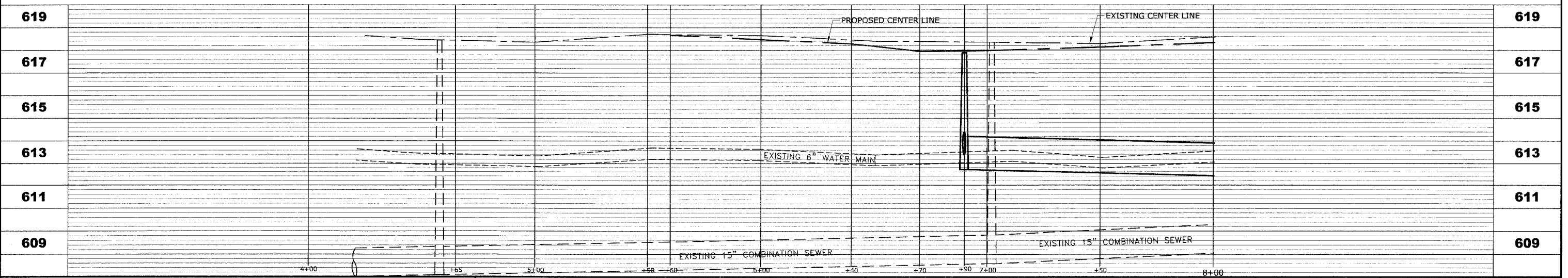
**EXISTING TOPOGRAPHY**

STRUC. NO.	STA.	OFFSET	TYPE	RIM ELEV.	INV. ELEV.
1	6+80	18' LT	R.D. CATCH BASIN, 4' DIA. TYPE 1 FRAME, OPEN LID	617.35	613.60 NE
2	6+90	13' RT	R.D. STORM SEWER MANHOLE, 4' DIA., TYPE 1 FRAME, CLOSED LID	617.90	613.40 NE 613.30 SW 612.70 N
3	7+13	18' RT	R.D. CATCH BASIN, 4' DIA. TYPE 1 FRAME, OPEN LID	617.40	613.65 SW
C-1	7+02	1' LT	R.D. COMBINED SEWER MANHOLE, 4' DIA., TYPE 1 FRAME, CLOSED LID	617.99	608.58 N-S



**PROPOSED IMPROVEMENTS**

PIPE NO.	LENGTH	DIA.	TYPE	SLOPE	C.Y.T.B.
1	32'	10"	SS,PVC, SDR 26	1.00%	1.7
2	24'	10"	SS,PVC, SDR 26	1.00%	1.2



**HANCOCK ENGINEERING**

- Civil Engineers
- Municipal Consultants
- Established 1911

9933 Roosevelt Road  
Westchester, Illinois 60154-2780  
Phone: 708/865-0306  
Fax: 708/865-1212

**PRAIRIE AVENUE IMPROVEMENTS  
PHASE II  
VILLAGE OF BROOKFIELD, ILLINOIS**

**EXISTING AND PROPOSED  
DRAINAGE AND UTILITIES  
PLAN AND PROFILE**

SCALE: H: 1"=20', V: 1"=2'

DRAWN BY: MK/LEV

BOOK NO.: #1475, #1504

DATE: 10-6-06

E.H.E. NO.: 125-04-26301

REVISION:

SHEET **19** / **47**

Drawing file: W:\Projects\2004263 - Prairie Ave 2nd Phase\Frank\Prairie.dwg Oct 05, 2006 - 3:13pm