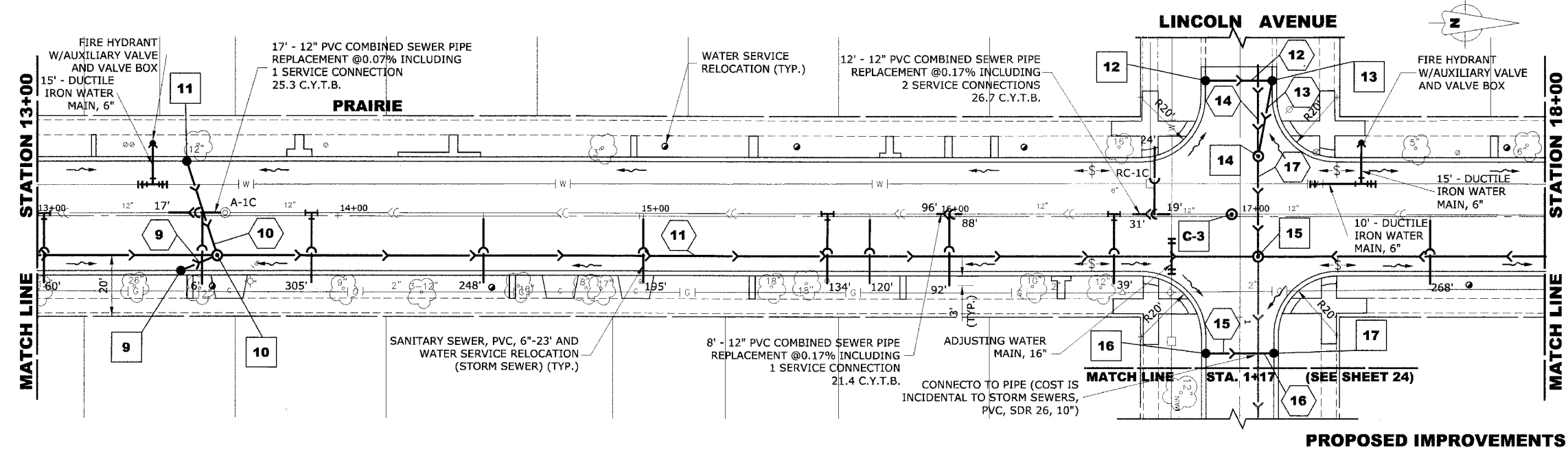
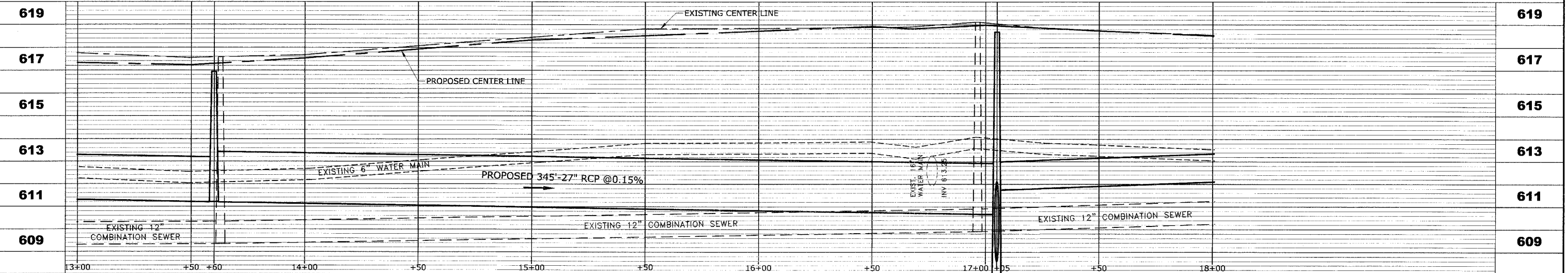


STRUC. NO.	STA.	OFFSET	TYPE	RIM ELEV.	INV. ELEV.
9	13+48	18' RT	R.D. CATCH BASIN, 4' DIA. TYPE 1 FRAME, OPEN LID	616.60	612.85 NW
10	13+60	13' RT	R.D. STORM SEWER MANHOLE, 5' DIA., TYPE 1 FRAME, CLOSED LID	616.95	612.70 SE 612.55 SW 611.20 N,S
11	13+50	18' LT	R.D. CATCH BASIN, 4' DIA. TYPE 1 FRAME, OPEN LID	616.60	612.85 NW
12	16+88	45' LT	R.D. CATCH BASIN, 4' DIA. TYPE 1 FRAME, OPEN LID	617.95	614.20 N
13	17+10	45' LT	R.D. CATCH BASIN, 4' DIA. TYPE 1 FRAME, OPEN LID	617.95	614.00 S 613.90 SE
14	17+05	20' LT	R.D. STORM SEWER MANHOLE, 5' DIA., TYPE 1 FRAME, CLOSED LID	618.40	613.65 NW 608.75 W 605.50 E
15	17+05	13' RT	BOX STRUCTURE	618.70	611.90 N 610.68 S 608.63 E 605.15 W
16	16+88	45' RT	R.D. CATCH BASIN, 4' DIA. TYPE 1 FRAME, OPEN LID	617.95	614.20 N
17	17+10	45' RT	R.D. CATCH BASIN, 4' DIA. TYPE 1 FRAME, OPEN LID	617.95	614.00 S
C-3	16+97	0	R.D. COMBINED SEWER MANHOLE, 4' DIA., TYPE 1 FRAME, CLOSED LID	618.99	609.91 N-S



PIPE NO.	LENGTH	DIA.	TYPE	SLOPE	C.Y.T.B.
9	13'	10"	SS,PVC, SDR 26	1.00%	0.5
10	32'	10"	SS,PVC, SDR 26	1.00%	1.4
11	345'	27"	SS,TY-2, RCCP, CL-III	0.15%	269.0
12	22'	10"	SS,PVC, SDR 26	1.00%	0.5
13	25'	12"	SS,PVC, SDR 26	1.00%	1.4
14	30'	42"	SS,TY-2, RCCP, CL-III	0.09%	44.4
15	19'	10"	SS,PVC, SDR 26	1.00%	0.5
16	3'	10"	SS,PVC, SDR 26	1.00%	0.2
17	35'	42"	SS,TY-2, RCCP, CL-III	1.00%	81.9



HANCOCK ENGINEERING

- ◆ Civil Engineers
- ◆ Municipal Consultants
- ◆ Established 1911

9933 Roosevelt Road
Westchester, Illinois 60154-2780
Phone: 708/865-0300
Fax: 708/865-1212

**PRAIRIE AVENUE IMPROVEMENTS
PHASE II
VILLAGE OF BROOKFIELD, ILLINOIS**

**EXISTING AND PROPOSED
DRAINAGE AND UTILITIES
PLAN AND PROFILE**

SCALE: H: 1"=20', V: 1"=2'
DRAWN BY: MK/LEV
BOOK NO.: #1475, #1504
DATE: 10-6-06
E.H.E. NO.: 125-04-26301

REVISION:

SHEET
21
OF
47

Drawing file: W:\Projects\12504263 - Prairie Ave 2nd Phase\Profile\Profile.dwg Oct 05, 2006 - 3:14pm