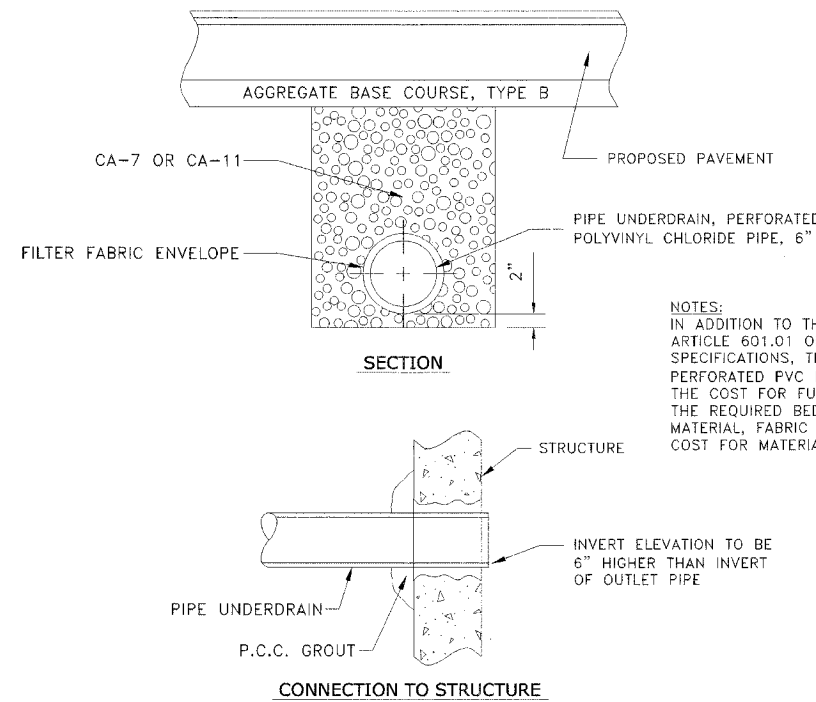
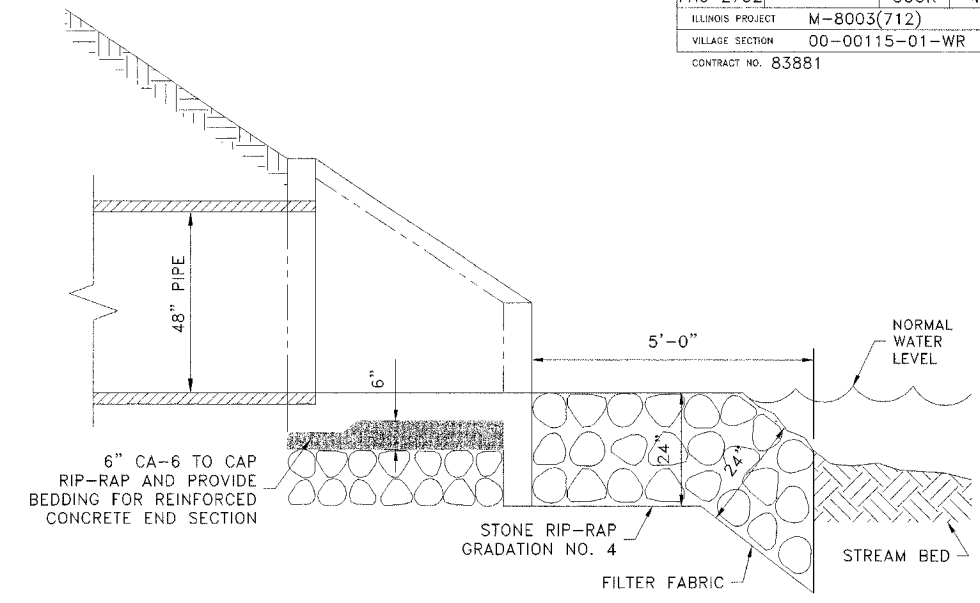


RESTRICTED DEPTH COMBINED MANHOLE



PIPE UNDERDRAIN DETAIL

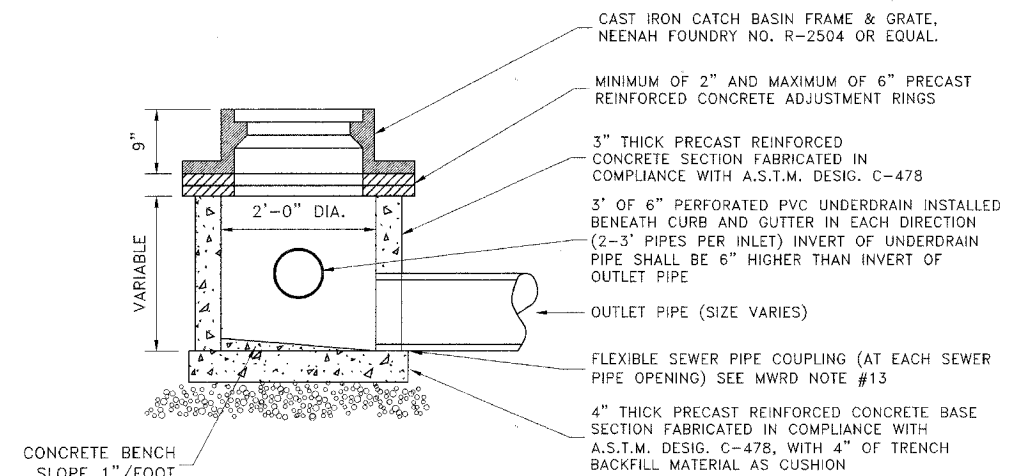


48" REINFORCED CONCRETE END SECTION RIP-RAP DETAIL

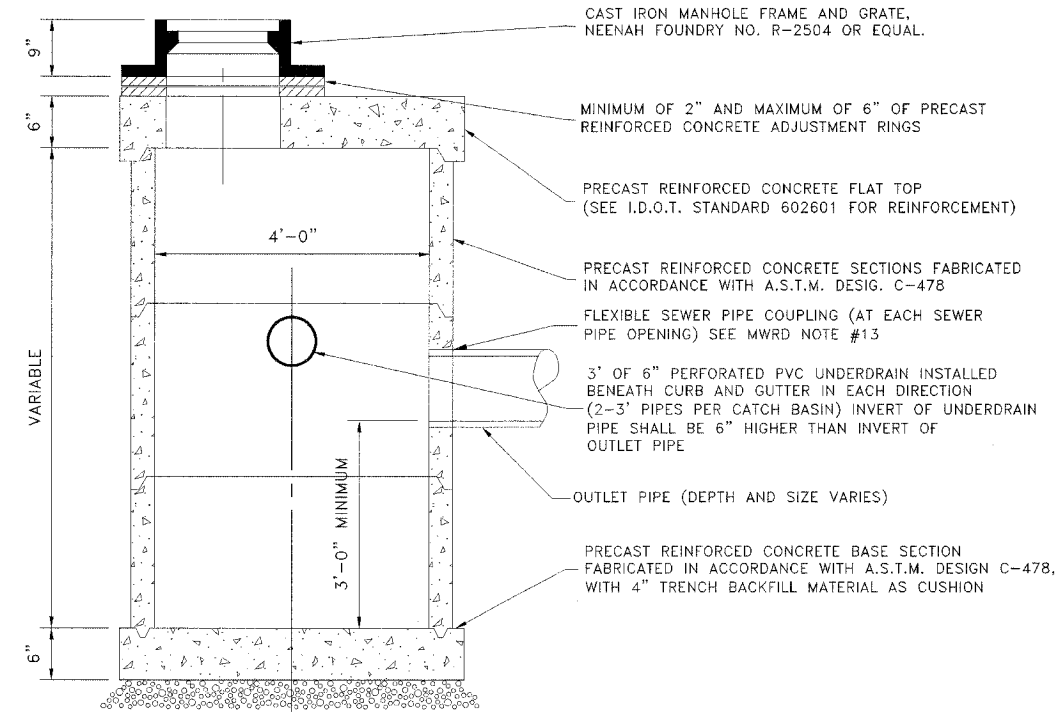
NOTES:
 1. NEENAH NO. R-5050-SF54 AUTOMATIC DRAINAGE GATE TO BE ATTACHED TO 48" STORM SEWER OUTLET PIPE. SEE I.D.O.T. STANDARD 542106-1 FOR END SECTION DETAIL.

DUCTILE IRON PIPE SPECIFICATIONS

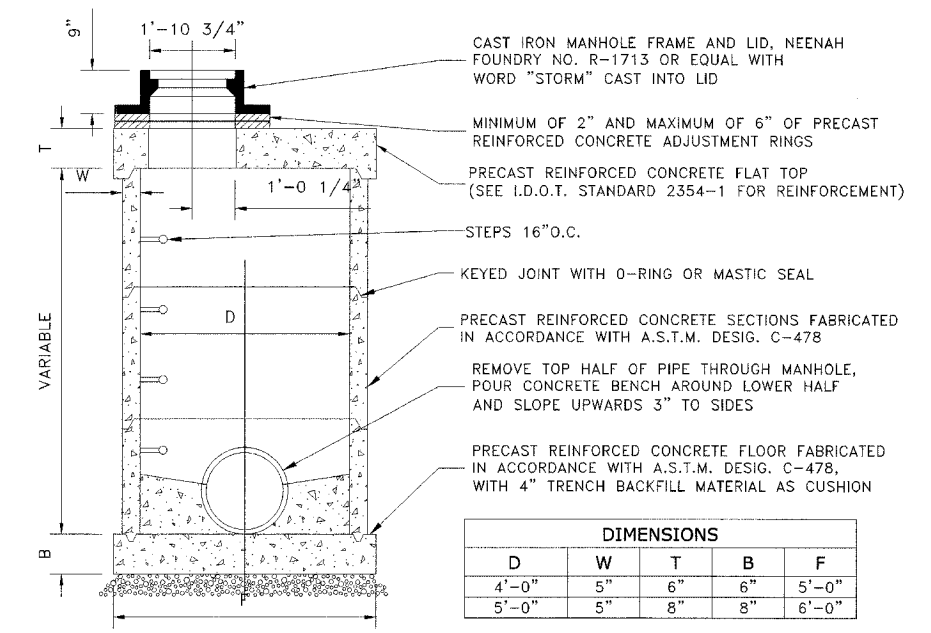
- ALL DUCTILE IRON PIPE WATER MAINS AND SEWER MAINS SHALL BE CLASS 52, CEMENT-LINED AND TAR-COATED, MEETING THE REQUIREMENTS OF SPECIFICATIONS ANSI/AWWA C151/A21.51 WITH "PUSH-ON" JOINTS MEETING THE REQUIREMENTS OF SPECIFICATIONS ANSI/AWWA C111/A21.11. WHERE SPECIFIED ON THE PLANS, OR IN THE SPECIFICATIONS, MECHANICAL JOINTS AND "LOCK-TYPE" JOINTS SHALL BE USED IN LIEU OF "PUSH-ON" JOINTS.
- ALL PIPE FITTINGS AND SPECIAL CASTINGS SHALL BE DUCTILE IRON CONFORMING TO ANSI/AWWA C153/A21.53 AND ANSI/AWWA C111/A21.11 SPECIFICATIONS AND SHALL MEET THE MINIMUM REQUIREMENTS OF CLASS 150 DUCTILE IRON PIPE. IF CERTAIN FITTINGS ARE NOT MANUFACTURED IN DUCTILE IRON, CAST IRON FITTINGS SHALL BE ACCEPTABLE. MECHANICAL JOINT TYPE FITTINGS SHALL BE USED.
- ALL PROPOSED DUCTILE IRON PIPE WATER MAIN AND SEWER MAIN WILL BE ENCASED WITHIN FOUR (4) MIL THICK, HIGH-DENSITY POLYETHYLENE TUBING. ALL FITTINGS SHALL BE ENCASED IN A DOUBLE-LAYER OF POLYETHYLENE TUBING. THE POLYETHYLENE MATERIAL SHALL BE MANUFACTURED AND INSTALLED IN COMPLIANCE WITH ANSI/AWWA C105/A21.5. ALL PROPOSED WATER AND SEWER SERVICES SHALL BE ENCASED IN POLYETHYLENE TUBING FOR A MINIMUM DISTANCE OF THREE FEET (3') FROM THE PROPOSED WATER MAIN AND SEWER MAIN.



INLET, TYPE A



RESTRICTED DEPTH CATCH BASIN



RESTRICTED DEPTH STORM MANHOLE

Drawing file: W:\Projects\12504263 - Prairie Ave 2nd Phase\2ND Project\Drainage-Detail.dwg Oct 05, 2006 - 2:32pm