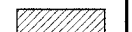
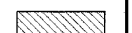
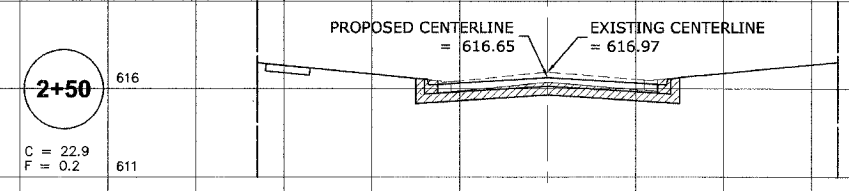
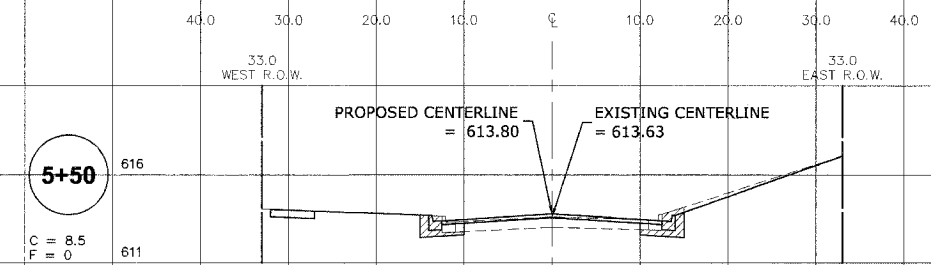
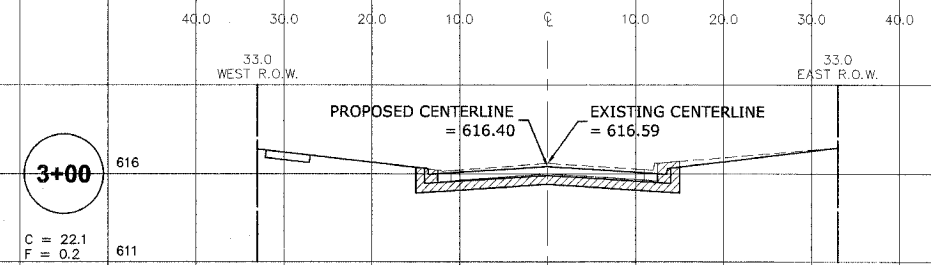


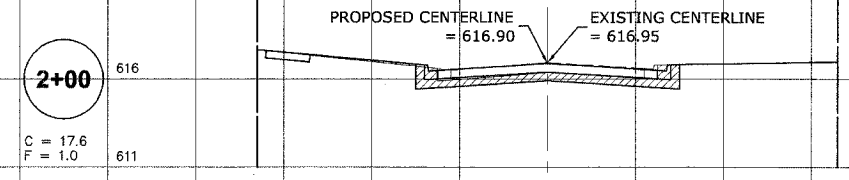
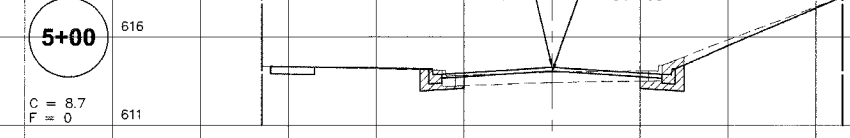
ROUTE NO.	SECTION	COUNTY	TOTAL SHEETS	SHEET NO.
FAU 2732	**	COOK	47	46
ILLINOIS PROJECT		M-8003(712)		
VILLAGE SECTION		00-00115-01-WR		
CONTRACT NO. 83881				

CROSS SECTION LEGEND

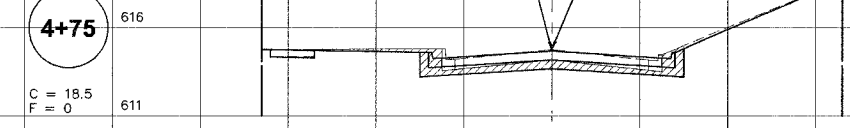
C = CUT (SQ. FT.) 
F = FILL (SQ. FT.) 



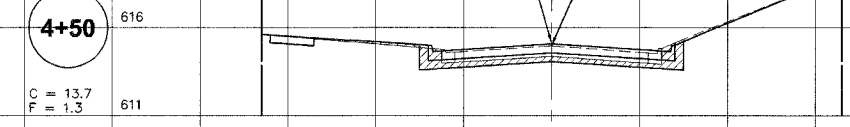
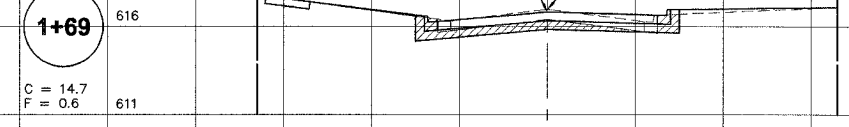
START PAVEMENT WIDENING



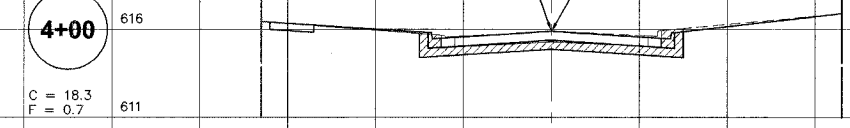
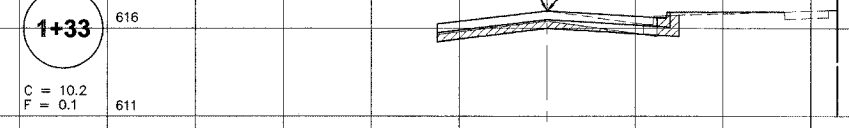
END RECONSTRUCTION



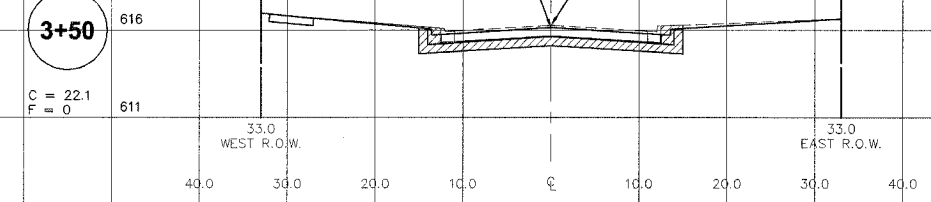
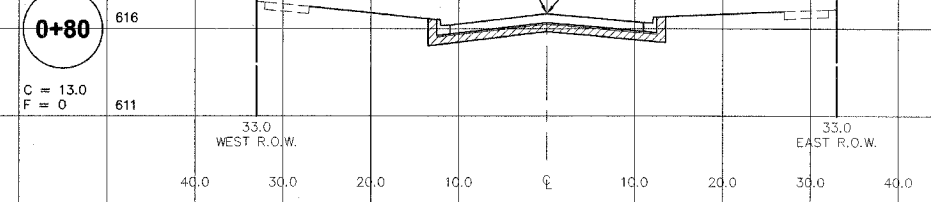
PT LINCOLN AVENUE



CL-CL LINCOLN AVENUE



BEGIN RECONSTRUCTION



Drawing file: W:\Projects\12504635 - Prairie Ave 2nd Phase\sect\sect6.dwg Oct 05, 2006 - 2:51pm



◆ Civil Engineers
 ◆ Municipal Consultants
 ◆ Established 1911

9933 Roosevelt Road
 Westchester, Illinois 60154-2780
 Phone: 708/865-0300
 Fax: 708/865-1212

**PRAIRIE AVENUE IMPROVEMENTS
 PHASE II
 VILLAGE OF BROOKFIELD, ILLINOIS**

**FOREST AVENUE
 STATION CROSS SECTIONS**

REVISION:

SCALE: 1"=10'H. & 1"=5'V
 DRAWN BY: MK/LEV
 BOOK NO.: #1475, #1504
 DATE: 10-6-06
 E.H.E. NO.: 125-04-26301