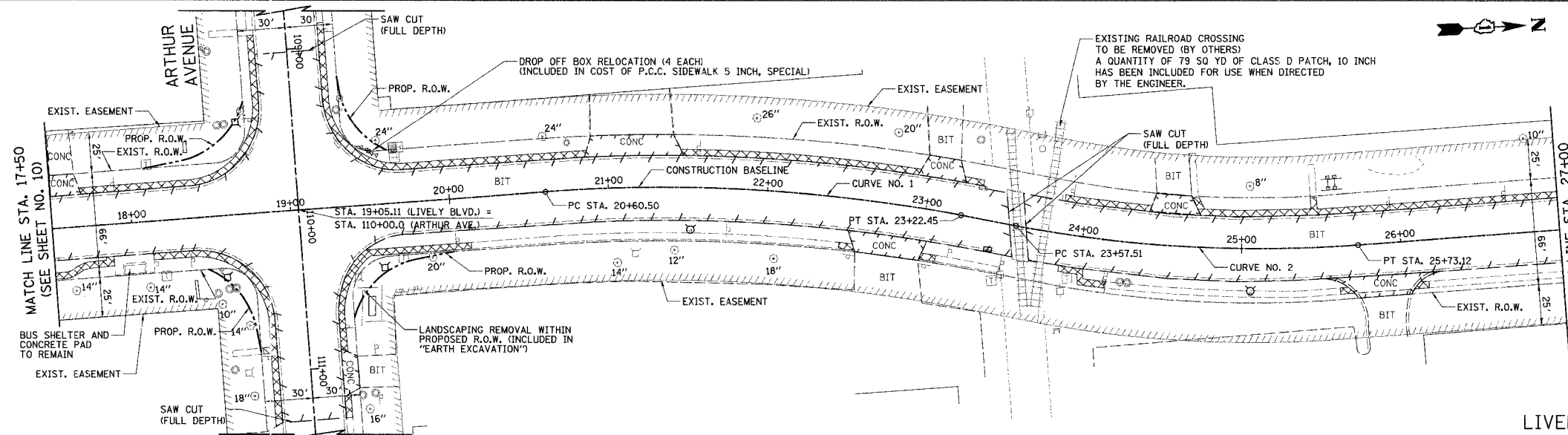
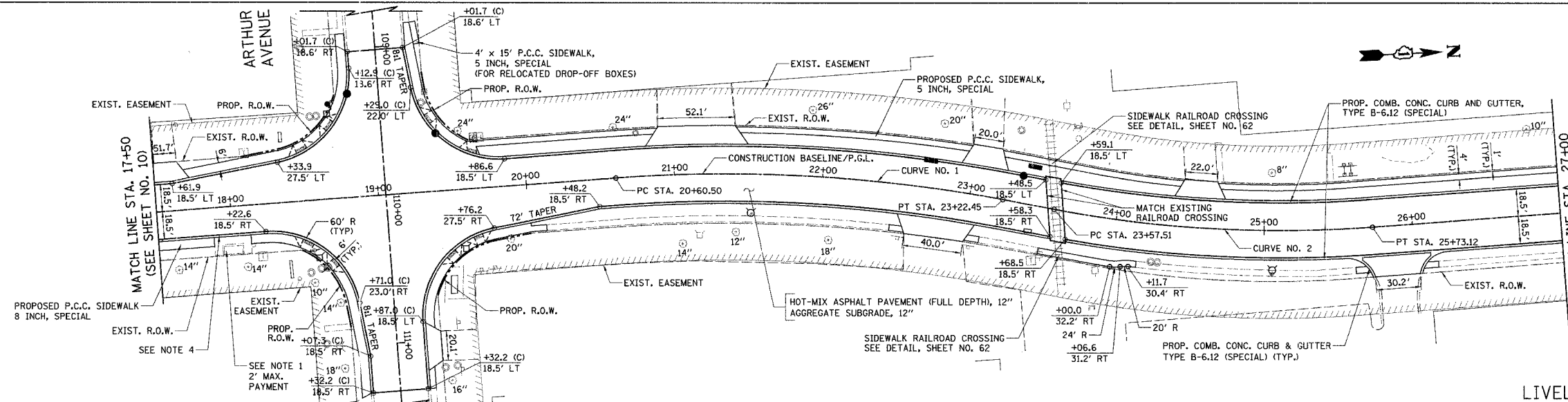


F.A.U. RTE.	SECTION	COUNTY	TOTAL SHEET NO.
1700	05-00045-02-PV	COOK/DUPAGE	103
STA. 17+50 TO STA. 27+00			11
FED. ROAD DIST. NO. 7 ILLINOIS FED. AID PROJECT W-80035440			



PROP. CURVE CURVE 1	PROP. CURVE CURVE 2
PI STA. = 21+92.23	PI STA. = 24+65.93
Δ = 15°-00'-30" (RT)	Δ = 14°-58'-28" (LT)
D = 5°-43'-46"	D = 6°-56'-42"
R = 1,000.00'	R = 825.00'
T = 131.73'	T = 108.43'
L = 261.94'	L = 215.61'
E = 8.64'	E = 7.09'
P.C. STA. = 20+60.50	P.C. STA. = 23+57.51
P.T. STA. = 23+22.45	P.T. STA. = 25+73.12

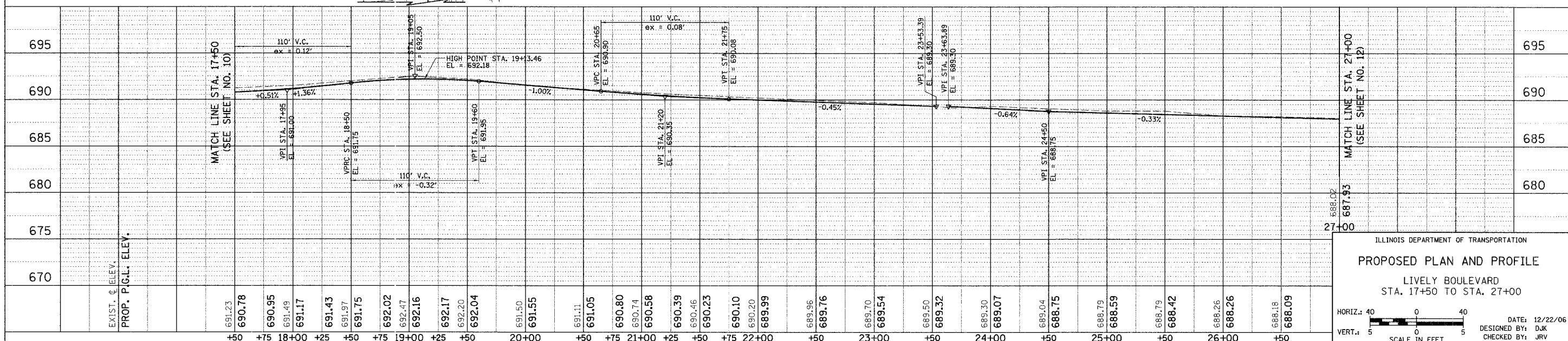
LIVELY BOULEVARD (EXISTING)



NOTES

- REMOVE EXISTING BRICK PAVERS AND PLACE TEMPORARY AGGREGATE TO STABILIZE REMAINING BRICK PAVERS. REPLACE PAVERS UPON COMPLETION OF CURB AND GUTTER. THIS WORK SHALL BE PAID FOR AS "REMOVE AND REINSTALL BRICK PAVER". THE MAXIMUM PAYMENT SHALL BE TO THE DIMENSIONS SHOWN ON THE PLANS.
- TRANSITION CROSS SLOPES FROM 2% TO MATCH RAILROAD CROSSING, STARTING AT THE FOLLOWING LOCATIONS:
SOUTH OF TRACKS: STA. 22+71, LT STA. 23+42, RT
NORTH OF TRACKS: STA. 24+59, LT STA. 23+65, RT
- STATION OFFSET CALL-OFFS NOTED WITH (C) ARE DEFINED BY THE CROSS STREET ALIGNMENT.
- VARY CURB HEIGHT FROM 4" TO 9", AS DIRECTED BY THE ENGINEER. THIS WORK SHALL BE INCLUDED IN THE COST OF "COMB. CONC. CURB AND GUTTER, TYPE B-6.12 (SPECIAL)".
- ALL PROPOSED SIDEWALK SHALL BE 5 INCH THICK EXCEPT WHERE NOTED.

LIVELY BOULEVARD (PROPOSED)



ILLINOIS DEPARTMENT OF TRANSPORTATION

PROPOSED PLAN AND PROFILE

LIVELY BOULEVARD
STA. 17+50 TO STA. 27+00

HORIZ.: 40
VERT.: 5

SCALE IN FEET

DATE: 12/22/06
DESIGNED BY: DJK
CHECKED BY: JRV