

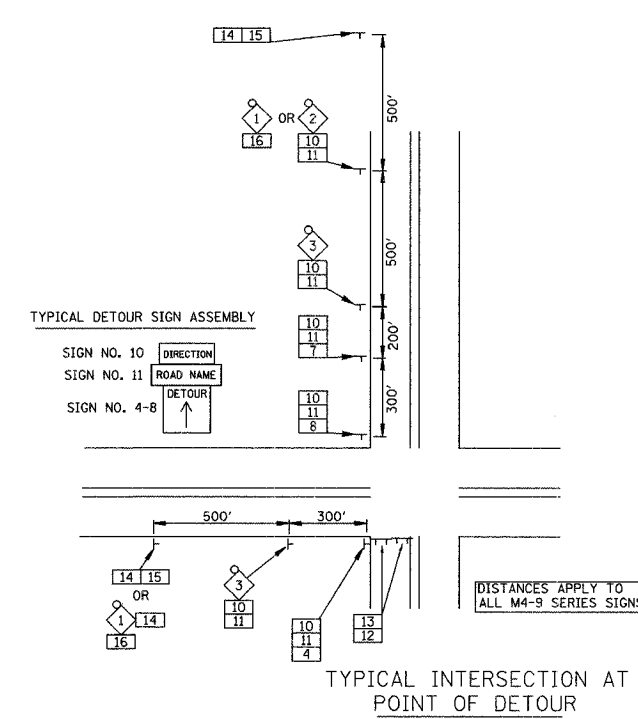
F.A.U. RTE.	SECTION	COUNTY	TOTAL SHEETS	SHEET NO.
1700	05-00045-02-PV	COOK/DUPAGE	103	17
DETOUR PLAN AND ADVANCE CONSTRUCTING SIGNING				
FED. ROAD DIST. NO. 7	ILLINOIS	FED. AID PROJECT M-800315441		

LEGEND

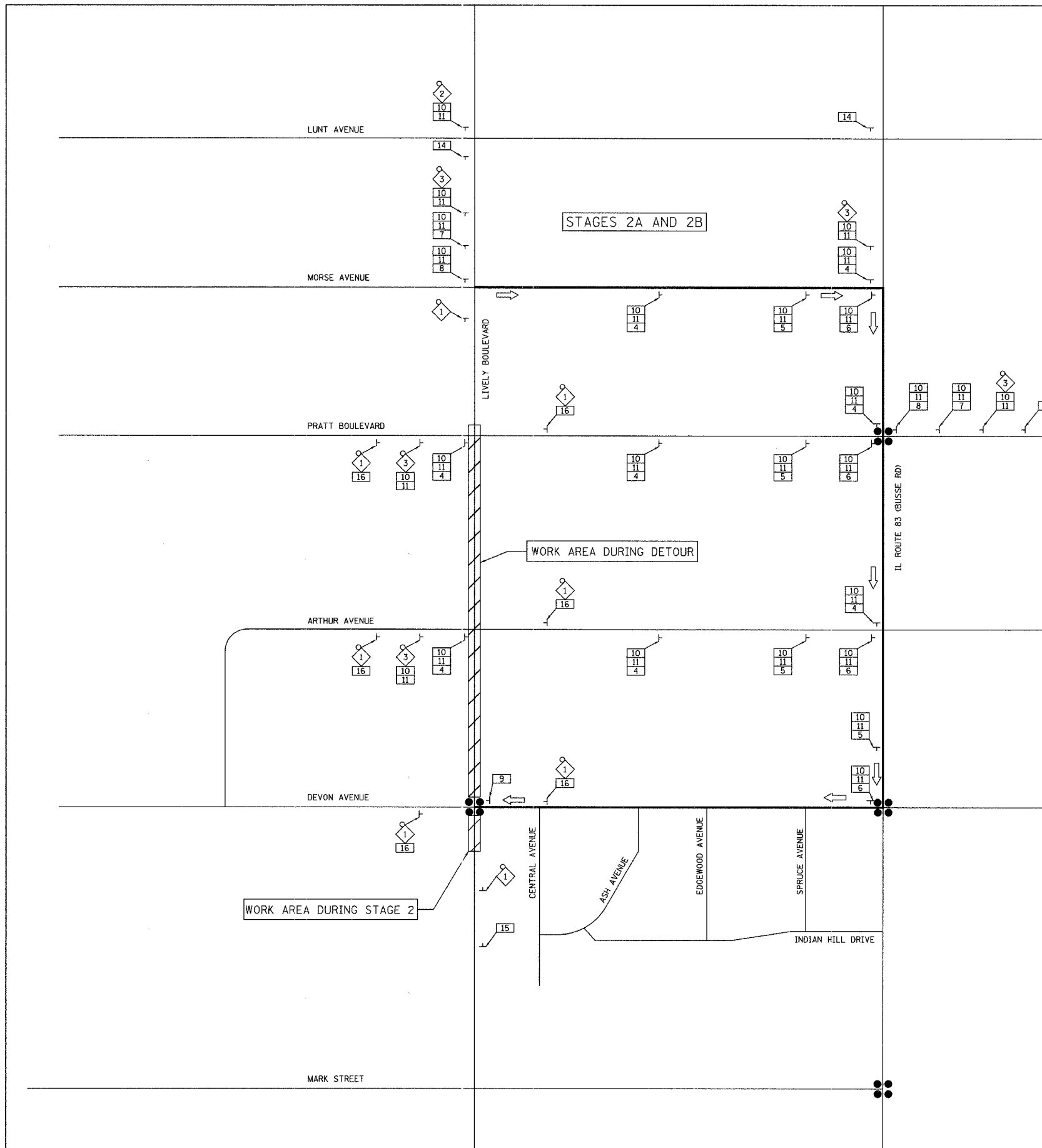
- SIGNALIZED INTERSECTION
- 48" X 48" CONSTRUCTION WARNING SIGN WITH AMBER FLASHING LIGHT (NUMBER DENOTES TYPE)
- M4-9 SERIES DETOUR SIGN WITH ROAD NAME & DIRECTION PLATES (NUMBER DENOTES TYPE)
- TYPE III BARRICADE WITH AMBER FLASHING LIGHTS
- DETOUR ROUTE
- DETOUR ROUTE DIRECTION
- SIGN POST

SCHEDULE OF SIGNS

SIGN NO.	SIGN TYPE
1	W20-1-4848
2	W20-2(0)-48
3	W20-2(0)-48
4	M4-9(0)-3030
5	M4-9R(0)-3030
6	M4-9R(0)-3024
7	M4-9L(0)-3030
8	M4-9L(0)-3024
9	M4-8a(0)-2418
10	M3-2(0)-2412
11	W17-1100-2412
12	M4-10L(0)-4818
13	R11-2-4830
14	SPECIAL(0)-3642
15	(SEE SHEET NO. 70 FOR DETAILS)
16	M6-10(0)-2115
17	M6-10(0)-2115



GENERAL NOTES
SEE SHEET NO. 16 FOR DETOUR NOTES



ILLINOIS DEPARTMENT OF TRANSPORTATION

DETOUR PLAN AND ADVANCE CONSTRUCTING SIGNING

STAGE 2A AND 2B

DATE: 12/22/06
DESIGNED BY: DJK
CHECKED BY: JRV

NOT TO SCALE