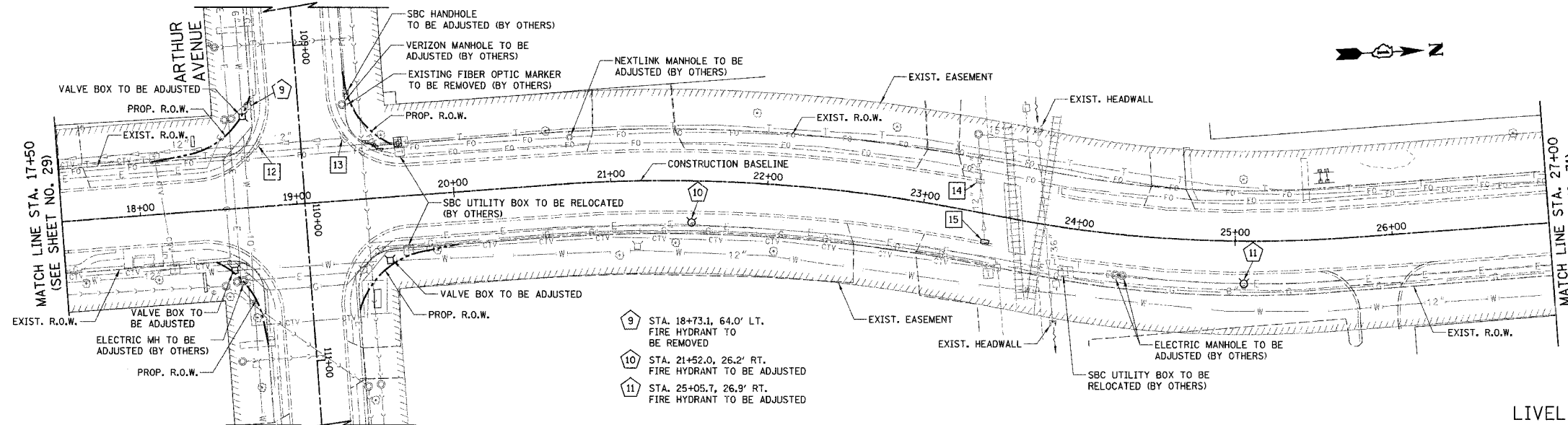
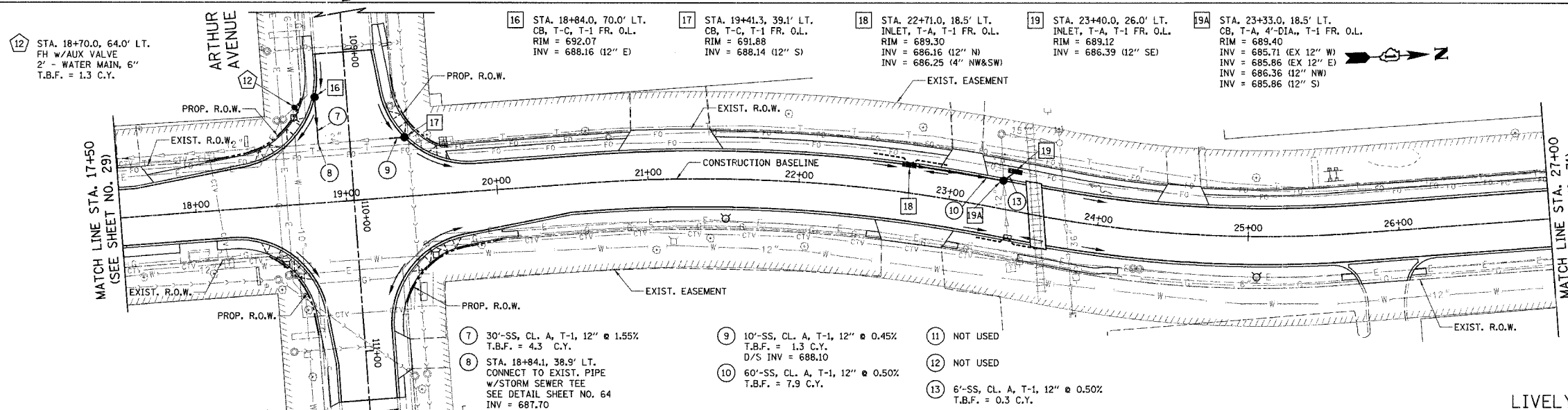


F.A.U. RTE.	SECTION	COUNTY	TOTAL SHEETS	SHEET NO.
1700	05-00045-02-PV	COOK/DUPAGE	103	30
STA. 17+50		TO STA. 27+00		
FED. ROAD DIST. NO. 7		ILLINOIS FED. AID PROJECT M-8003544		



- 12 STA. 18+77.1, 38.9' LT. REMOVING INLET TO MAINTAIN FLOW
- 13 STA. 19+32.6, 39.1' LT. REMOVING INLET TO MAINTAIN FLOW
- 14 STA. 23+33.0, 18.5' LT. INLET TO BE REMOVED
- 15 STA. 23+42.7, 17.7' RT. INLET TO BE ADJUSTED w/NEW T-1 FR., O.L. EX RIM = 688.87 PR RIM = 688.98 INV = 685.51 (EX 12" N) INV = 685.87 (4" N&S)

LIVELY BOULEVARD (EXISTING)



12 STA. 18+70.0, 64.0' LT. FH w/AUX VALVE 2" - WATER MAIN, 6" T.B.F. = 1.3 C.Y.

16 STA. 18+84.0, 70.0' LT. CB, T-C, T-1 FR. O.L. RIM = 692.07 INV = 688.16 (12" E)

17 STA. 19+41.3, 39.1' LT. CB, T-C, T-1 FR. O.L. RIM = 691.88 INV = 688.14 (12" S)

18 STA. 22+71.0, 18.5' LT. INLET, T-A, T-1 FR. O.L. RIM = 689.30 INV = 686.16 (12" N) INV = 686.25 (4" NW&SW)

19 STA. 23+40.0, 26.0' LT. INLET, T-A, T-1 FR. O.L. RIM = 689.12 INV = 686.39 (12" SE)

19A STA. 23+33.0, 18.5' LT. CB, T-A, 4'-DIA., T-1 FR. O.L. RIM = 689.40 INV = 685.71 (EX 12" W) INV = 685.86 (EX 12" E) INV = 686.36 (12" NW) INV = 685.86 (12" S)

7 30'-SS, CL. A, T-1, 12" @ 1.55% T.B.F. = 4.3 C.Y.

8 STA. 18+84.1, 38.9' LT. CONNECT TO EXIST. PIPE w/STORM SEWER TEE SEE DETAIL SHEET NO. 64 INV = 687.70

9 10'-SS, CL. A, T-1, 12" @ 0.45% T.B.F. = 1.3 C.Y. D/S INV = 688.10

10 60'-SS, CL. A, T-1, 12" @ 0.50% T.B.F. = 7.9 C.Y.

11 NOT USED

12 NOT USED

13 6'-SS, CL. A, T-1, 12" @ 0.50% T.B.F. = 0.3 C.Y.

LIVELY BOULEVARD (PROPOSED)

EXIST. ELEV.	PROP. P.G.L. ELEV.	STATION	ELEVATION
		MATCH LINE STA. 17+50 (SEE SHEET NO. 29)	695
			690
			685
			680
			675
			670
		MATCH LINE STA. 27+00 (SEE SHEET NO. 31)	695
			690
			685
			680
			675
			670
			665
			660
			655
			650
			645
			640
			635
			630
			625
			620
			615
			610
			605
			600
			595
			590
			585
			580
			575
			570
			565
			560
			555
			550
			545
			540
			535
			530
			525
			520
			515
			510
			505
			500
			495
			490
			485
			480
			475
			470
			465
			460
			455
			450
			445
			440
			435
			430
			425
			420
			415
			410
			405
			400
			395
			390
			385
			380
			375
			370
			365
			360
			355
			350
			345
			340
			335
			330
			325
			320
			315
			310
			305
			300
			295
			290
			285
			280
			275
			270
			265
			260
			255
			250
			245
			240
			235
			230
			225
			220
			215
			210
			205
			200
			195
			190
			185
			180
			175
			170
			165
			160
			155
			150
			145
			140
			135
			130
			125
			120
			115
			110
			105
			100
			95
			90
			85
			80
			75
			70
			65
			60
			55
			50
			45
			40
			35
			30
			25
			20
			15
			10
			5
			0

ILLINOIS DEPARTMENT OF TRANSPORTATION
DRAINAGE AND UTILITIES
 LIVELY BOULEVARD
 STA. 17+50 TO STA. 27+00

HORIZ.: 40' SCALE IN FEET
 VERT.: 5'

DATE: 12/22/06
 DESIGNED BY: KRK
 CHECKED BY: JRV