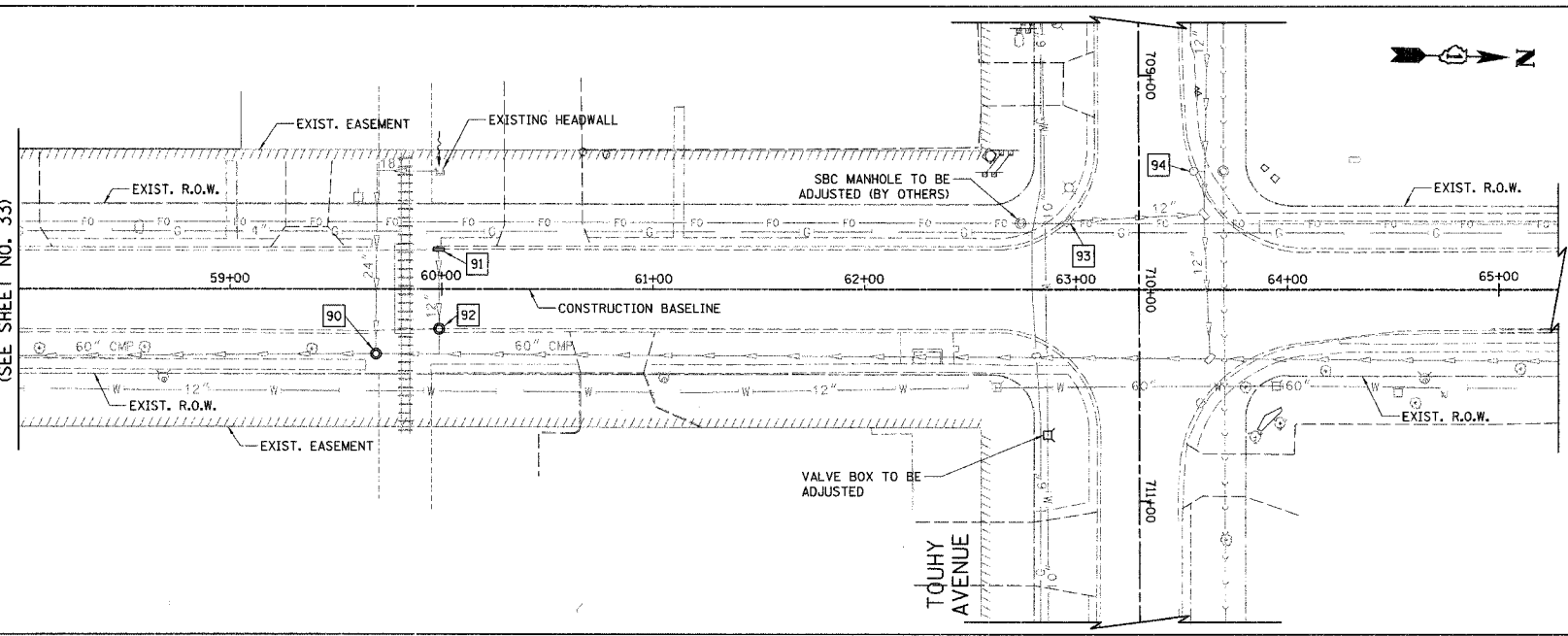


F.A.U. RTE.	SECTION	COUNTY	TOTAL SHEETS	SHEET NO.
1700	05-00045-02-PV	COOK/DUPAGE	103	34
STA. 58+00		TO STA. 63+58		
FED. ROAD DIST. NO. 7		ILLINOIS FED. AID PROJECT M-800315441		

- 90 STA. 59+68.9, 30.4' RT. MH TO BE RECONSTRUCTED w/ NEW T-1 FR. O.L. EX. RIM = 689.39 PR. RIM = 689.29
- 91 STA. 59+98.7, 18.7' LT. INLET TO BE ADJUSTED w/NEW T-1 FR. O.L. EX RIM = 689.40 PR RIM = 689.96 INV = 685.75 (EX 12" E) INV = 685.96 (12" N)
- 92 STA. 59+98.9, 18.7' RT. MH TO BE ADJUSTED w/NEW T-1 FR. O.L. EX RIM = 689.24 PR RIM = 689.85 INV = 685.33 (EX 12" E&W) INV = 685.51 (12" N)
- 93 STA. 62+96.4, 32.1' LT. INLET TO BE REMOVED ABANDON EXISTING STORM SEWER
- 94 STA. 63+55.8, 55.6' LT. EXIST. CB RIM = 690.78 INV = 687.53 (EX 12" N) INV = 687.53 (12" S)

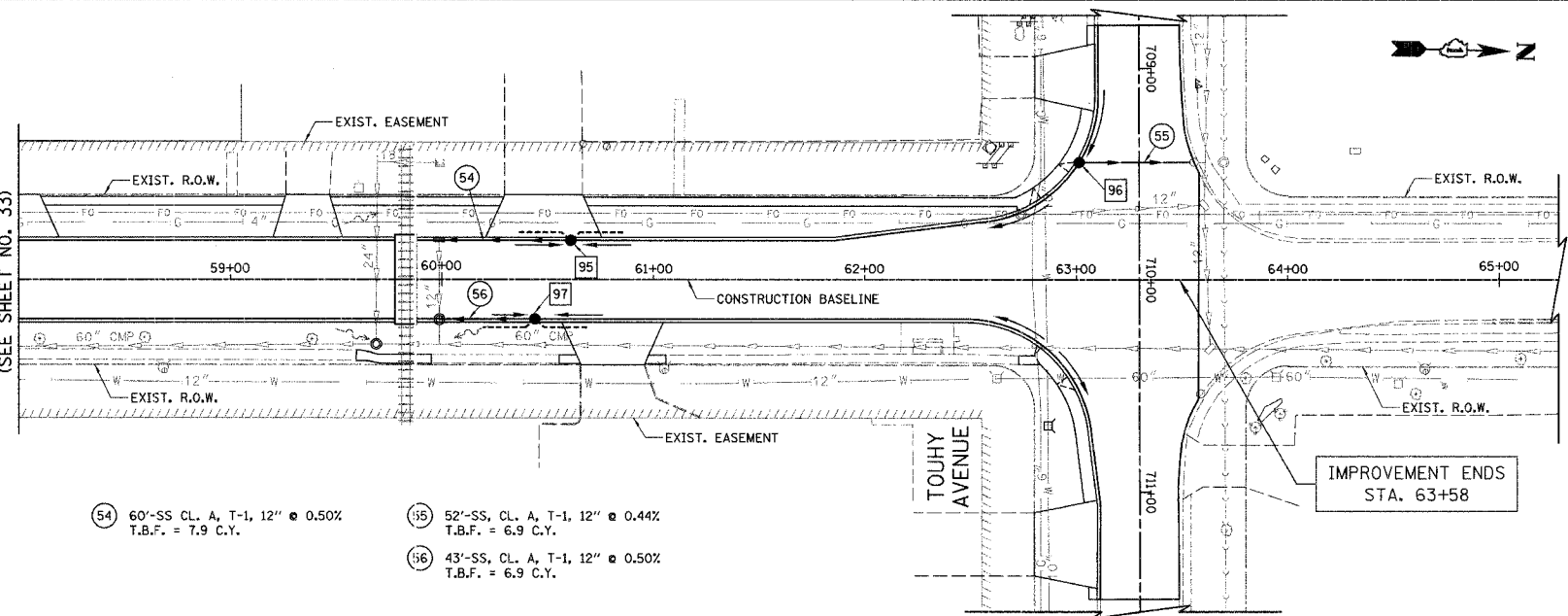
MATCH LINE STA. 58+00
(SEE SHEET NO. 33)



LIVELY BOULEVARD (EXISTING)

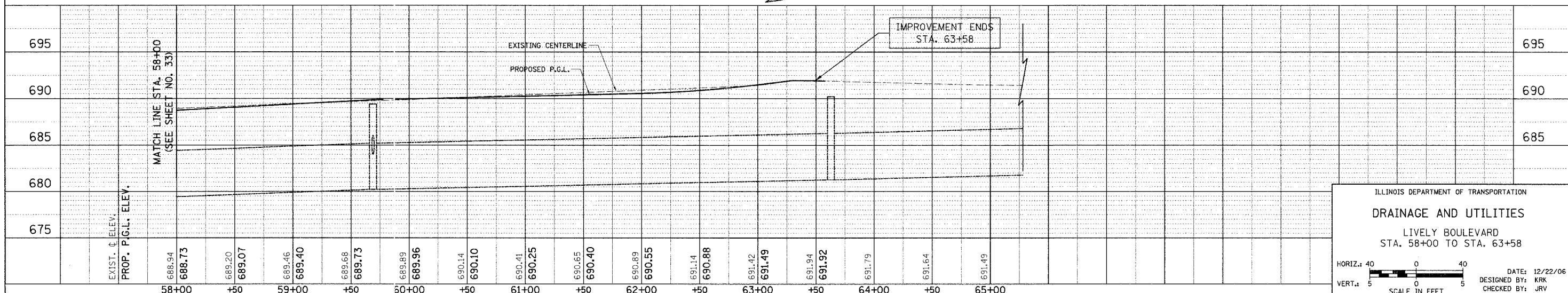
- 95 STA. 60+61.0, 18.5' LT. CB, T-C, T-1 FR. O.L. RIM = 689.77 INV = 686.26 (12" S) INV = 686.77 (4" NW&SW)
- 96 STA. 63+01.45, 55.5' LT. CB, T-C, T-1 FR. O.L. RIM = 691.15 INV = 687.79 (12" NE)
- 97 STA. 60+44, 18.5' RT. CB, T-C, T-1 FR. O.L. RIM = 689.72 INV = 685.72 (12" S) INV = 676.72 (4" NE&SE)

MATCH LINE STA. 58+00
(SEE SHEET NO. 33)



LIVELY BOULEVARD (PROPOSED)

- 54 60'-SS CL. A, T-1, 12" @ 0.50% T.B.F. = 7.9 C.Y.
- 55 52'-SS, CL. A, T-1, 12" @ 0.44% T.B.F. = 6.9 C.Y.
- 56 43'-SS, CL. A, T-1, 12" @ 0.50% T.B.F. = 6.9 C.Y.



ILLINOIS DEPARTMENT OF TRANSPORTATION
DRAINAGE AND UTILITIES
LIVELY BOULEVARD
STA. 58+00 TO STA. 63+58

HORIZ.: 40' = 1" (Scale shown)

VERT.: 5' = 1" (Scale shown)

SCALE IN FEET

DATE: 12/22/06
DESIGNED BY: KRK
CHECKED BY: JRV