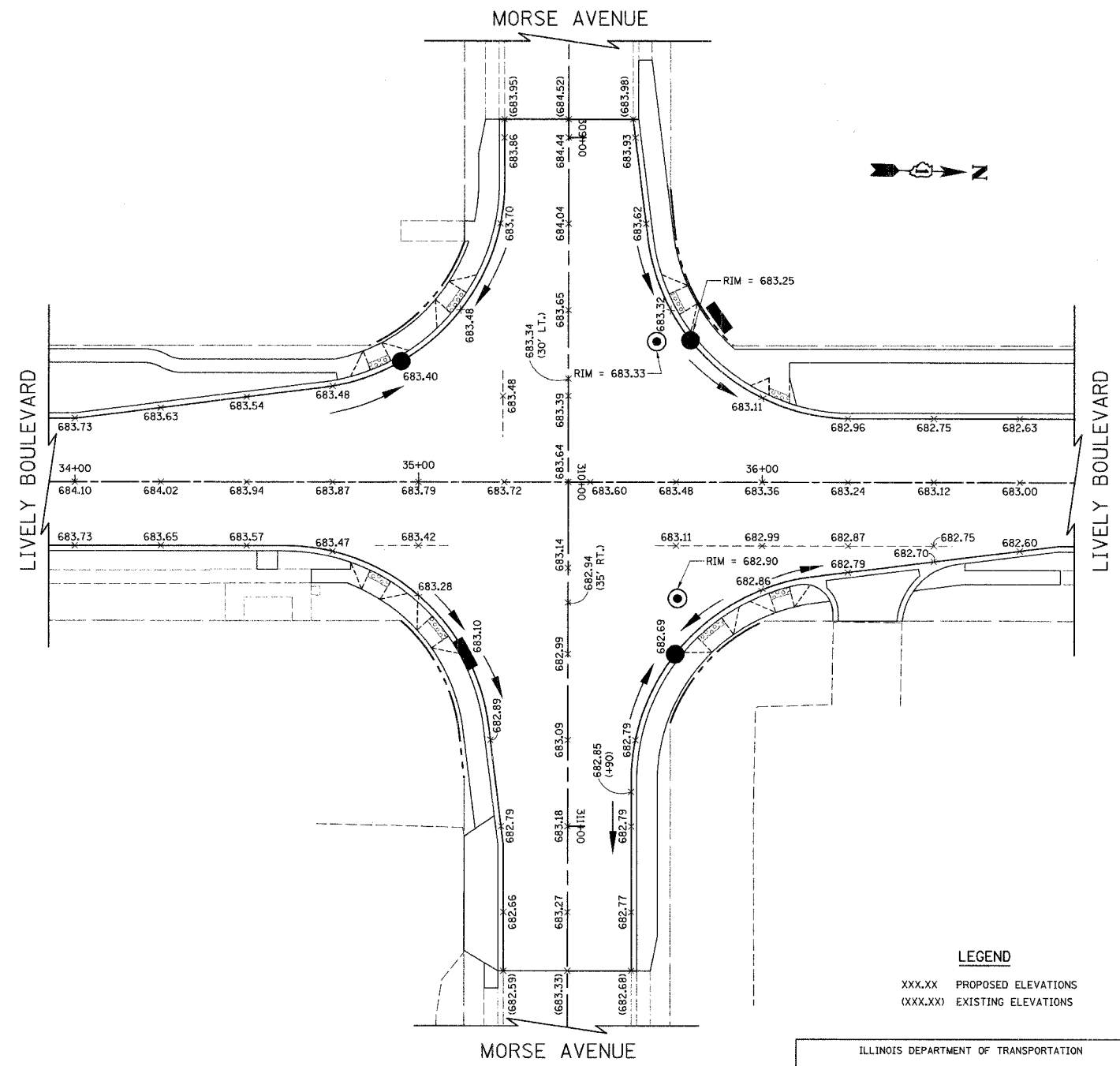
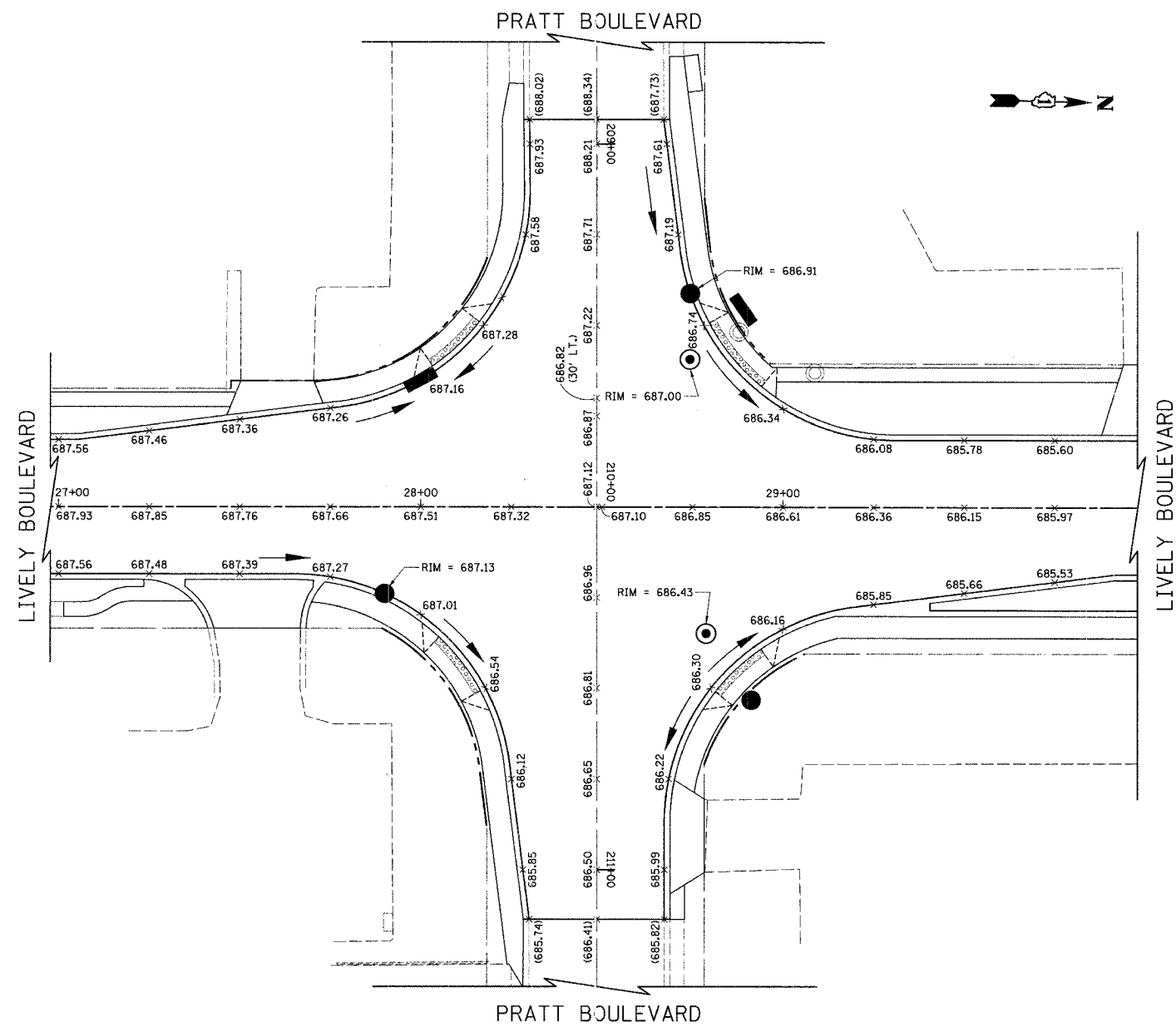


F.A.W. RTE.	SECTION	COUNTY	TOTAL SHEETS	SHEET NO.
1700	05-00045-02-PV	COOK/DUPAGE	103	36
INTERSECTION GRADING PLAN				
FED. ROAD DIST. NO. 7	ILLINOIS	FED. AID PROJECT M-800315441		



LEGEND

- xxx.xx PROPOSED ELEVATIONS
- (xxx.xx) EXISTING ELEVATIONS

ILLINOIS DEPARTMENT OF TRANSPORTATION

INTERSECTION GRADING PLAN

LIVELY BOULEVARD/PRATT BOULEVARD
AND
LIVELY BOULEVARD/MORSE AVENUE

SCALE IN FEET

DATE: 10/18/06
DESIGNED BY: KRK
CHECKED BY: DJK