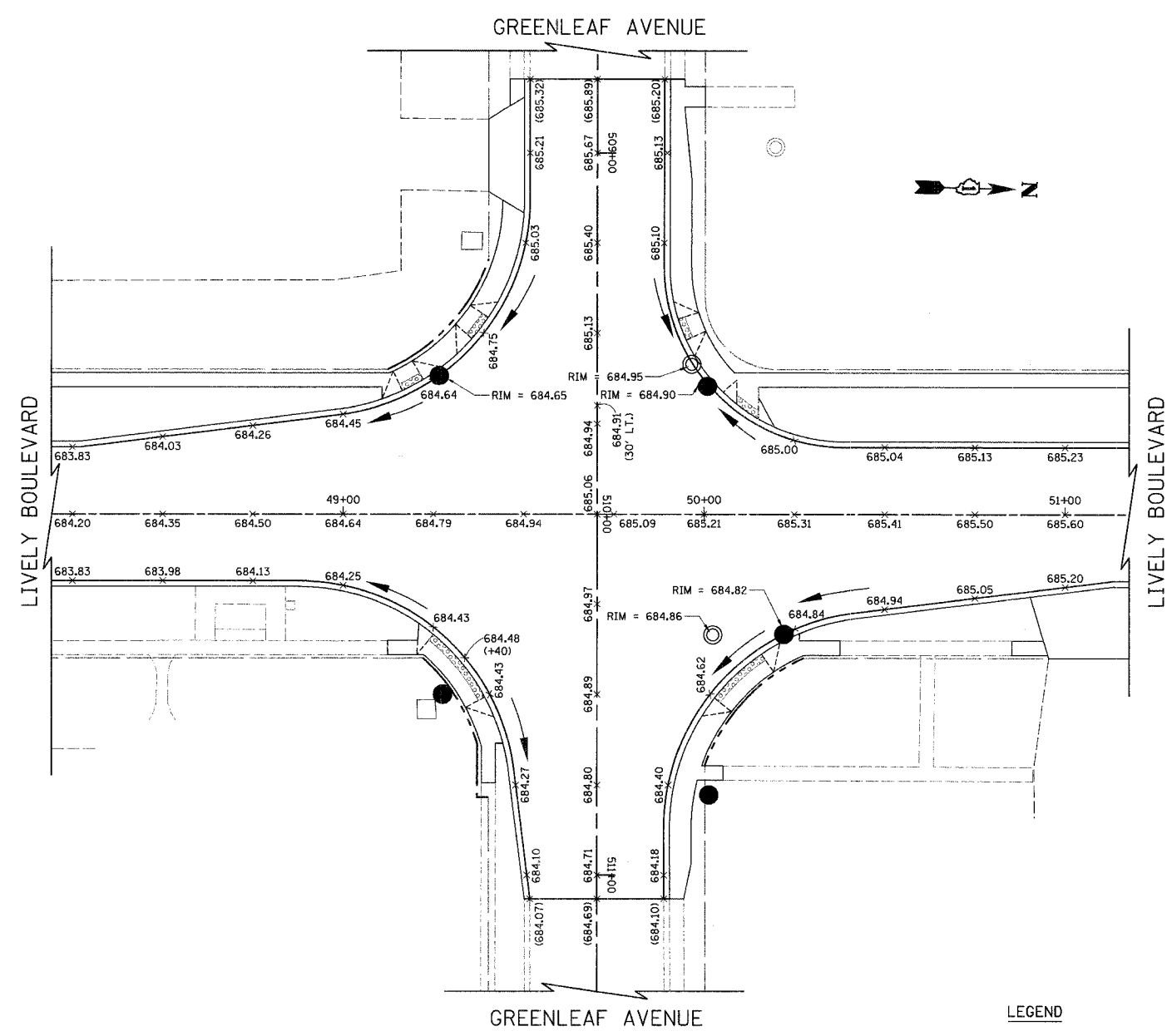
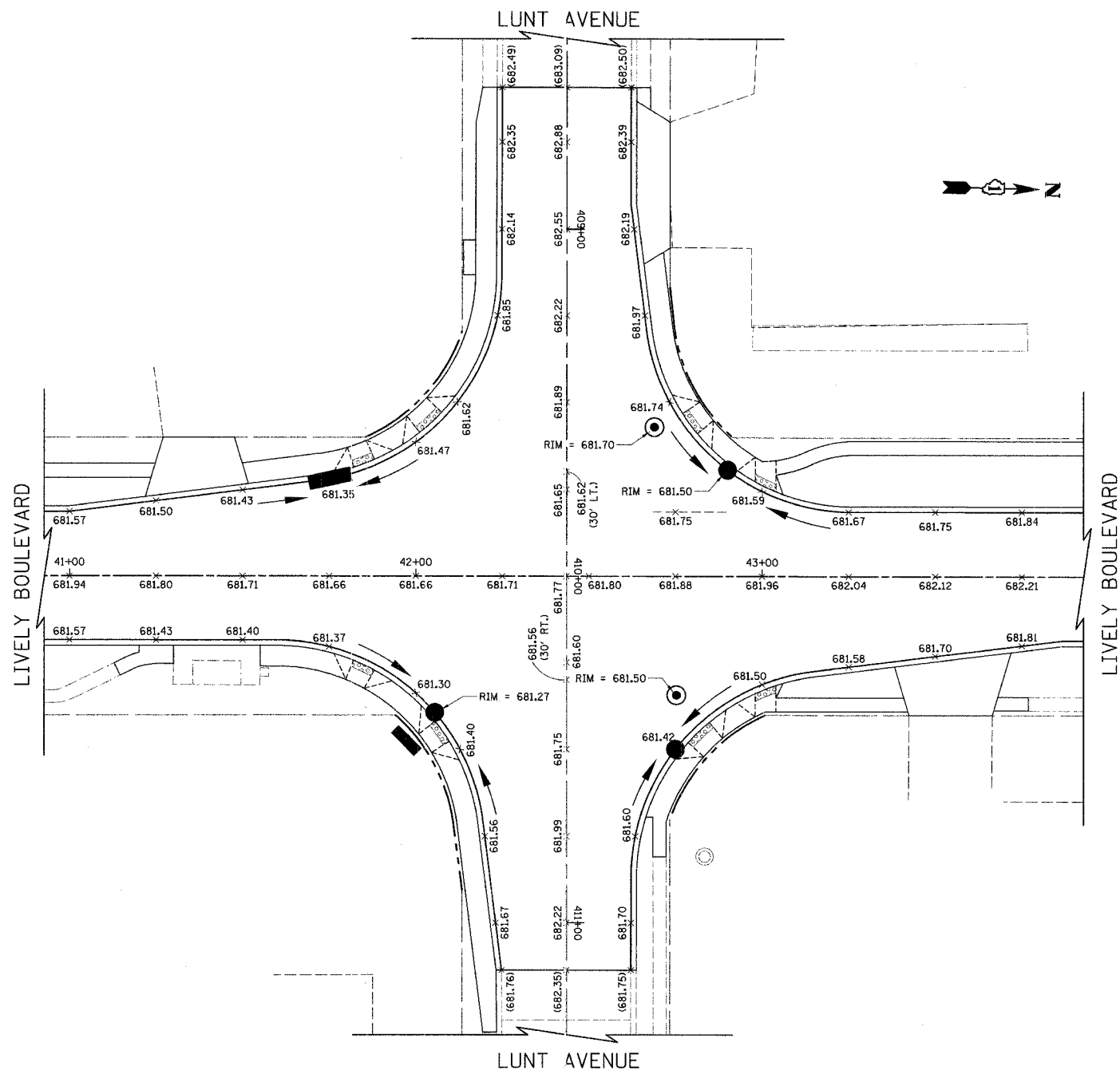


F.A.U. RTE.	SECTION	COUNTY	TOTAL SHEETS	SHEET NO.
1700	05-00045-02-PW	COOK/DUPAGE	103	37
INTERSECTION GRADING PLAN				
FED. ROAD DIST. NO. 7	ILLINOIS	FED. AID PROJECT M-80031544)		



LEGEND

XXX.XX PROPOSED ELEVATIONS
 (XXX.XX) EXISTING ELEVATIONS

ILLINOIS DEPARTMENT OF TRANSPORTATION
INTERSECTION GRADING PLAN
 LIVELY BOULEVARD/LUNT AVENUE
 AND
 LIVELY BOULEVARD/GREENLEAF AVENUE

SCALE IN FEET

DATE: 01/29/07
 DESIGNED BY: KRK
 CHECKED BY: DJK