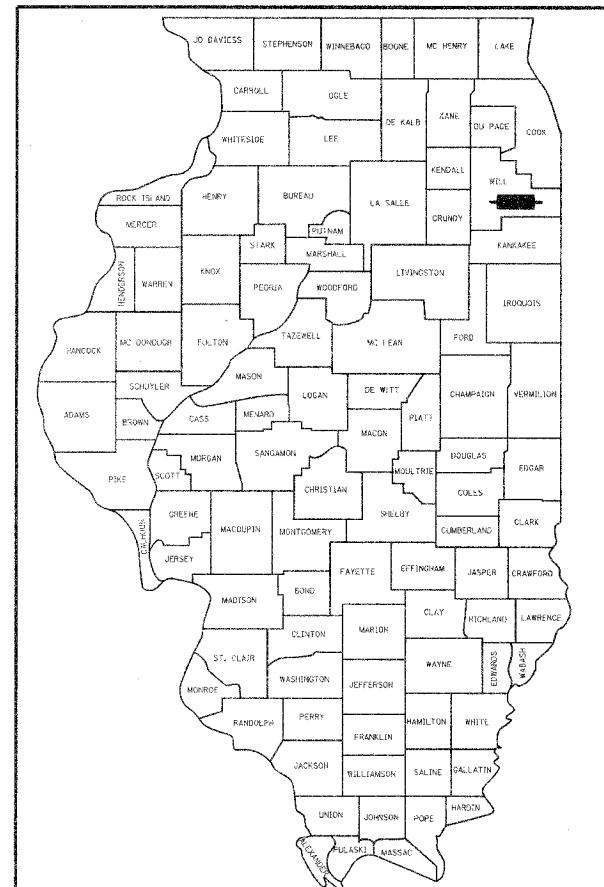


F.A.P. RTE.	SECTION	COUNTY	TOTAL SHEETS	SHEET NO.
532	02-00117-21-BR	WILL	35	1



LOCATION OF SECTION INDICATED THUS: -

# WILL COUNTY DEPARTMENT OF HIGHWAYS PLANS FOR PROPOSED FEDERAL AID HIGHWAY

FAP ROUTE 532  
MANHATTAN-ARSENAL ROAD  
OVER JACKSON CREEK  
SECTION 02-00117-21-BR  
BRIDGE REPLACEMENT AND DITCH GRADING  
PROJECT NO. BRM-8003 (317)  
EXISTING S.N. 099-3304  
PROPOSED S.N. 099-3395

WILL COUNTY, ILLINOIS  
C-91-178-03

**INDEX OF SHEETS**

- 1 COVER SHEET
- 2 GENERAL NOTES, SPECIFICATIONS, & STATE STANDARDS
- 3 SUMMARY OF QUANTITIES
- 4 TYPICAL SECTIONS
- 5 ALIGNMENT, TIES, & BENCHMARKS
- 6 PLAN AND PROFILE
- 7 TEMPORARY DETOUR PLAN
- 8 EROSION CONTROL PLAN
- 9 PAVEMENT MARKING & RESTORATION PLAN
- 10-28 BRIDGE PLANS
- 29 DISTRICT ONE TYPICAL PAVEMENT MARKINGS
- 30 TRAFFIC CONTROL AND PROTECTION FOR SIDE ROADS, INTERSECTIONS, AND DRIVEWAYS AND BENCHING DETAIL FOR EMBANKMENT WIDENING
- 31-35 CROSS SECTIONS

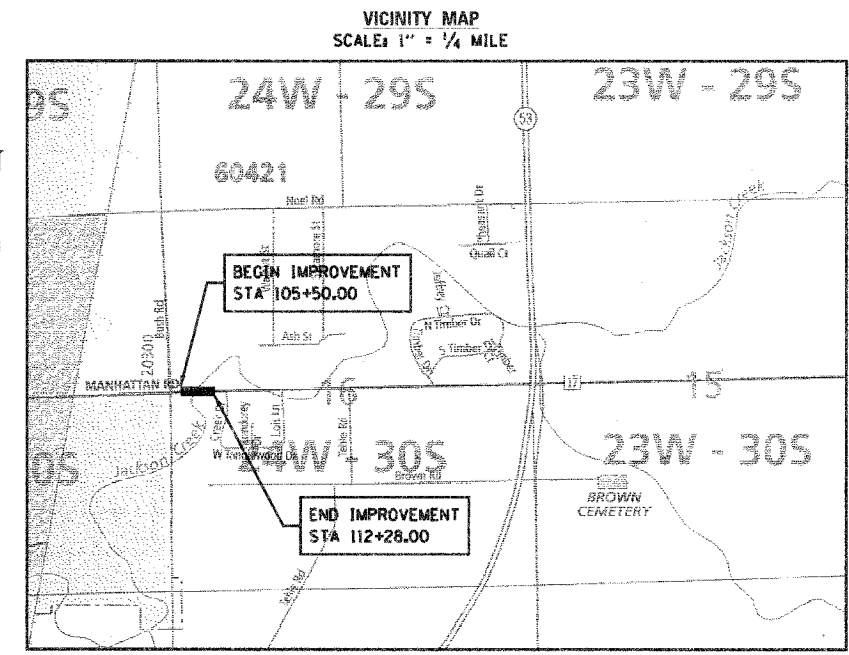
**ENGINEER:**  
SMITH ENGINEERING CONSULTANTS  
A DIVISION OF SEC GROUP, INC.  
4500 PRIME PARKWAY  
MCHENRY, ILLINOIS 60050  
(815) 385-1778  
CONTACT:  
ANDY UNDERWAGER, S.E., P.E. - STRUCTURAL ENGINEER  
T. SCOTT CREECH, P.E. - PROJECT ENGINEER

**SURVEYOR:**  
SMITH ENGINEERING CONSULTANTS  
759 JOHN STREET  
YORKVILLE, ILLINOIS 60560  
(630) 553-7560

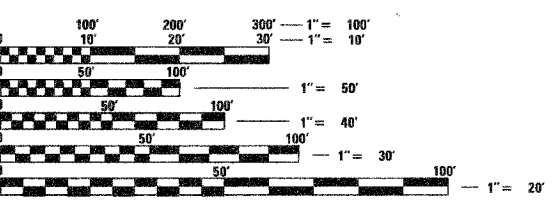
**STRUCTURE INFORMATION:**

EXISTING SN 099-3304:  
EXISTING 3-SPAN STRUCTURE CONSISTS OF PRECAST, PRESTRESSED CONCRETE DECK BEAMS WITH AN OUT-TO-OUT WIDTH OF 36'-0" AND A TOTAL LENGTH OF 140'-0 1/2" BK. TO BK. ABUTMENTS WITH A 45 DEGREE SKEW. THE SUBSTRUCTURE CONSISTS OF CONCRETE ENCASED STEEL PILE BENT PIERS AND ABUTMENTS. STRUCTURE TO BE REMOVED AS SHOWN WITH NO SALVAGE.

PROPOSED SN 099-3395:  
PROPOSED 3-SPAN STRUCTURE CONSISTS OF A CAST IN PLACE CONCRETE DECK ON STEEL WIDE FLANGE BEAMS WITH AN OUT-TO-OUT WIDTH OF 47'-2" AND A TOTAL LENGTH OF 167'-10 1/2" BK. TO BK. ABUTMENTS WITH A 30 DEGREE SKEW. THE SUBSTRUCTURE CONSISTS OF INTEGRAL ABUTMENTS AND CONCRETE ENCASED STEEL PILE BENT PIERS.



NET LENGTH OF IMPROVEMENT = 678 FT. = 0.128 MILES  
GROSS LENGTH OF IMPROVEMENT = 678 FT. = 0.128 MILES  
TOWNSHIP = JACKSON ; T34N, R10E



FULL SIZE PLANS HAVE BEEN PREPARED USING STANDARD ENGINEERING SCALES. REDUCED SIZED PLANS WILL NOT CONFORM TO STANDARD SCALES. IN MAKING MEASUREMENTS ON REDUCED PLANS, THE ABOVE SCALES MAY BE USED.

J.U.L.I.E.  
JOINT UTILITY LOCATION INFORMATION FOR EXCAVATION  
1-800-892-0123

CONTRACT NO. 83885

**STRUCTURAL ENGINEER'S SIGN & SEAL**

*Robert G. Davies*  
ROBERT G. DAVIES, S.E., P.E.  
DATE 12/5/06  
EXPIRES 11/30/08

**FUNCTIONAL CLASSIFICATION**  
OTHER PRINCIPAL ARTERIAL

DESIGN SPEED  
MANHATTAN-ARSENAL: 60 MPH

SPEED LIMIT  
MANHATTAN-ARSENAL: 45 MPH

2004 TRAFFIC DATA:  
MANHATTAN-ARSENAL: ADT = 3300

**PROFESSIONAL ENGINEER'S SIGN & SEAL**

*T. Scott Creech*  
T. SCOTT CREECH, P.E.  
DATE 11/30/07  
EXPIRES

PRINTED BY THE AUTHORITY  
OF THE STATE OF ILLINOIS

WILL COUNTY DEPARTMENT OF HIGHWAYS

APPROVED 12/11/06 (DATE)  
*Sheldon C. Lutz* COUNTY ENGINEER  
LOCAL AGENCY, POSITION

PASSED JANUARY 3 2007 (DATE)  
*Christopher Holt* DISTRICT 1 ENGINEER OF LOCAL ROADS & STREETS

RELEASING FOR BID  
BASED ON LIMITED  
REVIEW JANUARY 3 2007 (DATE)  
*Diane O'Keefe* DEPUTY DIRECTOR OF HIGHWAYS, REGION 1 ENGINEER

FEDERAL AID DESIGN ENGINEER: JESSICA FELICIANO (847) 705-4487