

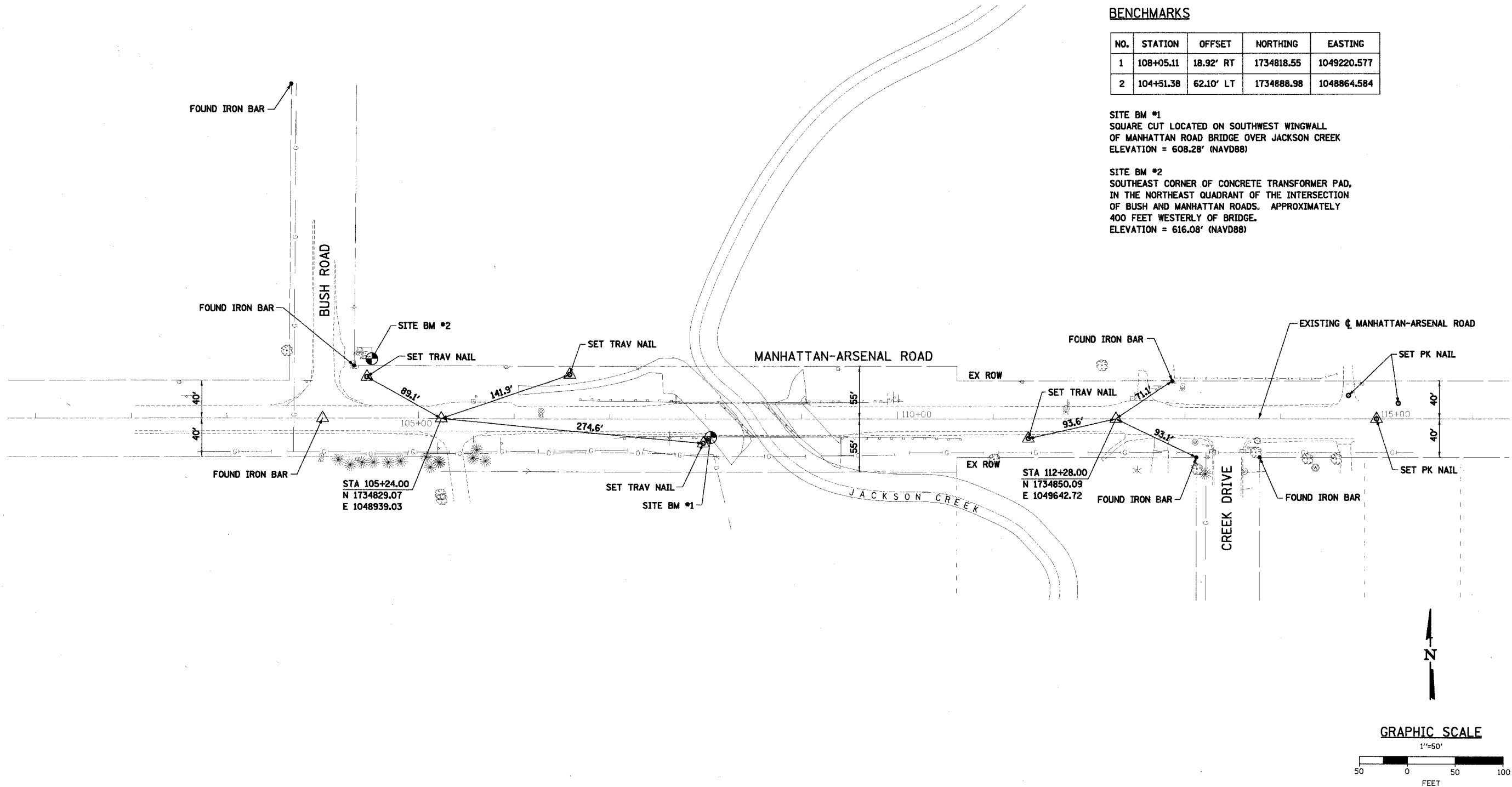
F.A. RTE.	SECTION	COUNTY	TOTAL SHEETS	SHEET NO.
532	02-00117-21-BR	WILL	35	5
STA.		TO STA.		
FED. ROAD DIST. NO. 1		ILLINOIS	FED. AID PROJECT	

**BENCHMARKS**

NO.	STATION	OFFSET	NORTHING	EASTING
1	108+05.11	18.92' RT	1734818.55	1049220.577
2	104+51.38	62.10' LT	1734688.98	1048864.584

SITE BM #1  
 SQUARE CUT LOCATED ON SOUTHWEST WINGWALL  
 OF MANHATTAN ROAD BRIDGE OVER JACKSON CREEK  
 ELEVATION = 608.28' (NAVD88)

SITE BM #2  
 SOUTHEAST CORNER OF CONCRETE TRANSFORMER PAD,  
 IN THE NORTHEAST QUADRANT OF THE INTERSECTION  
 OF BUSH AND MANHATTAN ROADS. APPROXIMATELY  
 400 FEET WESTERLY OF BRIDGE.  
 ELEVATION = 616.08' (NAVD88)



COMPANY NAME: SEC, INC.  
 PROJECT: CONTRACT 1, SOUTT CREECH  
 DATE: 12/2/2006 12:56:16 PM  
 FILE: V:\Jobs\2144\4488\95\95.dwg  
 SEC PROJ. NO.: 83885

REVISIONS		WILL COUNTY DEPARTMENT OF HIGHWAYS	
NAME	DATE		

**ALIGNMENT, TIES,  
& BENCHMARKS**

**MANHATTAN-ARSENAL ROAD  
OVER JACKSON CREEK**

SCALE: 1"=50' DRAWN BY SVJ  
 DATE 12-08-06 CHECKED BY JJS