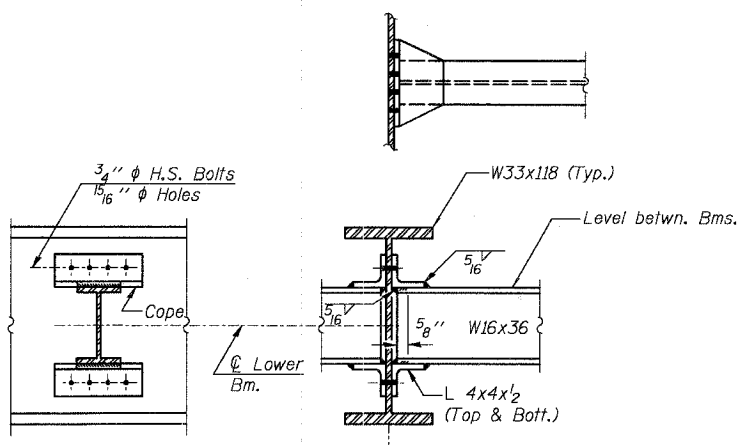
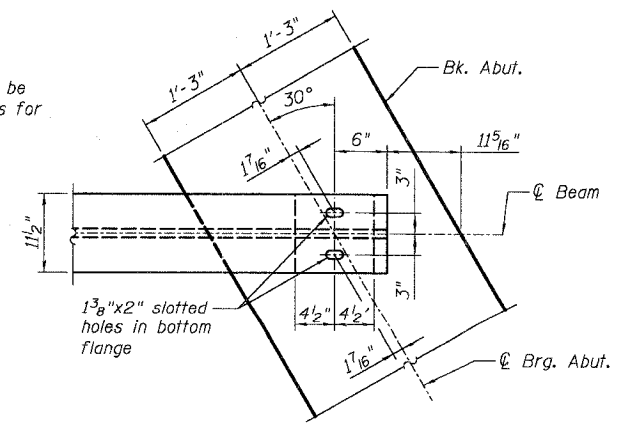


TYPICAL BEAM ELEVATION
 "NTR" denotes beams to which Notch Toughness Requirements are applicable

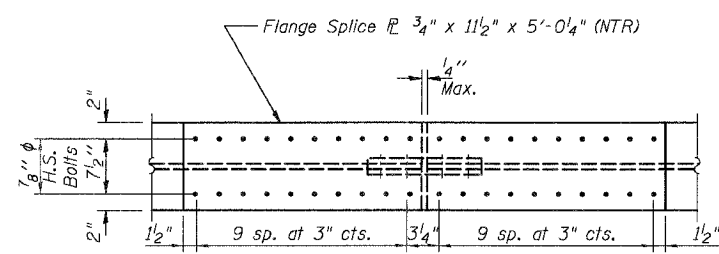


DIAPHRAGM D
 (40 Required)

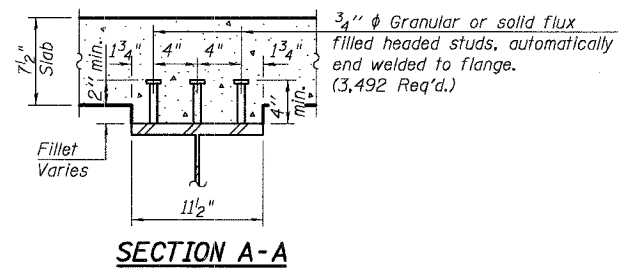
Note:
 Two hardened washers shall be required over all oversize holes for diaphragms.



PLAN AT ABUTMENTS



FIELD SPLICE DETAIL
 (12 Required)



SECTION A-A

BILL OF MATERIAL

Item	Unit	Quantity
Furnishing & Erecting Structural Steel	L. Sum	1
Stud Shear Connectors	Each	3,492

Notes:
 Work this Sheet with Sheets S-9 & S-11.
 All splice material shall be M270 Grade 50.

DESIGNED	KMA
CHECKED	AEU
DRAWN	MDJ
CHECKED	RGD

SEC GROUP, INC.
 Illinois Professional Design Firm # 164-000108
 Smith Engineering Consultants - SEC Automation - SEC Planning
 4800 Peoria Parkway, Mokena, IL 60050
 1-815-565-1775 • 815-565-1781
 www.secgroupinc.com engineering@secgroupinc.com

WILL COUNTY DEPARTMENT OF HIGHWAYS
 STRUCTURAL STEEL DETAILS
 MANHATTAN-ARSENAL ROAD
 OVER JACKSON CREEK
 WILL COUNTY
 SECTION NO. 02-00117-21-BR
 STRUCTURE NO. 099-3395
 DATE 12-8-2006

CONTRACT NO. 02-00117-21-BR
 PROJECT CONTRACT: BRIDGE CONTRACT
 DATE: 12/8/06
 DRAWN BY: MDJ
 CHECKED BY: RGD
 DESIGNED BY: KMA
 PROJECT NO: 02-00117-21-BR
 SHEET NO: S-19