

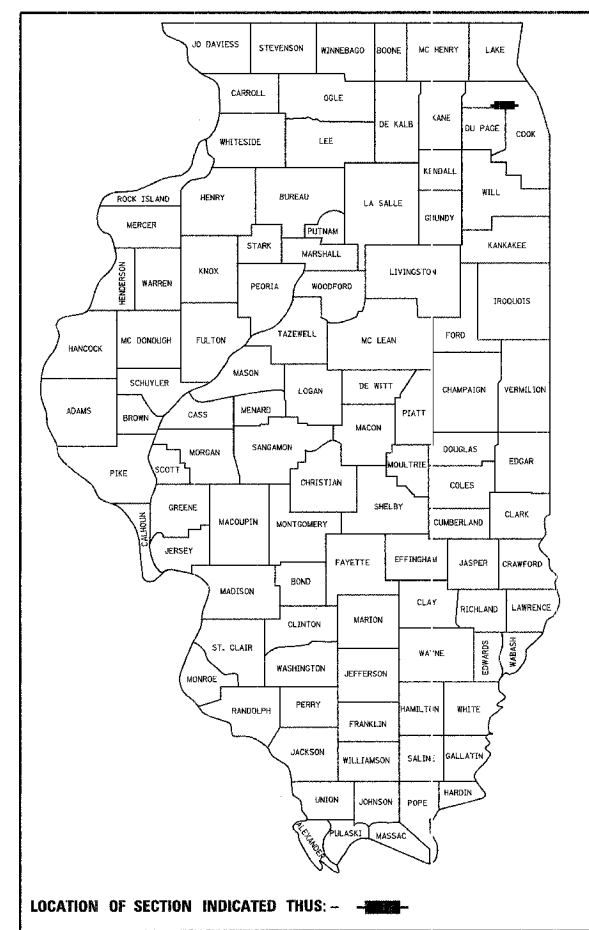
CONTRACT NO. 83893				
F.A.U. RTE.	SECTION	COUNTY	TOTAL SHEETS	SHEET NO.
	06-00051-00-MS	COOK/DUPAGE	14	1
COVER SHEET				
FED. ROAD DIST. NO. 7 ILLINOIS FED. AID PROJECT M-8003(658)				

STATE OF ILLINOIS
DEPARTMENT OF TRANSPORTATION
DIVISION OF HIGHWAYS

PLANS FOR PROPOSED FEDERAL AID PROJECT

T.C.M. BUS SHELTER IMPROVEMENTS
VARIOUS LOCATIONS
SECTION 06-00051-00-MS

PROJECT NO. M-8003(658)
BUS SHELTER AND LANDSCAPING INSTALLATION
COOK AND DUPAGE COUNTIES
C-91-429-06

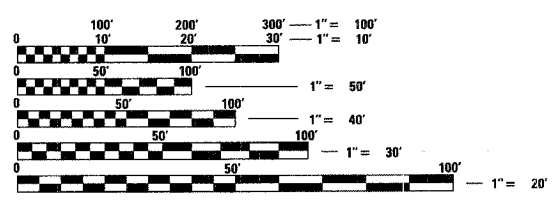
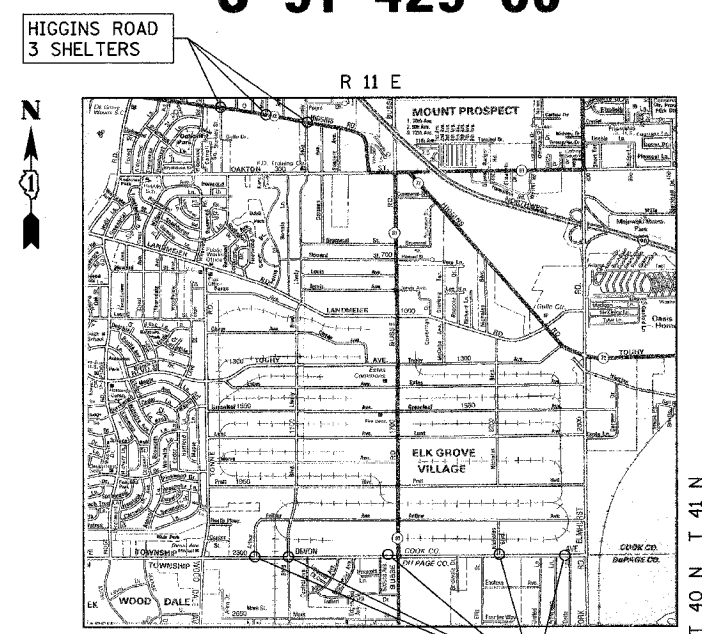


INDEX OF SHEETS

SHEET NO.	DESCRIPTION
1	COVER SHEET
2-3	GENERAL NOTES
4	SUMMARY OF QUANTITIES
5	TYPICAL SECTIONS
6-13	PLAN SHEETS
14	DETAILS

IDOT STANDARDS

000001-04	STANDARD SYMBOLS, ABBREVIATIONS, AND PATTERNS
424001-04	CURB RAMPS FOR SIDEWALKS
602001	CATCH BASIN TYPE C
604036-01	GRATE TYPE B
701602-02	URBAN LANE CLOSURE, MULTILANE, 2W WITH BIDIRECTIONAL LEFT TURN LANE
701701-04	URBAN LANE CLOSURE, MULTILANE INTERSECTION
701801-03	LANE CLOSURE MULTILANE, 1W OR 2W CROSSWALK OR SIDEWALK CLOSURE
702001-06	TRAFFIC CONTROL DEVICES
720001	SIGN PANEL MOUNTING DETAILS
720006-01	SIGN PANEL ERECTION DETAILS
728001	TELESCOPING STEEL SIGN SUPPORT



FULL SIZE PLANS HAVE BEEN PREPARED USING STANDARD ENGINEERING SCALES. REDUCED SIZED PLANS WILL NOT CONFORM TO STANDARD SCALES. IN MAKING MEASUREMENTS ON REDUCED PLANS, THE ABOVE SCALES MAY BE USED.

J.U.I.E.
JOINT UTILITY LOCATION INFORMATION FOR EXCAVATION
1-800-892-0123

CONTRACT NO. 83893

THE "STANDARD SPECIFICATIONS FOR ROAD AND BRIDGE CONSTRUCTION", ADOPTED JANUARY 1, 2007 BY THE ILLINOIS DEPARTMENT OF TRANSPORTATION, SHALL GOVERN THIS WORK.

GROSS & NET LENGTH: NOT APPLICABLE

STATE OF ILLINOIS
DEPARTMENT OF TRANSPORTATION
DIVISION OF HIGHWAYS

APPROVED NOVEMBER 28 20 06
Alan F. D'Amico
ELK GROVE VILLAGE, DIRECTOR OF ENGINEERING AND COMMUNITY DEVELOPMENT

PASSED DECEMBER 28 20 06
Chris Helt
DISTRICT ONE ENGINEER OF LOCAL ROADS & STREETS

RELEASING FOR BID
BASED ON LIMITED
REVIEW December 29 20 06
Drane O'Keefe
DEPUTY DIRECTOR OF HIGHWAYS, REGION ONE ENGINEER



David J. Kreeger 11-27-06 11-30-07
REGISTERED P.E., STATE OF ILLINOIS EXPIRES

PLANS PREPARED BY:
CIVILTECH
450 E. Devon Ave., Suite 300 - Itasca, Illinois 60143
Tel: 630.773.3900 - Fax: 630.773.3975
www.civiltechinc.com

PRINTED BY THE AUTHORITY OF THE STATE OF ILLINOIS

FEDERAL AID ENGINEER: ABIGAIL WILGREEN 847-705-4233 SCHALMBURG, IL
CONSULTANT ENGINEER: DAVID KREEGER, P.E. CIVILTECH ENGINEERING, INC.