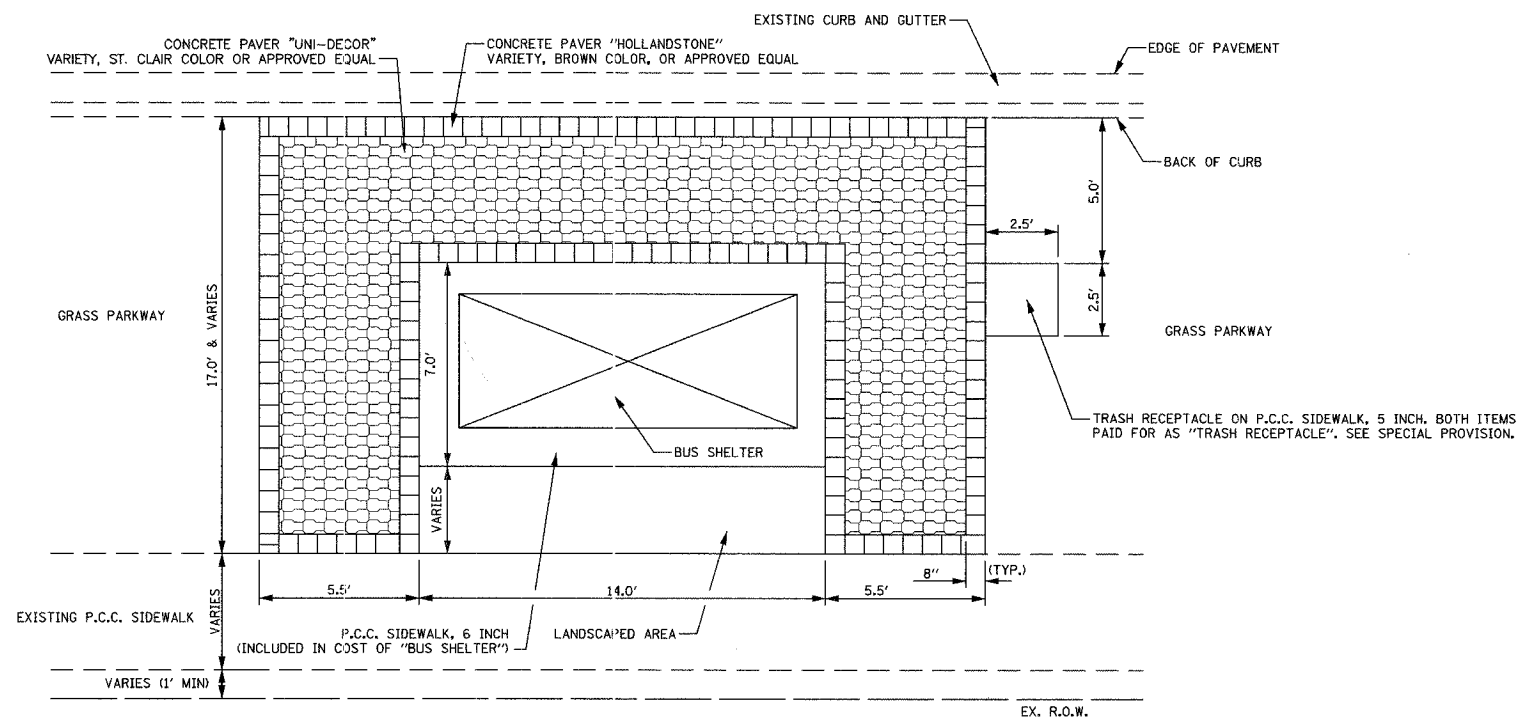
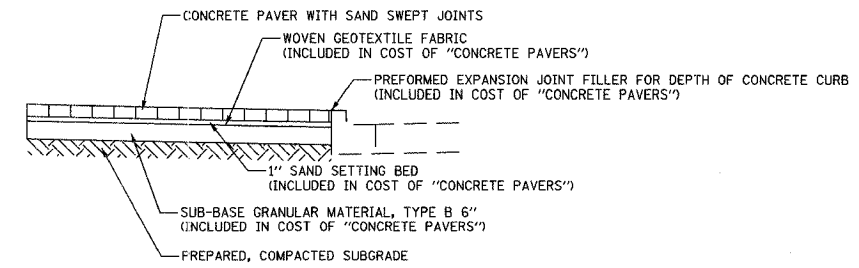


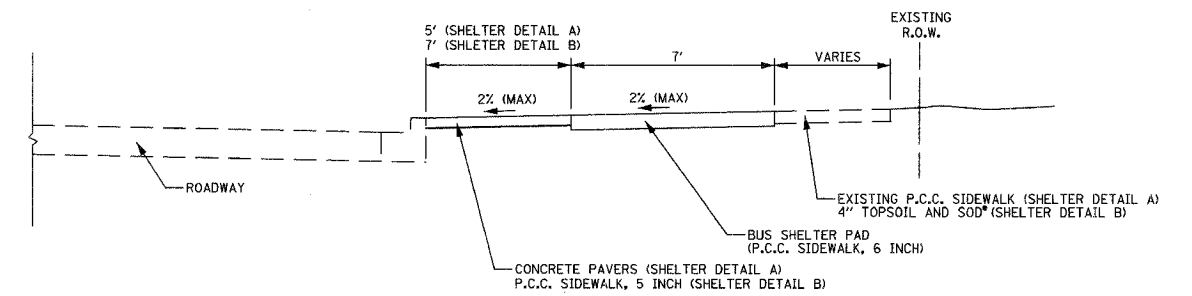
F.A.U. RTE.	SECTION	COUNTY	TOTAL SHEETS	SHEET NO.
06-00051-00-MS	COOK/DUPAGE		14	5
TYPICAL SECTIONS				
FED. ROAD DIST. NO. 7 ILLINOIS FED. AID PROJECT M-8003658				



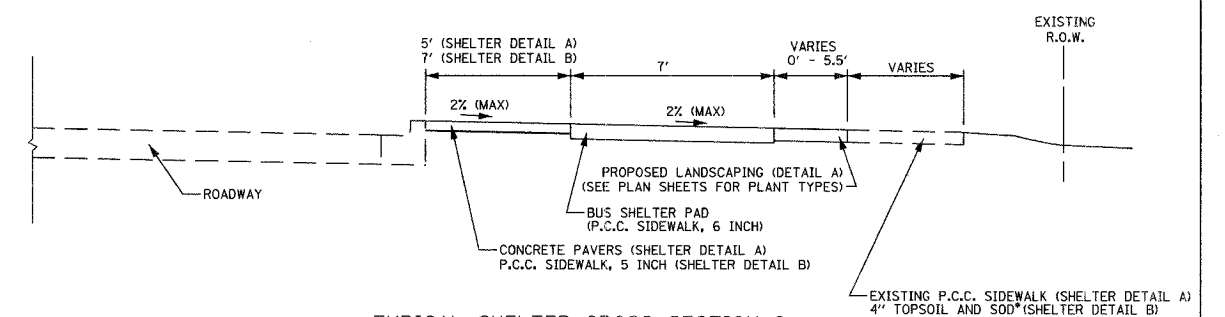
TYPICAL SHELTER DETAIL A
SIDEWALK LOCATED AT RIGHT OF WAY



CONCRETE PAVER DETAIL

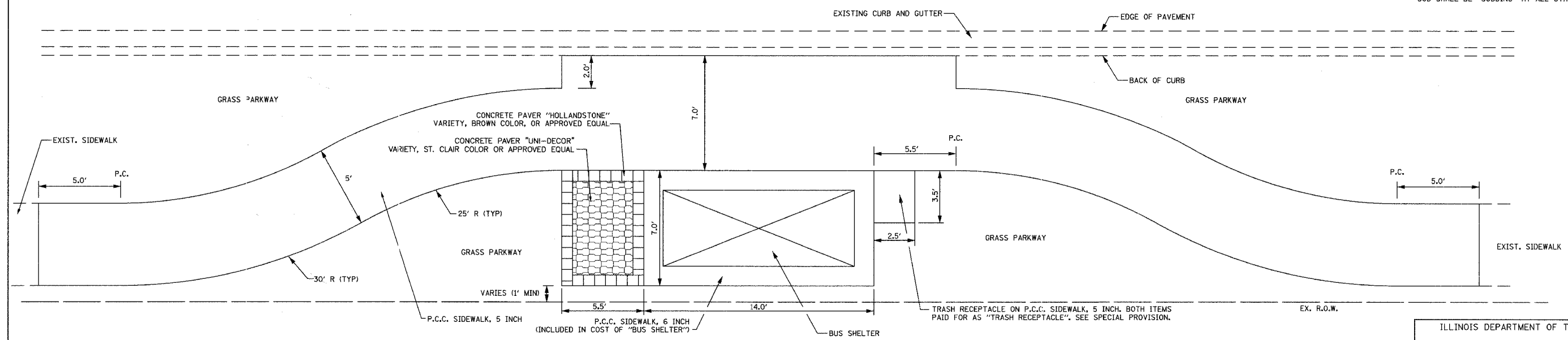


TYPICAL SHELTER CROSS SECTION 1



TYPICAL SHELTER CROSS SECTION 2

*SOD SHALL BE "SODDING, SALT TOLERANT" ON HIGGINS ROAD
SOD SHALL BE "SODDING" AT ALL OTHER LOCATIONS



TYPICAL SHELTER DETAIL B
PROPOSED SIDEWALK LOCATED AT EXISTING BACK OF CURB

ILLINOIS DEPARTMENT OF TRANSPORTATION

TYPICAL SECTIONS

DATE: 12/1/06
DESIGNED BY: DJK
CHECKED BY: JRV

NOT TO SCALE