

FAB. FILE	SECTION	COUNTY	TOTAL SHEETS	SHEET NO.
178	03-00287-00-BR	LEE	15	2
STA. 11+75		TO STA. 21+60		
FED. ROAD DIST. NO.		BLMOS	FED. AID PROJECT	

GENERAL NOTES

Existing Structures (Including Foundations, Walls, Cisterns, Wells Or Other Underground Structures) Within The Right Of Way Shall Be Removed In Accordance With Article 501.02 And 501.03 Of The Standard Specifications, Without Additional Compensation, Unless Otherwise Noted In The Plans Or Special Provisions.

The Contractor Shall Seed All Disturbed Areas Within The Project Limits.

No Overhaul Has Been Computed And None Shall Be Paid For From Any Source.

The Final Top Four Inches Of Soil In Any Right-Of-Way Area Disturbed By The Contractor Must Be A Cohesive Soil Capable Of Supporting Vegetation.

The New Number For This Structure Will Be S.N. 052-6200.

The Contractor Shall Be Responsible For Protecting Utility Property During Construction Operations As Outlined In Article 107.31 Of The Standard Specifications.

The Utilities Located Within The Project Limits Or Immediately Adjacent To The Project Construction Limits Include:

Camed
123 Energy Ave.
Rockford, IL. 61109
Attn: CDC Dept.
(815) 490-2320 or 490-3929

Water & Sanitary Sewer
Village of Paw Paw
362 Chicago Road
P.O. Box 426
Paw Paw, IL. 61353
Attn: Larry Thompson

NICOR Gas
4651 Linden Road
Rockford, IL. 61109
(815) 965-5416

Verizon
112 West Elm
Sycamore, IL. 60178
Attn: Engineering Group

Heartland Cable, Inc.
167 West 5th
Mfonk, IL. 61760
(309) 432-2075

A Minimum Of 48 Hours Advance Notice Is Required For Non-Emergency Work.

A Nationwide 404 Permit Has Been Issued For This Project And The Conditions Of That Permit Must Be Adhered To.

When Mulch With Emulsified Asphalt Is Applied, It Will Be The Contractor's Responsibility To Cover Or Protect All Traffic Signs, Guardrail And Curbs. Any Signs, Guardrail Or Curbs Which Become Covered With Asphaltic Material Shall Be Cleaned By The Contractor At His Own Expense.

Where Section Or Subsection Monuments Are Encountered, The Engineer Shall Be Notified Before Such Monuments Are Removed. The Contractor Shall Protect And Carefully Preserve All Property Markers, Monuments And Right-Of-Way Pins Until The Owner, An Authorized Surveyor, Or Agent Has Witnessed Or Otherwise Referenced Their Location.

Existing Mail Boxes, Street Signs And Traffic Signs That Are Within The Construction Limits Shall Be Removed And Reset By The Contractor. Cost Of Removing And Resetting To Be Included In The Contract Unit Price Bid Per Cubic Yard For Earth Excavation (Special).

Bituminous Concrete Removal Not On A Rigid Pavement Shall Be Incidental To Earth Excavation (Special).

PAVEMENT STRUCTURAL DESIGN - PERU STREET

STRUCTURAL DESIGN TRAFFIC (S.D.T.) = YEAR 2016

CLASS III STREET

80,000* TRUCK DESIGN

ERI : (ASSUMED) 2 ksi

TF = 0.32

HMA MIX TEMP. 78.2°F

HMA Fat = 530 ksi

HMA DESIGN STRAIN 203 microstrain

P.V. 1494
S.U. 116
M.U. 50

1660 ADT

USE

STA. 19+00 TO 21+00
2" - HOT-MIX ASPHALT SURFACE COURSE, MIX "C", N50
4 1/2" - HOT-MIX ASPHALT BINDER COURSE, IL 19.0, N50
12" AGGREGATE BASE, TYPE B

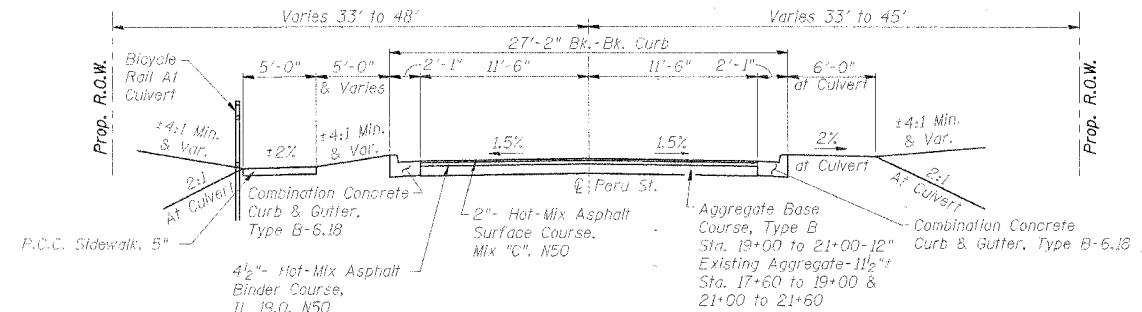
STA. 11+75 TO 19+00 & 21+00 TO 21+60
2" - HOT-MIX ASPHALT SURFACE COURSE, MIX "C", N50
4 1/2" - HOT-MIX ASPHALT BINDER COURSE, IL 19.0, N50
11 1/2" ± EXISTING AGGREGATE BASE

PAVEMENT MIXTURE REQUIREMENTS

	CONSTRUCTION	
	BINDER	SURFACE
PG:	PG 64-28	PG 64-28
RAP % (MAX)	15	15
DESIGN AIR VOIDS	3.0 @ N50	3.0 @ N50
MIXTURE COMPOSITION (GRADATION MIXTURE)	IL 19.0	IL 12.5 or 9.5
FRICITION AGGREGATE	N/A	C

PAW PAW - PERU STREET HORIZONTAL CONTROL POINTS						
POINT #	STATION	O/S	ROAD	NORTH	EAST	DESCRIPTION
100	17+14.58	18.61' R	PERU ST.	1,829,493.44	2,620,504.05	PK IN INTERSECTION
101	21+84.86	17.68' L	PERU ST.	1,829,852.94	2,620,409.72	IRON PIN
102	24+46.85	20.24' L	PERU ST.	1,830,215.98	2,620,379.91	PK IN INTERSECTION

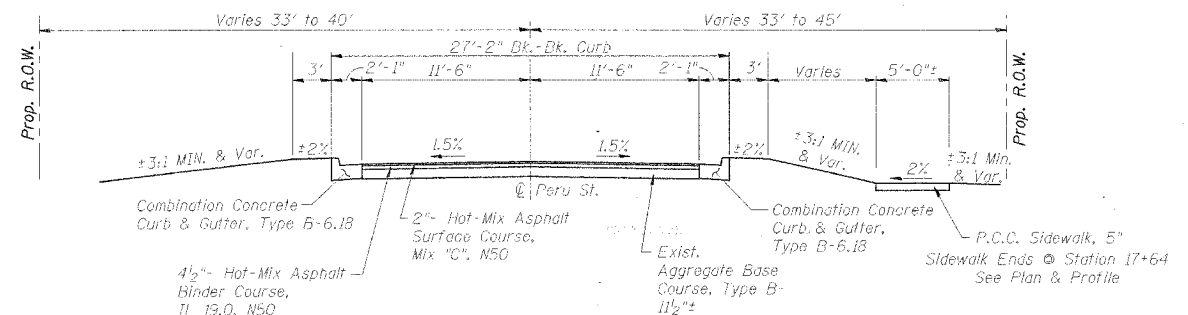
PAW PAW - PERU STREET VERTICAL BENCH MARKS						
STATION	O/S	ROAD	ELEV	DESCRIPTION		
16+96	26.36' L	PERU ST.	922.76	"M" IN MUELLER ON FIRE HYDRANT		
19+69	34.39' L	PERU ST.	909.17	CHIS. SQUARE ON SW WINGWALL OF EX. BRIDGE		
22+32	18.14' L	PERU ST.	919.32	RR SPIKE IN 3RD PP NORTH OF EX. BRIDGE		



PROPOSED TYPICAL SECTION

(Looking Upstation)
Sta. 17+60 to Sta. 21+60

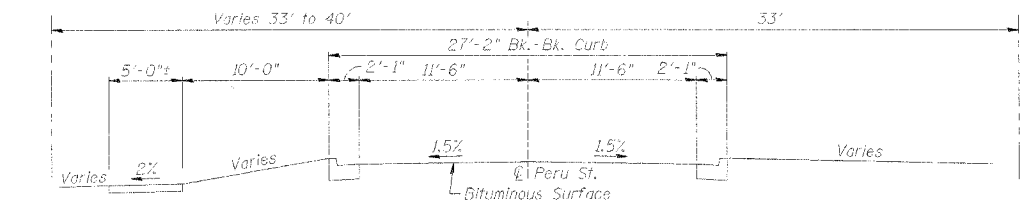
NOTE:
Binder shall be Placed in Two Lifts and Surface shall be Placed in One Lift.



PROPOSED TYPICAL SECTION

(Looking Upstation)
Sta. 11+75 to Sta. 17+60

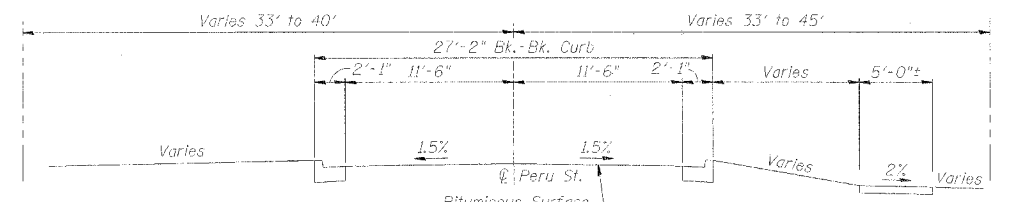
NOTE:
Binder shall be Placed in Two Lifts and Surface shall be Placed in One Lift.



EXISTING TYPICAL SECTION

(Looking Upstation)
Sta. 17+00 to Sta. 21+60

Sidewalk Begins @ Station 17+56
See Plan & Profile

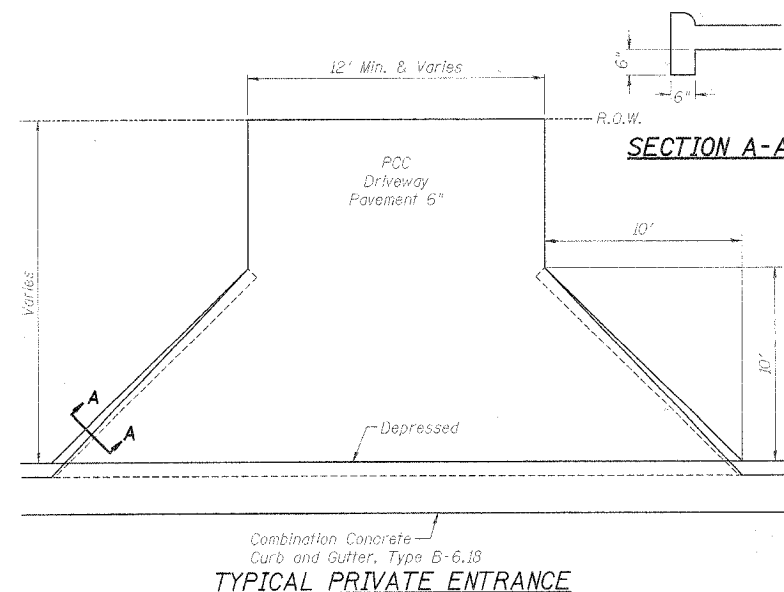


EXISTING TYPICAL SECTION

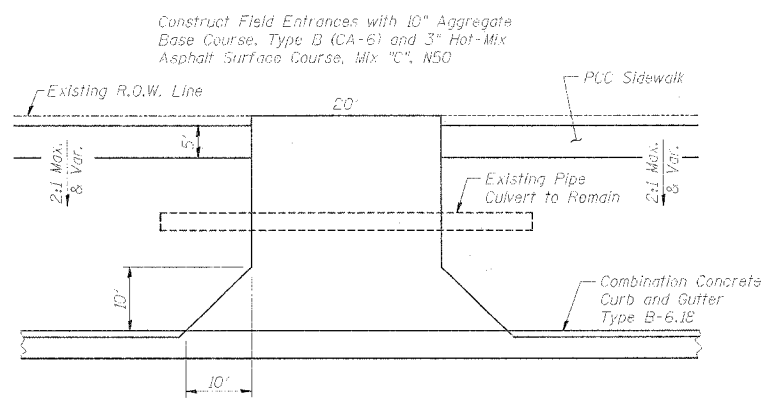
(Looking Upstation)
Sta. 11+75 to Sta. 17+00

Sidewalk Ends @ Station 16+71
See Plan & Profile

GENERAL NOTES, TYPICAL SECTIONS,
AND STANDARD DRAWINGS
PERU STREET OVER BR. OF PAW PAW RUN
SECTION 03-00287-00-BR
STA. 19+96 (S.N. 052-6200)
LEE COUNTY
WHA # 1231003



TYPICAL PRIVATE ENTRANCE



TYPICAL FIELD ENTRANCE

Sta. Rt. 12+45