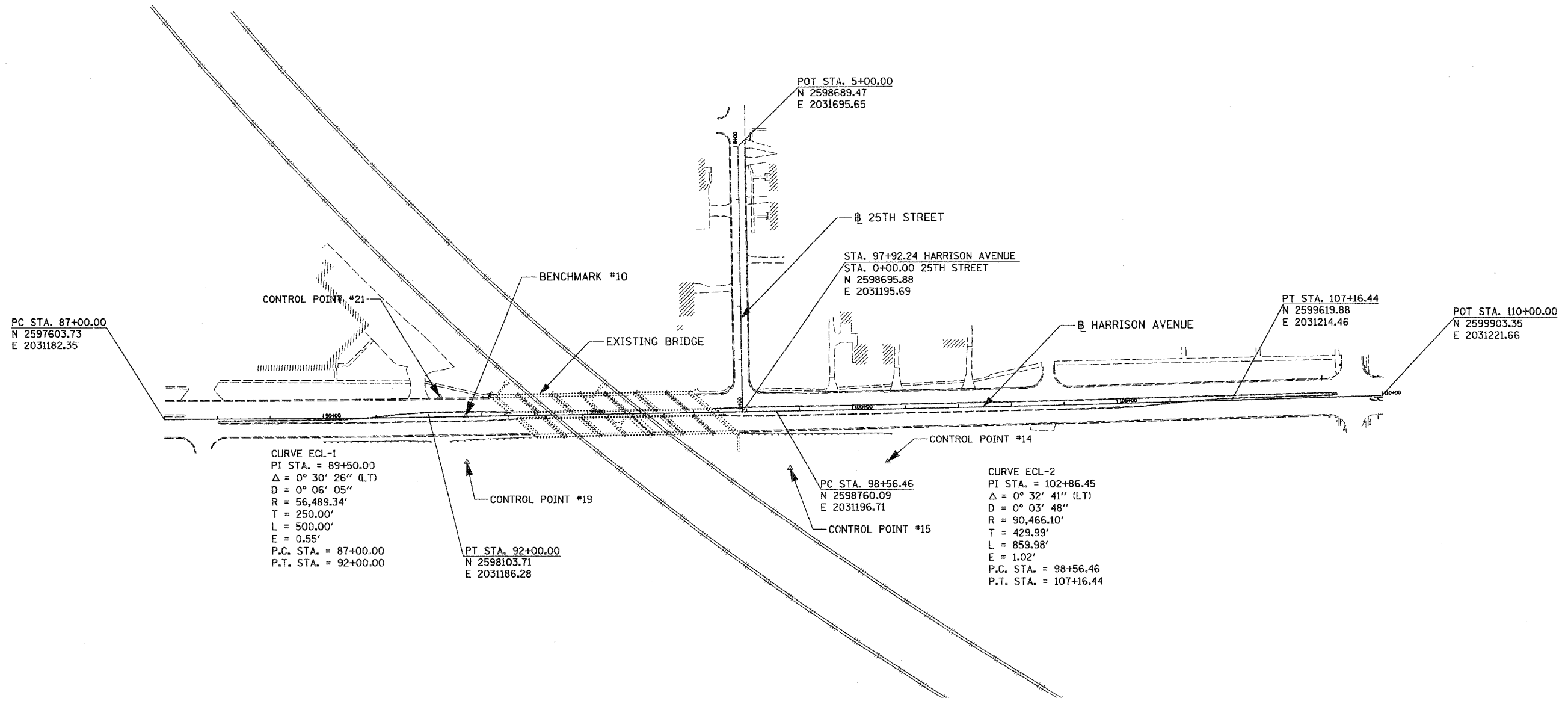


F.A.P. RTE.	SECTION	COUNTY	TOTAL SHEETS	SHEET NO.
525	02-00518-00-BR	WINNEBAGO	157	20
STA. 87+00		TO STA. 110+00		
FED. ROAD DIST. NO.	ILLINOIS	FED. AID PROJECT		



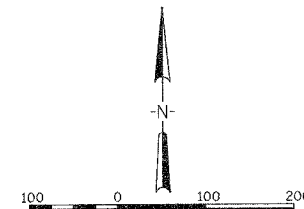
CURVE ECL-1
 PI STA. = 89+50.00
 $\Delta = 0^\circ 30' 26''$ (LT)
 $D = 0^\circ 06' 05''$
 $R = 56,489.34'$
 $T = 250.00'$
 $L = 500.00'$
 $E = 0.55'$
 P.C. STA. = 87+00.00
 P.T. STA. = 92+00.00

CURVE ECL-2
 PI STA. = 102+86.45
 $\Delta = 0^\circ 32' 41''$ (LT)
 $D = 0^\circ 03' 48''$
 $R = 90,466.10'$
 $T = 429.99'$
 $L = 859.98'$
 $E = 1.02'$
 P.C. STA. = 98+56.46
 P.T. STA. = 107+16.44

BENCHMARKS				
B.M. #	STATION	OFFSET	DESCRIPTION	ELEVATION
B.M. #10	92+69.54	0.68' LT	CUT "X" IN MEDIAN	796.63

CONTROL POINTS			
POINT #	NORTHING	EASTING	DESCRIPTION
CP #14	2598969.402	2031100.894	IRON PIN
CP #15	2598785.528	2031089.084	IRON PIN
CP #19	2598174.928	2031101.605	60D NAIL
CP #21	2598124.480	2031224.948	60D NAIL

NOTE:
 BASIS OF BEARING IS GRID NORTH ON THE ILLINOIS STATE PLANE COORDINATE SYSTEM, EAST NAD83. VERTICAL DATUM BASED ON NAVD88.



REVISIONS	
NAME	DATE

ILLINOIS DEPARTMENT OF TRANSPORTATION
 SECTION 02-00518-00-BR
 WINNEBAGO COUNTY
 HARRISON AVENUE OVER UPRR AND CC&PRR
ALIGNMENT AND BENCHMARKS
 SCALE: VERT. 1"=40'
 HORIZ. 1"=100'
 DATE 12/14/06
 DRAWN BY
 CHECKED BY