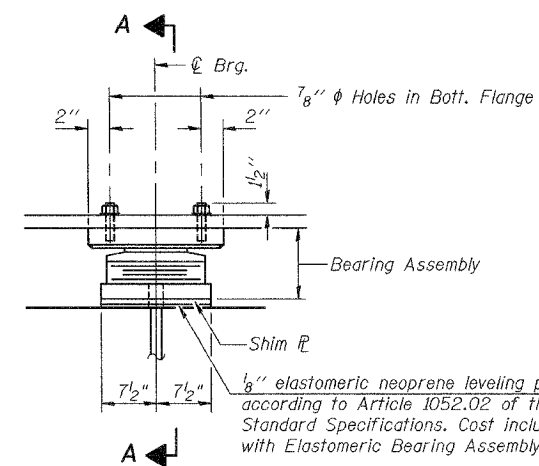


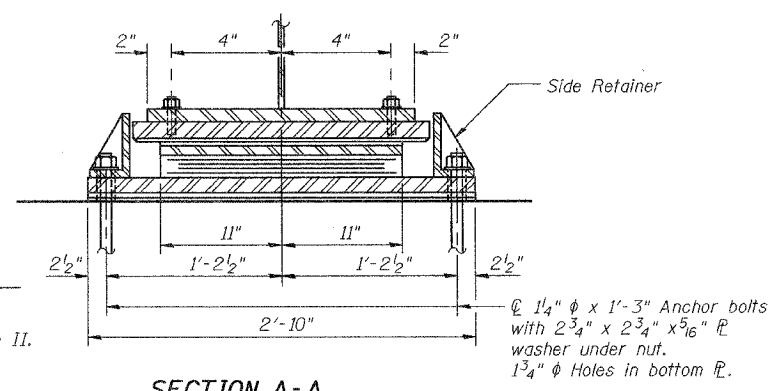
ROUTE NO.	SECTION	COUNTY	SHEET NO.	SHEET NO.
FAP 0525		WINNEBAGO	157	84
FED. ROAD DIST. NO. 7		ILLINOIS		FED. AID PROJECT
02-00518-00-BR				

SHEET NO. 27
50 SHEETS

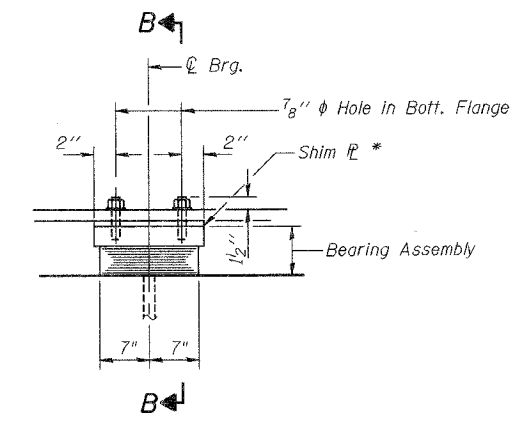


ELEVATION AT PIER 1

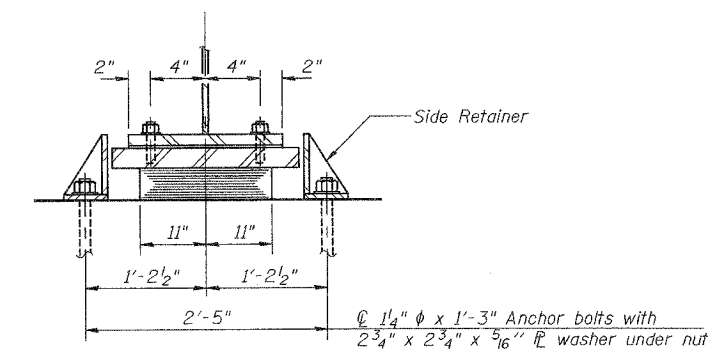
TYPE II ELASTOMERIC EXP. BRG. AT PIER 1



SECTION A-A

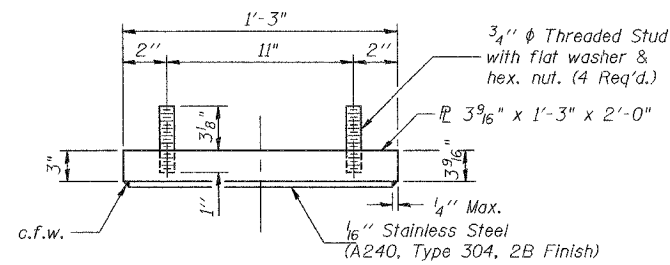


ELEVATION AT PIER 2

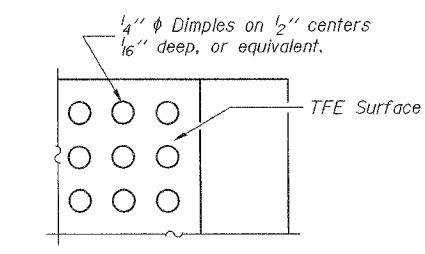


SECTION B-B

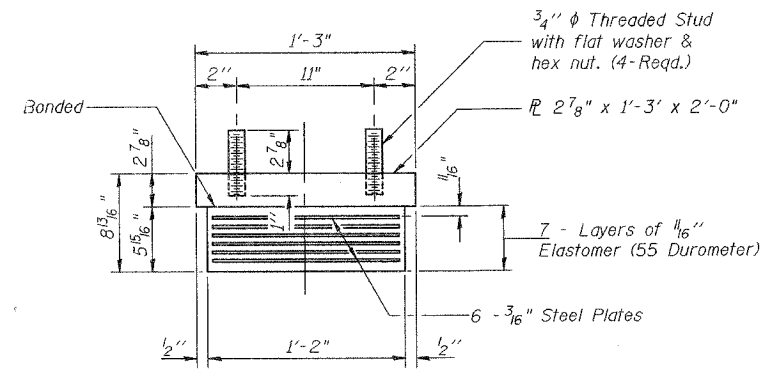
* Contractor shall provide additional steel shim(s) as required beneath Beam 4 at Pier 2 to result in an elevation difference between top of Beam 3 and top of Beam 4 of 7/16". (Beam 4 is higher). Total estimated shim height = 7/16". (Contractor to field verify) Shim plate(s) shall be the full dimension of the top bearing plate. Cost of shims is included with Elastomeric Bearing Assembly Type I.



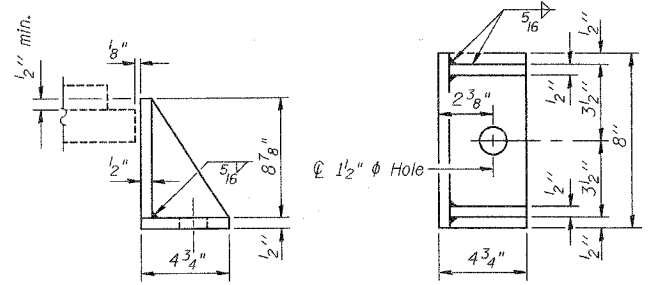
PIER 1 TOP BEARING ASSEMBLY



PIER 1 PLAN-TFE SURFACE

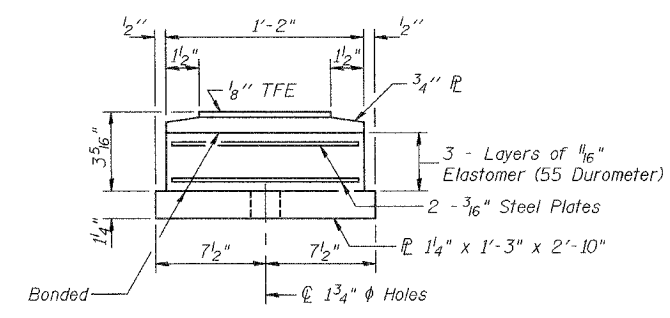


PIER 2 BEARING ASSEMBLY

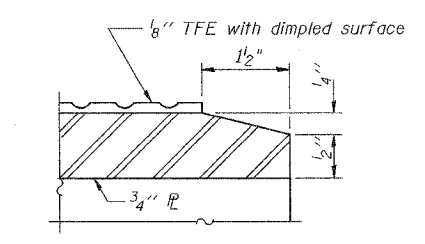


PIER 2 SIDE RETAINER

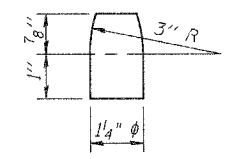
Equivalent rolled angle with stiffeners will be allowed in lieu of welded plates. Weight included with Structural Steel.



PIER 1 BOTTOM BEARING ASSEMBLY

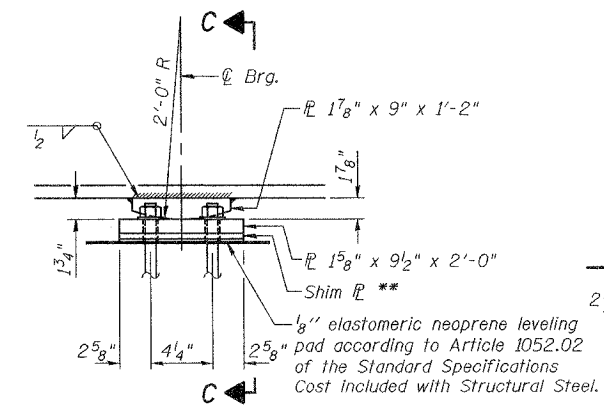


PIER 1 SECTION THRU TFE

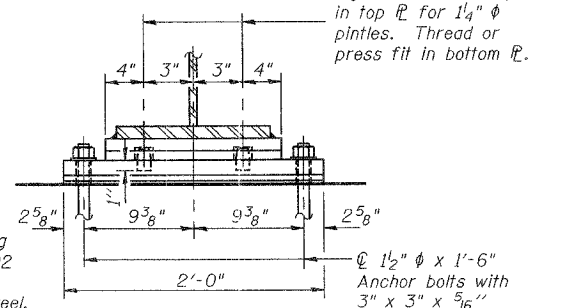


PINTE

TYPE I ELASTOMERIC EXP. BRG. AT PIER 2



ELEVATION AT PIER 3



SECTION C-C

** Contractor shall provide additional steel shim(s) as required beneath Beam 1 at Pier 3 to result in an elevation difference between top of Beam 1 and top of Beam 4 of 3/16". (Beam 1 is higher). Total estimated shim height = 3/16". (Contractor to field verify) Contractor shall provide additional steel shim(s) as required beneath Beam 2 at Pier 3 to result in an elevation difference between top of Beam 2 and top of Beam 4 of 9/16". (Beam 2 is higher). Total estimated shim height = 9/16". (Contractor to field verify) Contractor shall provide additional steel shim(s) as required beneath Beam 3 at Pier 3 to result in an elevation difference between top of Beam 3 and top of Beam 4 of 1/2". (Beam 3 is higher). Total estimated shim height = 1/2". (Contractor to field verify) Shim plate(s) shall be the full dimension of the bottom bearing plate. Cost of shims is included with Structural Steel.

FIXED BEARING AT PIER 3

NOTES

The 1/8" TFE sheet shall be bonded directly to the top steel plate with a two-component, medium viscosity epoxy resin, conforming to the requirements of the Federal Specification MMM-A-134, Type I. The bond agent shall be applied on the full area of the contact surfaces. Bonding of 1/8" TFE sheet during vulcanizing process will be permitted provided the process and method of adjusting assembly height is approved by the Engineer. All structural steel bearing plates and pintles for low profile fixed bearings and Elastomeric Bearing Assemblies shall be AASHTO M270, Grade 50. Anchor bolts shall be high strength bolts (AASHTO M164, Type 1 or 2). Shim plates shall not be placed under Type I Elastomeric Bearing Assembly. Anchor bolts at fixed bearings may be built into the masonry. See Sheet 29 of 50 for Anchor Bolt Installation. See Sheet 26 of 50 for Setting Anchor Bolts at Expansion Bearing detail.

BILL OF MATERIAL

Item	Unit	Total
Elastomeric Bearing Assembly Type I	Each	6
Elastomeric Bearing Assembly Type II	Each	6

Corporate License Number 184-001-084

BEARING DETAILS
EASTBOUND HARRISON AVENUE
OVER UP & CC&P RAILROAD
F.A.P. ROUTE 0525
SECTION 02-00518-00-BR
ROCKFORD, ILLINOIS
STATION 95+72.00
STRUCTURE NO. 101-6111

© Copyright Hanson Professional Services Inc. 2006
HANSON
JOB NO. 03R1751
DATE 12/14/06

9:52:30 AM 12/13/06
 I:\13\2006\0952 AM
 1\03\103\03R1751\Struct\Sheet\East\Bearing\02-EB-Bear\DerPier.dgn
 LAYOUT JMR 12/13/06
 DRAWN MDM/KRC/12/14/06
 REVIEWED F.L. 08/05/06