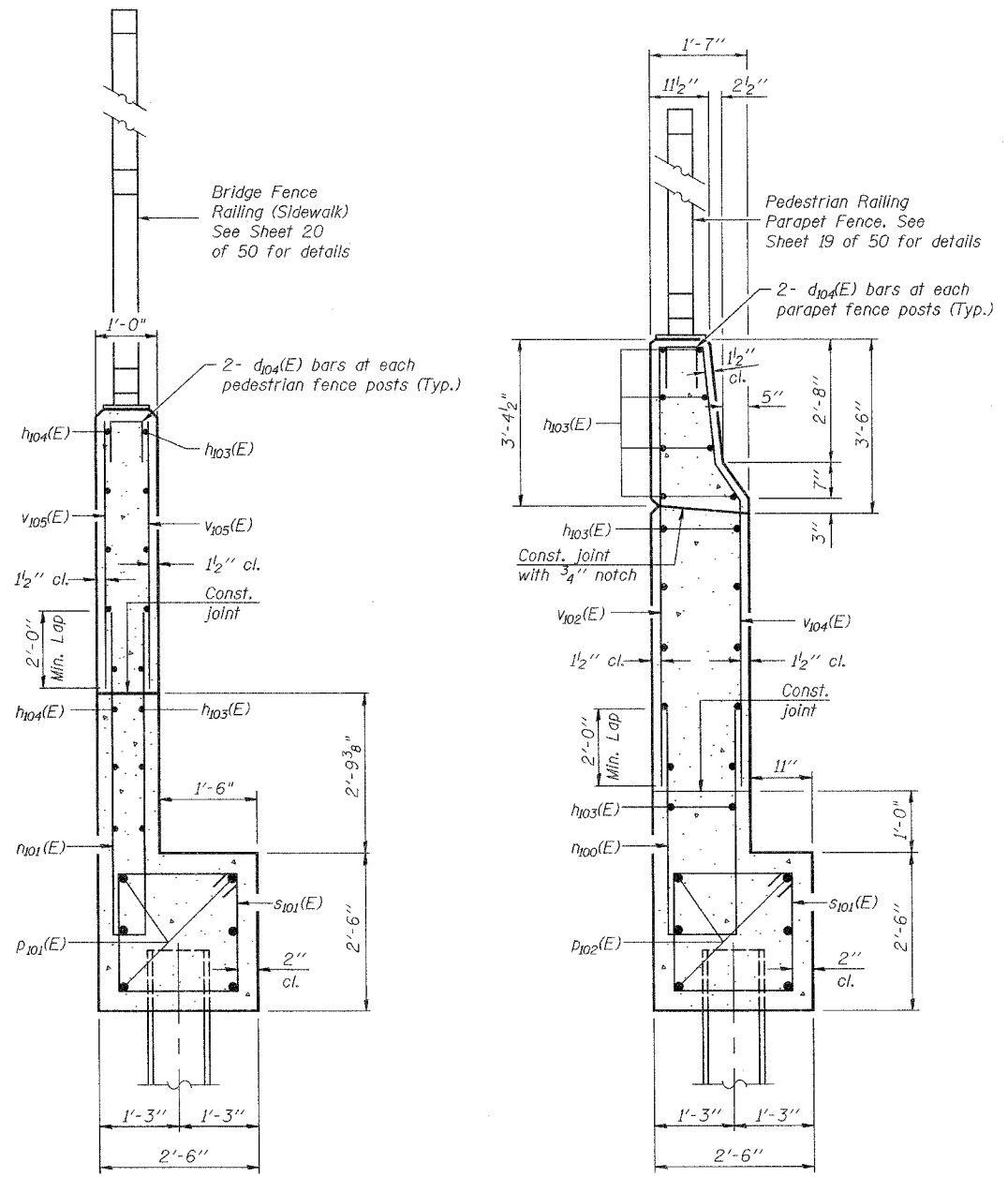


ROUTE NO.	SECTION	COUNTY	FEEL SHEETS	SHEET NO.
FAP 0525		WINNEBAGO	157	89
FED. ROAD DIST. NO. 7		ILLINOIS	FED. AID PROJECT	
* 02-00518-00-BR				

SHEET NO. 32
50 SHEETS

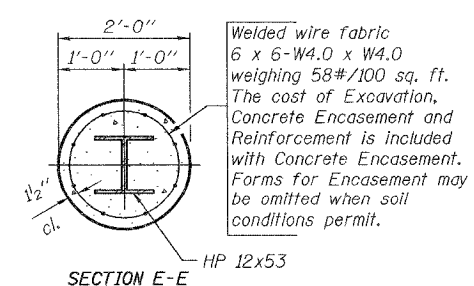
**WEST ABUTMENT
BILL OF MATERIAL**

Bar	No.	Size	Length	Shape
d ₁₀₄ (E)	12	#4	2'-1"	□
h ₁₀₀ (E)	14	#5	31'-10"	—
h ₁₀₁ (E)	10	#5	6'-3"	∟
h ₁₀₂ (E)	10	#5	8'-9"	∟
h ₁₀₃ (E)	28	#4	13'-9"	—
h ₁₀₄ (E)	8	#4	14'-10"	—
h ₁₀₅ (E)	8	#6	32'-1"	—
h ₁₀₀ (E)	15	#6	12'-8"	—
h ₁₀₁ (E)	20	#6	14'-9"	—
p ₁₀₀ (E)	24	#7	33'-10"	—
p ₁₀₁ (E)	6	#7	14'-9"	—
p ₁₀₂ (E)	6	#7	16'-3"	—
p ₁₀₃ (E)	5	#5	24'-11"	—
p ₁₀₄ (E)	5	#5	13'-9"	—
p ₁₀₅ (E)	5	#5	8'-6"	—
s ₁₀₀ (E)	58	#5	17'-1"	□
s ₁₀₁ (E)	26	#4	9'-5"	□
s ₁₀₂ (E)	43	#5	9'-11"	□
s ₁₀₃ (E)	1	#5	16'-1"	□
s ₁₀₄ (E)	1	#5	14'-5"	□
u ₁₀₀ (E)	4	#6	13'-9"	∟
u ₁₀₁ (E)	6	#6	11'-10"	∟
v ₁₀₀ (E)	62	#5	2'-6"	—
v ₁₀₁ (E)	62	#4	3'-7"	—
v ₁₀₂ (E)	15	#6	6'-7"	—
v ₁₀₃ (E)	124	#4	5'-3"	—
v ₁₀₄ (E)	15	#6	6'-7"	—
v ₁₀₅ (E)	41	#6	3'-5"	—
Structure Excavation	Cu. Yd.		117.1	
Concrete Structures	Cu. Yd.		77.5	
Concrete Encasement	Cu. Yd.		3.9	
Reinforcement Bars, Epoxy Coated	Pound		7490	
Furnishing Steel Piles, HP12x53	Foot		450	
Driving Piles	Foot		450	
Test Piles Steel, HP12x53	Each		1	
Pile Shoes	Each		11	
Concrete Sealer	Sq. Ft.		213	
Porous Granular Embankment	Cu. Yd.		120.7	
Anchor Bolts, 1"	Each		12	
Permanent Survey Markers, Type 1	Each		1	

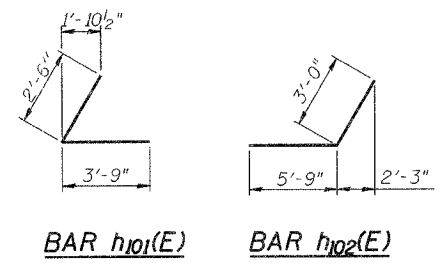


SECTION C-C

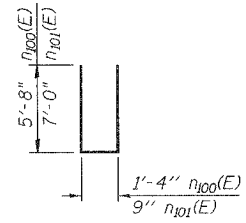
SECTION D-D



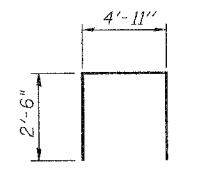
PILE ENCASEMENT DETAIL



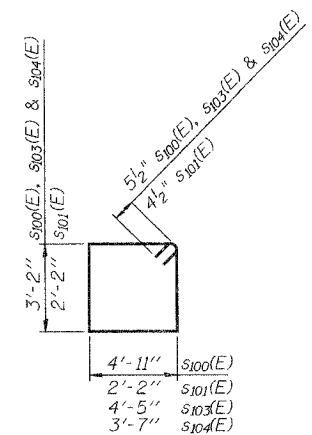
BAR h₁₀₁(E) BAR h₁₀₂(E)



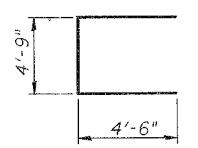
BAR h₁₀₀(E) & BAR h₁₀₁(E)



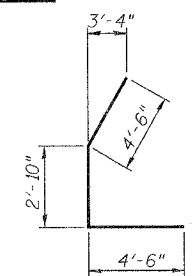
BAR s₁₀₂(E)



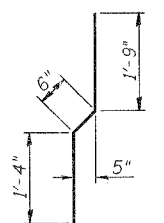
BARS s₁₀₀(E), s₁₀₁(E), s₁₀₃(E) & s₁₀₄(E)



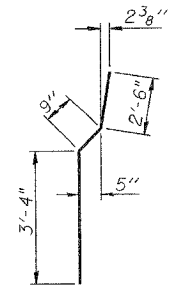
BAR u₁₀₀(E)



BAR u₁₀₁(E)



BAR v₁₀₁(E)



BAR v₁₀₄(E)

NOTES

Reinforcement bars designated (E) shall be epoxy coated.
Work this Sheet with Sheets 30 & 31 of 50.
See Sheet 16 of 50 for Bar d₁₀₄(E) configuration.

Corporate License Number 184-001-084

WEST ABUTMENT DETAILS

EASTBOUND HARRISON AVENUE
OVER UP & CC&P RAILROAD
F.A.P. ROUTE 0525
SECTION 02-00518-00-BR
ROCKFORD, ILLINOIS
STATION 95+72.00
STRUCTURE NO. 101-6111

© Copyright Hanson Professional Services Inc. 2006



JOB NO.
03R1751
DATE
12/14/06

10/05/05 AM 5/30/06
 12/3/2006 10:05 AM
 I:\02\05\03\06\05\Struct\Sheet\East\Bund\S-032-EB-WestAbut\Det-3.dgn
 LAYOUT SMK 5/30/06
 DRAWN MDM/JKR 8/14/06
 REVIEWED JKR 8/14/06