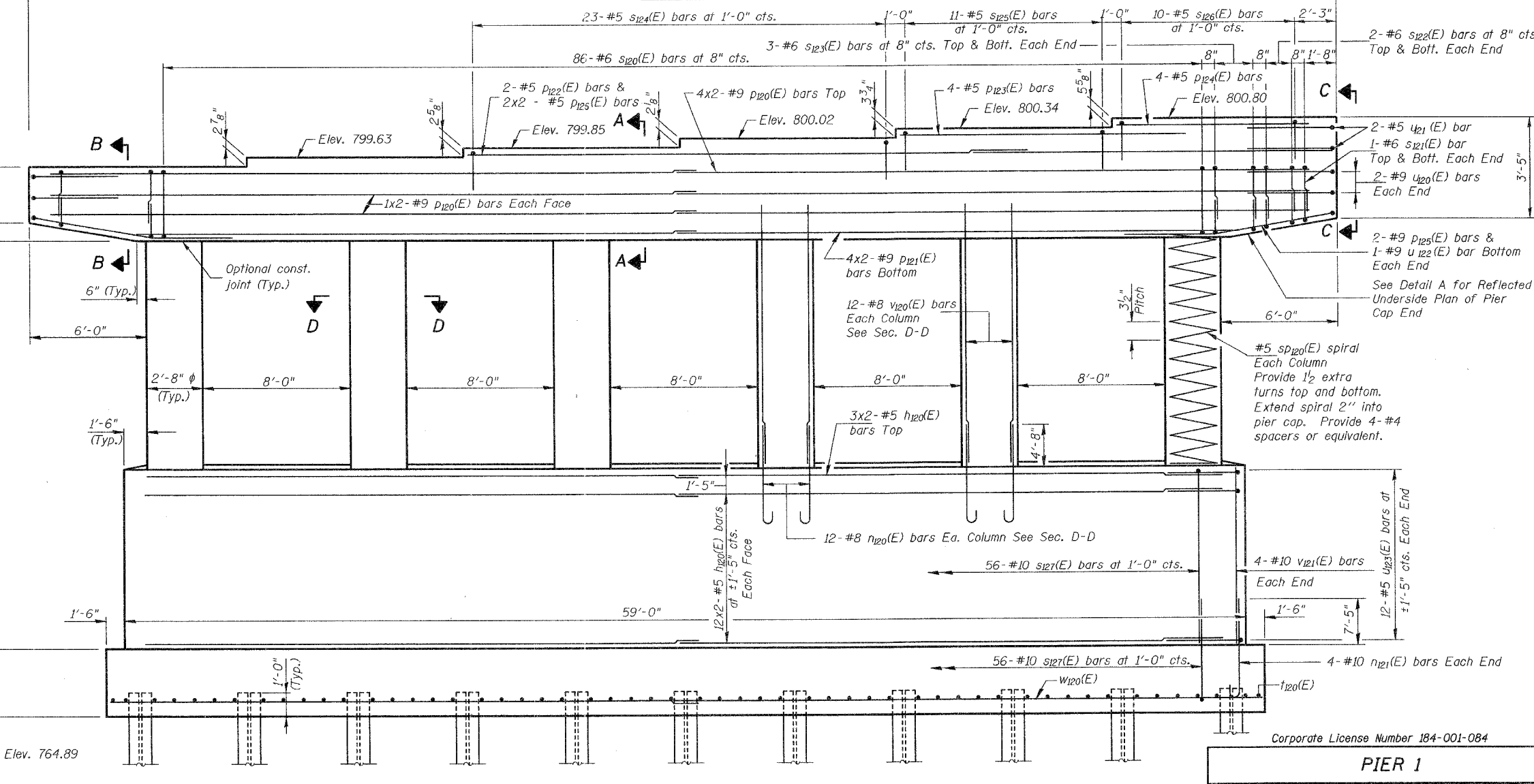
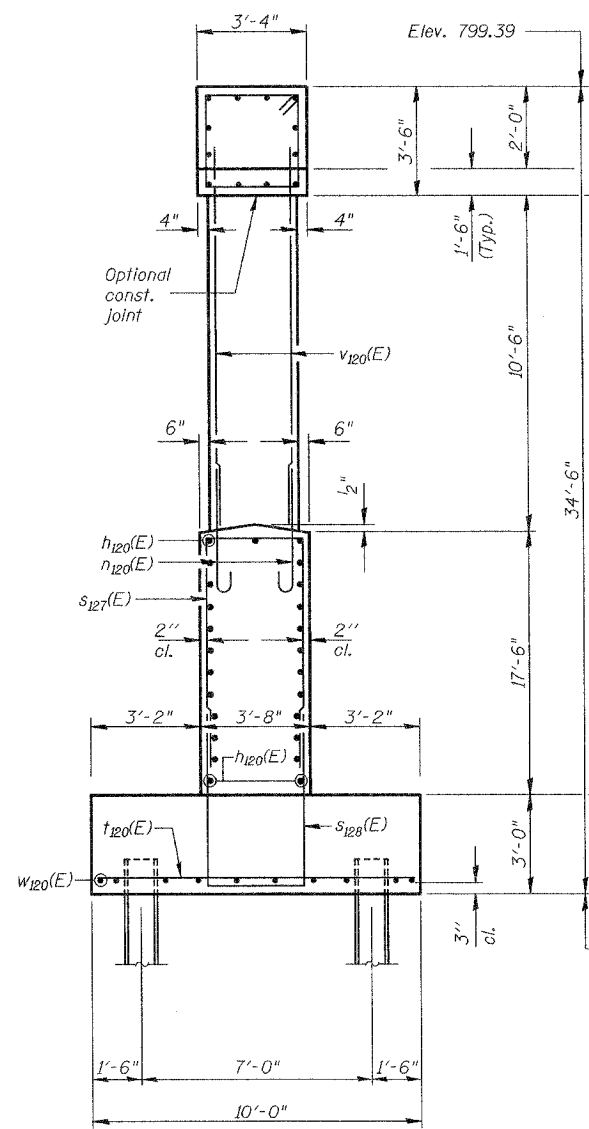
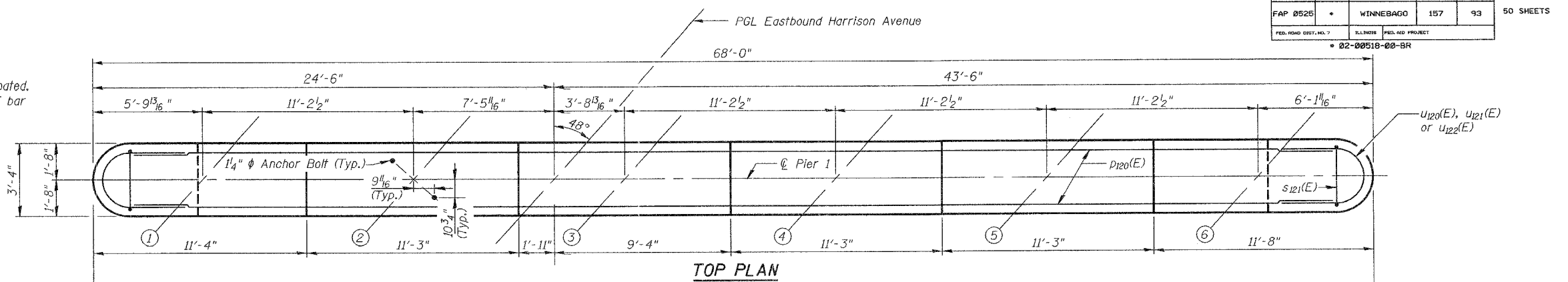


ROUTE NO.	SECTION	COUNTY	SHEET	SHEET NO.
FAP 0525	*	WINNEBAGO	157	93
FED. ROAD DIST. NO. 7				ILLINOIS
PROJECT NO. 02-00518-00-BR				50 SHEETS

**NOTES**

Space Reinforcement in cap to miss anchor bolts.  
 Pour steps monolithically with cap.  
 Work this sheet with Sheet 37 of 50.  
 Reinforcement Bars designated (E) shall be epoxy coated.  
 Bar indicated thus 1x2 - #5 etc. indicates 1 line of bar with 2 lengths per line.



**ELEVATION**  
(Looking Northeast)

**MINIMUM BAR LAP**

- HORIZONTAL**
- #5 - 2'-2" (Bottom of Footing)
  - #5 - 3'-0"
  - #9 - 8'-1"

**PIER 1**  
 EASTBOUND HARRISON AVENUE  
 OVER UP & CC&P RAILROAD  
 F.A.P. ROUTE 0525  
 SECTION 02-00518-00-BR  
 ROCKFORD, ILLINOIS  
 STATION 95+72.00  
 STRUCTURE NO. 101-6111

Corporate License Number 184-001-084

03R1751  
DATE 12/14/06

3:26:05 PM 3/01/06  
 12/12/00 06:03:26 PM  
 R03 Job 03R1751 Struct Steel East Bound S-036-EB-Pier1.dgn  
 LAYOUT MKR 3/01/06  
 DRAWN MRM/ART 7/24/06  
 REVIEWED FLN 08/04/06