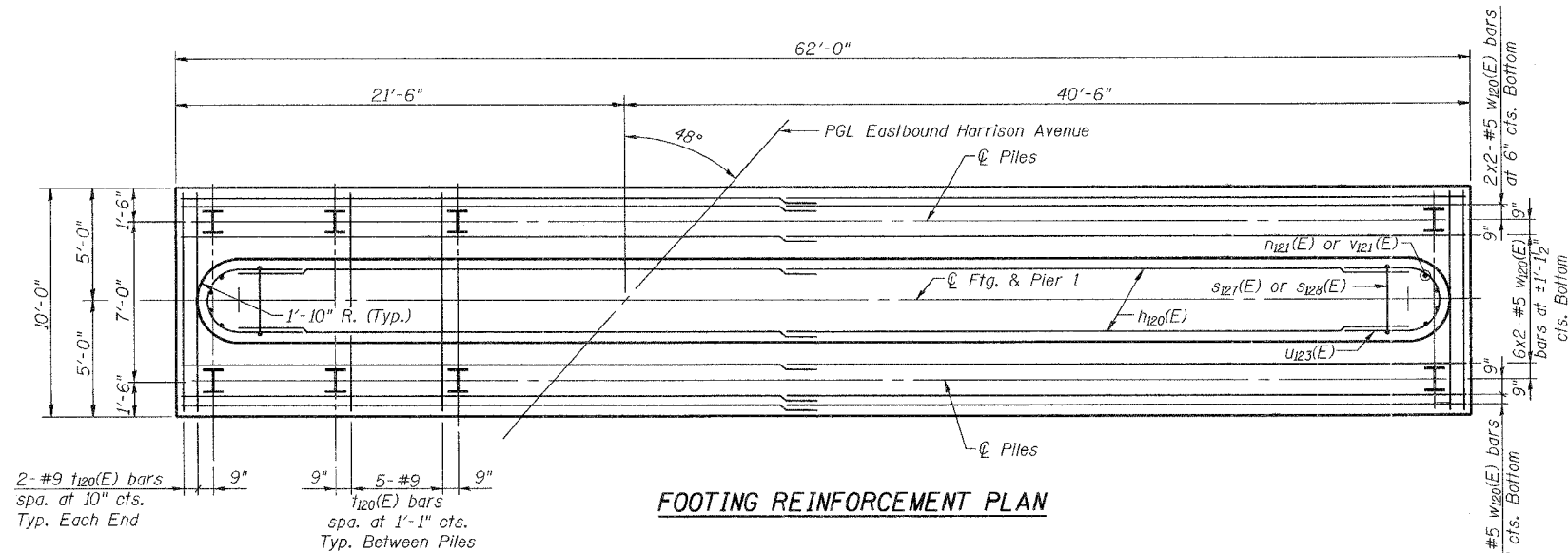
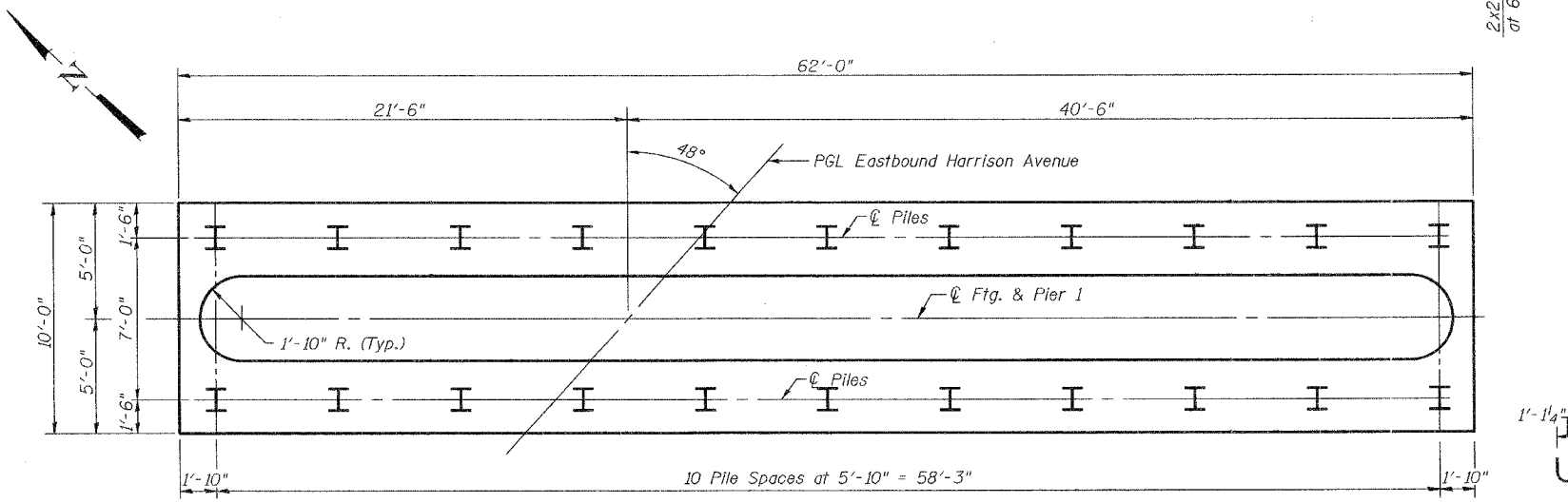


ROUTE NO.	SECTION	COUNTY	DATE	SHEET	SHEET NO.
FAP 0525		WINNEBAGO	157	94	50 SHEETS
FED. ROAD DIST. NO. 7 ILLINOIS FED. AID PROJECT					
* 02-00518-00-BR					

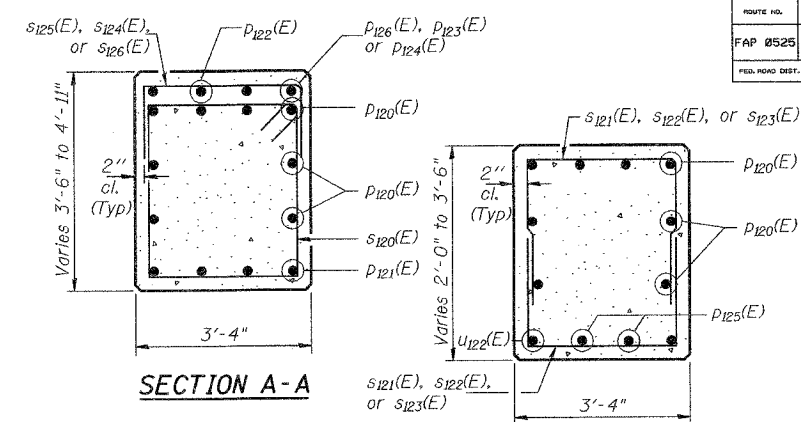


**FOOTING REINFORCEMENT PLAN**

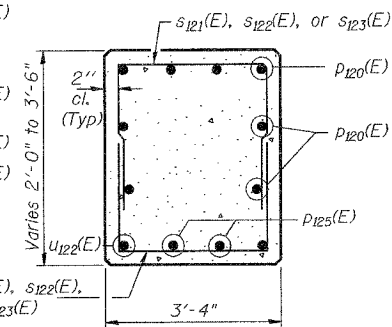


**FOOTING PILE PLAN**

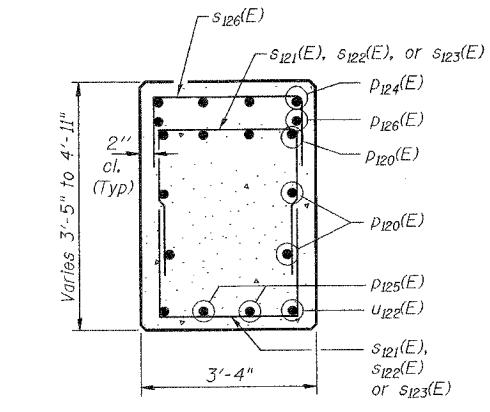
**PILE DATA**  
 Type & Size: HP 12x53 w/ Pile Shoes  
 Nominal Required Bearing: 420 Kips  
 Allowable Resistance Available: 140 Kips  
 Est. Length: 18'  
 No. Req'd: 21 + 1 Test Pile



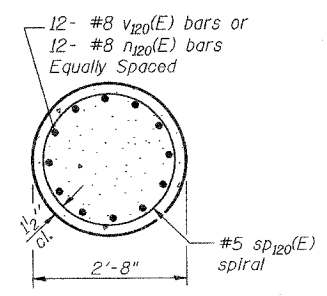
**SECTION A-A**



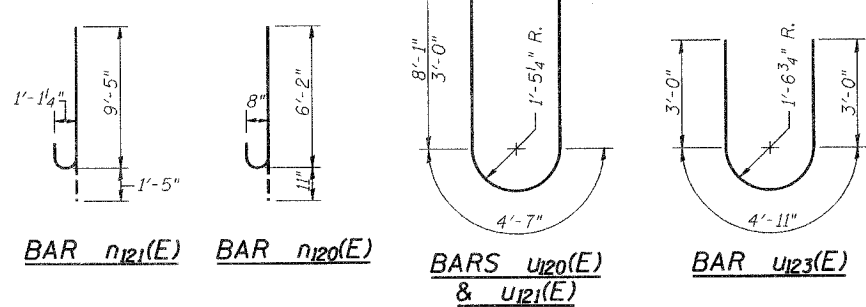
**SECTION B-B**



**SECTION C-C**



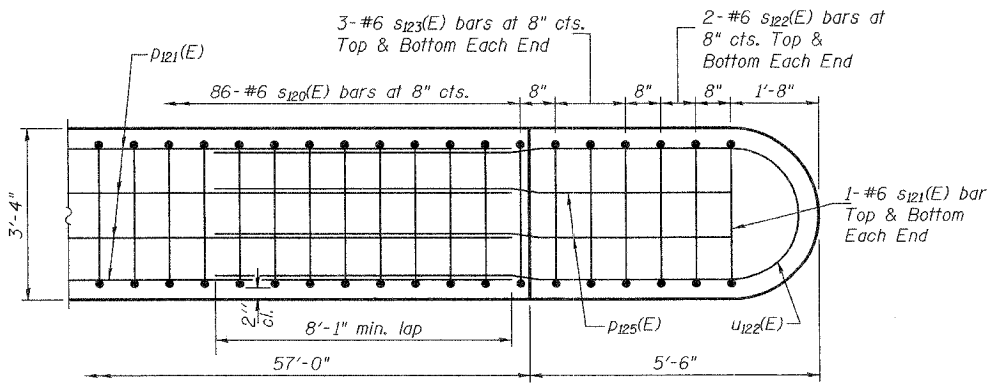
**SECTION D-D**



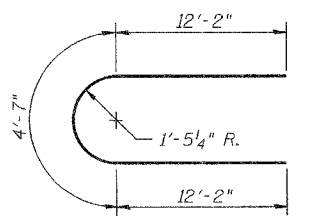
**PIER 1 BILL OF MATERIAL**

Bar	No.	Size	Length	Shape
P120(E)	54	#5	29'-2"	—
P120(E)	72	#8	7'-1"	U
P121(E)	8	#10	10'-10"	U
P120(E)	16	#9	36'-5"	—
P121(E)	8	#9	32'-7"	—
P122(E)	2	#5	25'-6"	—
P123(E)	4	#5	14'-3"	—
P124(E)	4	#5	9'-10"	—
P125(E)	4	#9	12'-0"	—
P126(E)	4	#9	23'-4"	—
S120(E)	86	#6	13'-8"	□
S121(E)	4	#6	7'-2"	U
S122(E)	8	#6	7'-6"	U
S123(E)	12	#6	8'-0"	U
S124(E)	23	#5	7'-4"	U
S125(E)	11	#5	8'-4"	U
S126(E)	10	#5	9'-2"	U
S127(E)	56	#10	37'-8"	U
S128(E)	56	#10	23'-8"	U
*SP120(E)	6	#5	10'-8"	W
T120(E)	54	#9	9'-8"	—
U120(E)	4	#9	20'-9"	U
U121(E)	2	#5	10'-7"	U
U122(E)	2	#9	28'-11"	U
U123(E)	26	#5	10'-11"	U
V120(E)	72	#8	12'-6"	—
V121(E)	8	#10	17'-2"	—
W120(E)	20	#5	31'-11"	—
Concrete Structures	Cu. Yd.		253.6	
Reinforcement Bars, Epoxy Coated	Pound		32,140	
Structure Excavation	Cu. Yd.		548.3	
Furnishing Steel Piles, HP 12x53	Foot		378	
Driving Piles	Foot		378	
Pile Shoes	Each		22	
Test Pile Steel HP 12x53	Each		1	
Anchor Bolts, 1 1/4"	Each		12	

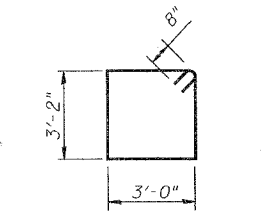
**NOTES**  
 Work this sheet with Sheet 36 of 50.  
 Reinforcement Bars designated (E) shall be epoxy coated.  
 Bar indicated thus 1x2 - #5 etc. indicates 1 line of bar with 2 lengths per line.  
 \* Length is spiral height.



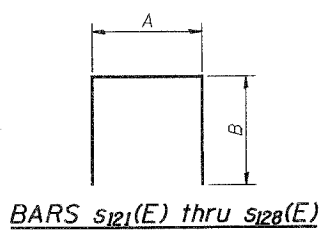
**DETAIL A REFLECTED UNDERSIDE PLAN OF PIER CAP END**



**BAR u122(E)**



**BAR P125(E)**



**BARS s121(E) thru s128(E)**

**A & B DIMENSIONS**

Bar	A	B
s121(E)	3'-0"	2'-1"
s122(E)	3'-0"	2'-3"
s123(E)	3'-0"	2'-6"
s124(E)	3'-0"	2'-2"
s125(E)	3'-0"	2'-8"
s126(E)	3'-0"	3'-1"
s127(E)	3'-4"	17'-2"
s128(E)	3'-4"	10'-2"

**MINIMUM BAR LAP**

**HORIZONTAL**  
 #5 - 2'-2" (Bottom of Footing)  
 #5 - 3'-0"  
 #9 - 8'-1"

**PIER 1 DETAILS**  
 EASTBOUND HARRISON AVENUE  
 OVER UP & CC&P RAILROAD  
 F.A.P. ROUTE 0525  
 SECTION 02-00518-00-BR  
 ROCKFORD, ILLINOIS  
 STATION 95+72.00  
 STRUCTURE NO. 101-6111

© Copyright Hanson Professional Services Inc. 2006  
 Corporate License Number 184-001-084

**HANSON**

JOB NO. 03R1751  
 DATE 12/14/06

3:25:39 PM 3/01/06  
 12/2/2006 03:25 PM  
 A:\03\0803\03R1751\Struct\Sheet\East Bound\5-037-EB-Pier\Detail.dwg  
 LAYOUT JKR 3/01/06  
 DRAWN MCM/JAR 7/24/06  
 REVISIONS FLN 08/04/08