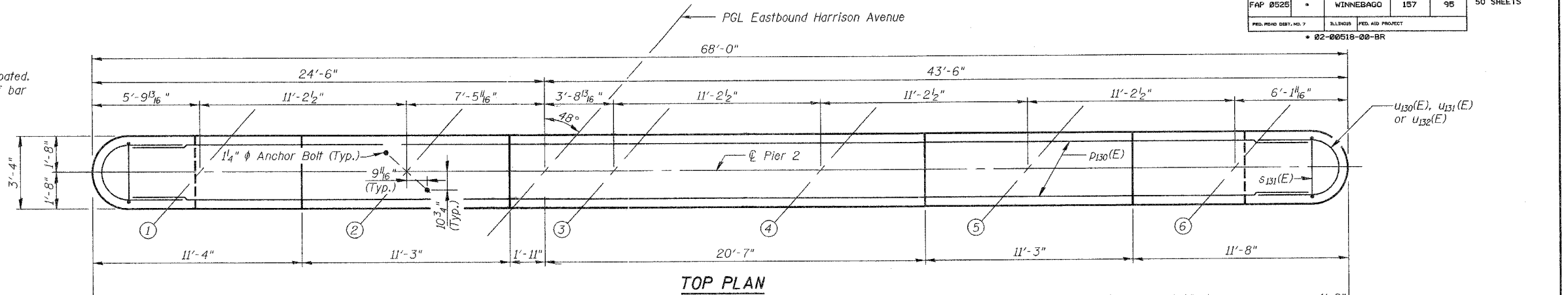


ROUTE NO.	SECTION	COUNTY	SHEET	SHEET NO.
FAP 0525		WINNEBAGO	157	95
FED. ROAD DIST. NO. 7		ILLINOIS		FED. AID PROJECT
02-00518-00-BR				

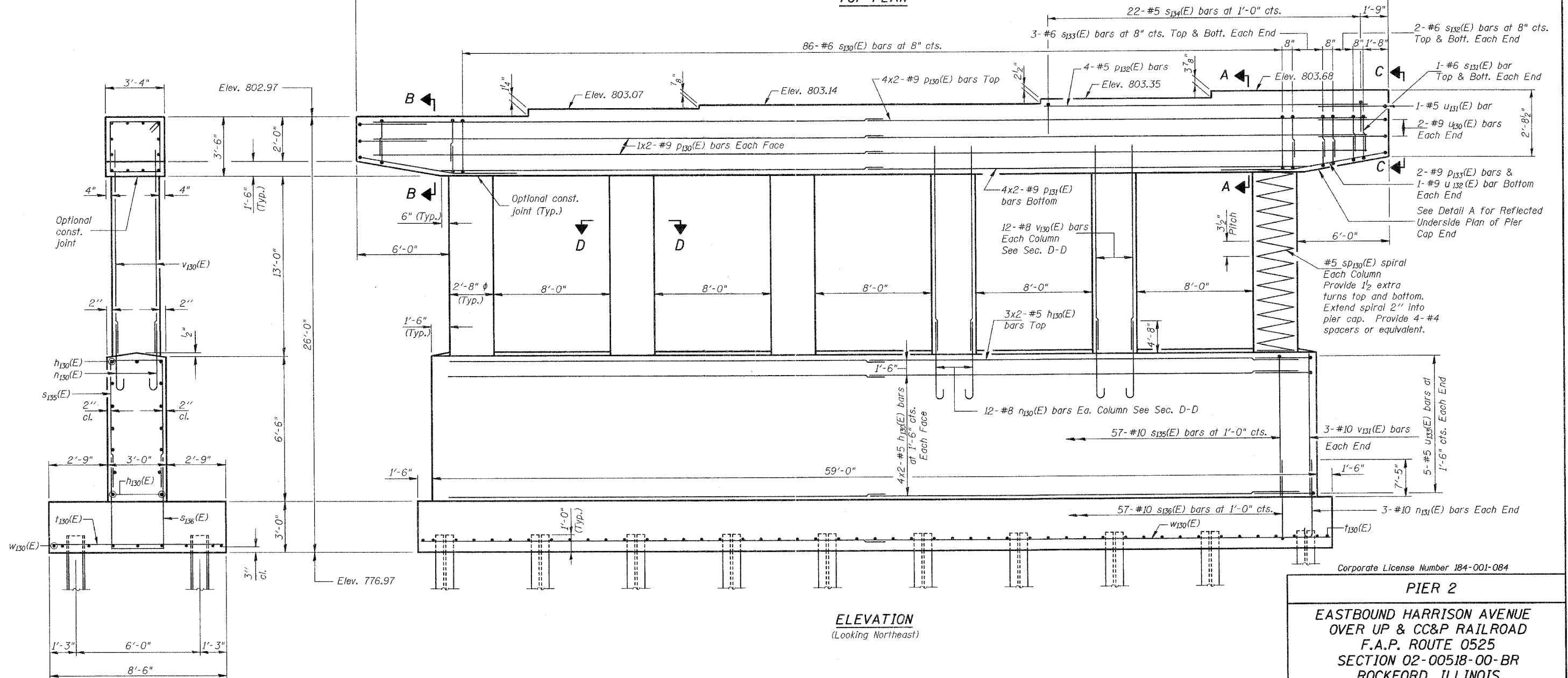
50 SHEETS

**NOTES**

Space Reinforcement in cap to miss anchor bolts.  
 Pour steps monolithically with cap.  
 Work this sheet with Sheet 39 of 50.  
 Reinforcement Bars designated (E) shall be epoxy coated.  
 Bar indicated thus 1x2 - #5 etc. indicates 1 line of bar with 2 lengths per line.



**TOP PLAN**



**ELEVATION**  
(Looking Northeast)

**END VIEW**

**MINIMUM BAR LAP**

- HORIZONTAL**
- #5 - 2'-2" (Bottom of Footing)
  - #5 - 3'-0"
  - #9 - 8'-1"

Corporate License Number 184-001-084

**PIER 2**

**EASTBOUND HARRISON AVENUE  
 OVER UP & CC&P RAILROAD  
 F.A.P. ROUTE 0525  
 SECTION 02-00518-00-BR  
 ROCKFORD, ILLINOIS  
 STATION 95+72.00  
 STRUCTURE NO. 101-6111**

© Copyright Hanson Professional Services Inc. 2006



JOB NO.  
03R1751

DATE  
12/14/06

3:24:57 PM  
 12/12/2006 03:24 PM  
 I:\03\06503R1751\Struct\Sheet\East Bound\02-00518-00-BR-Pier 2.dwg

LAYOUT	JMR	3/01/06
DRAWN	MDW/JMR	7/24/06
REVIEWED	FLN	08/04/06