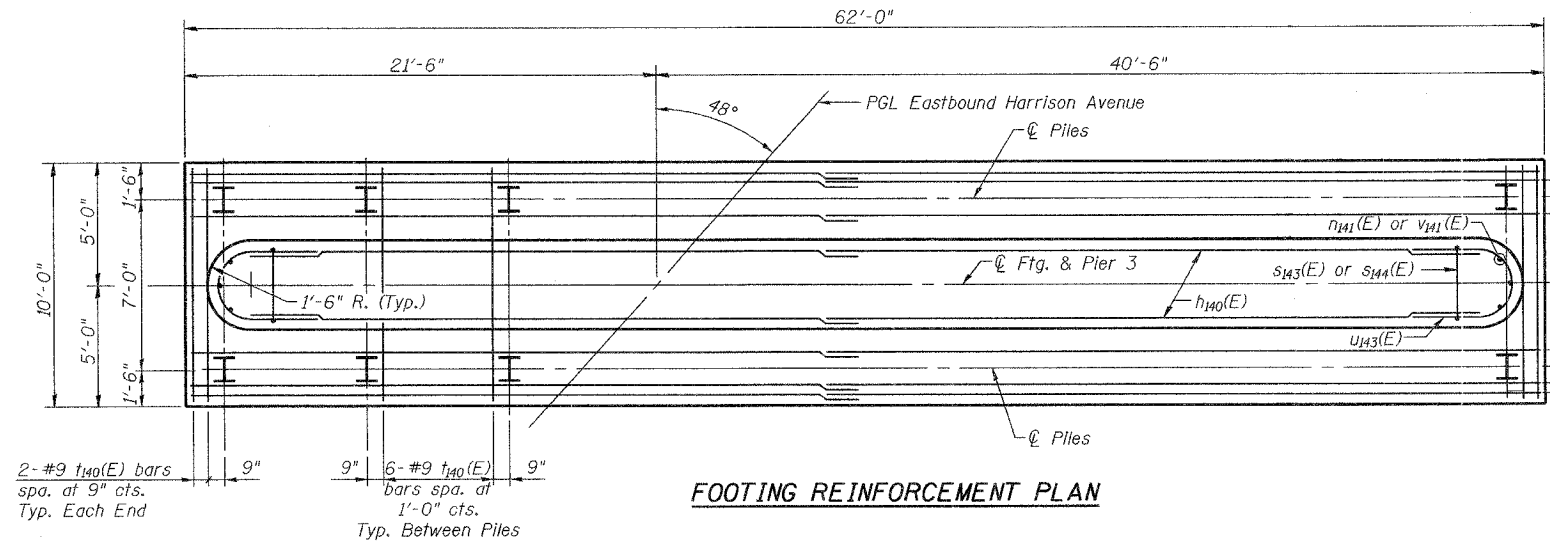
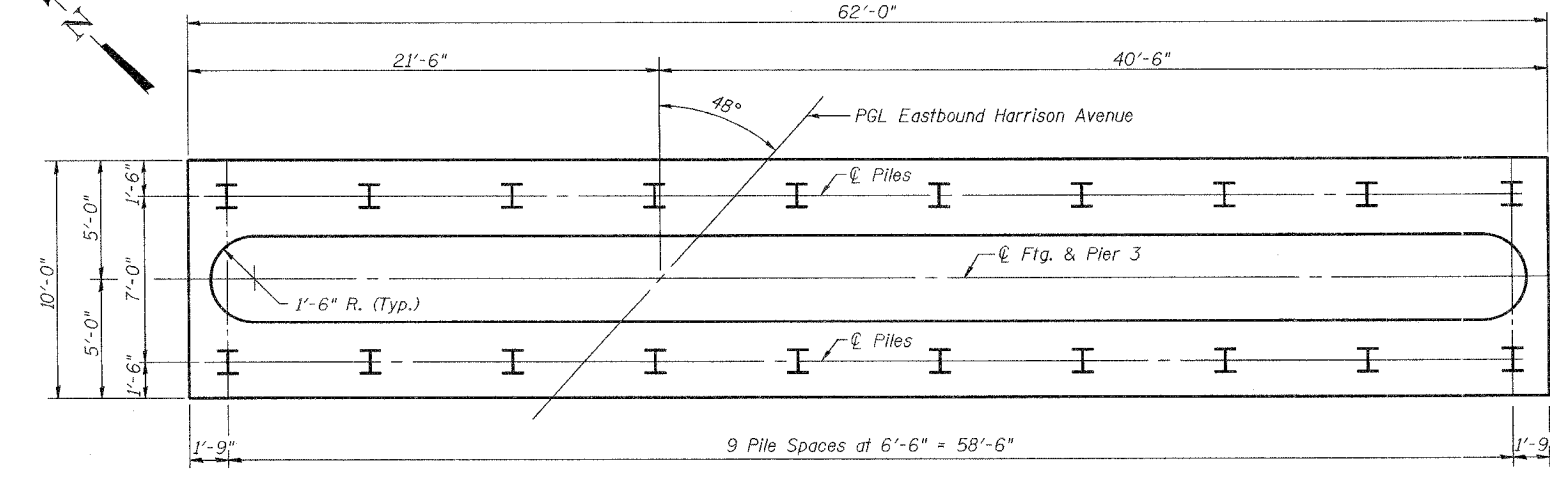


ROUTE NO.	DISTRICT	COUNTY	SHEET NO.	SHEET	SHEET NO.
FAP 0525		WINNEBAGO	157	98	41
FED. ROAD DIST. NO. 7			BLDG. NO.	FED. AID PROJECT	
				02-00518-00-BR	50 SHEETS

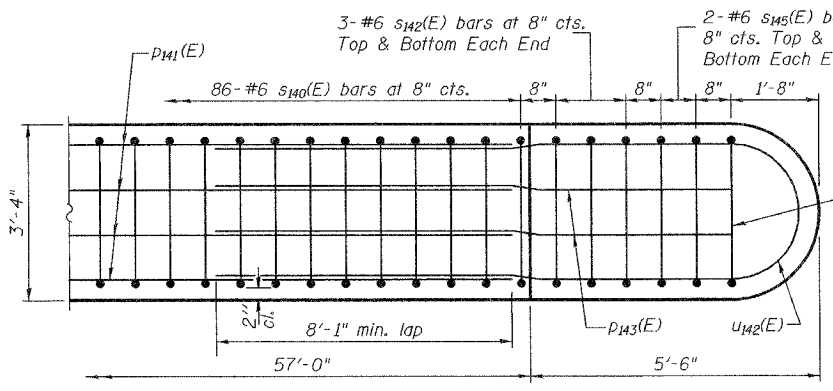


FOOTING REINFORCEMENT PLAN

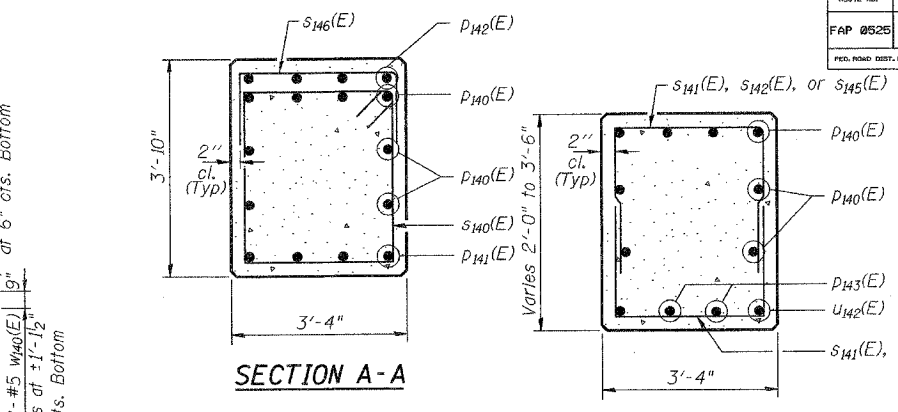


FOOTING PILE PLAN

PILE DATA
 Type & Size: HP 12x53 w/ Pile Shoes
 Nominal Required Bearing: 420 Kips
 Allowable Resistance Available: 140 Kips
 Est. Length: 20'
 No. Req'd: 19 + 1 Test Pile

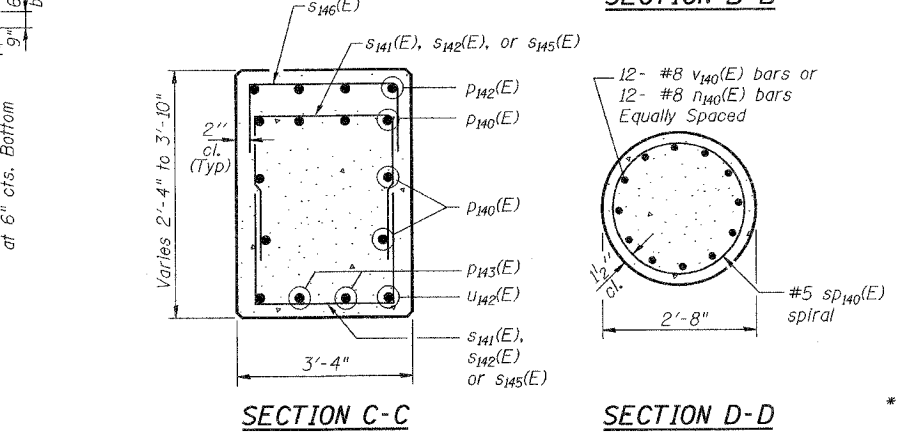


DETAIL A REFLECTED UNDERSIDE PLAN OF PIER CAP END



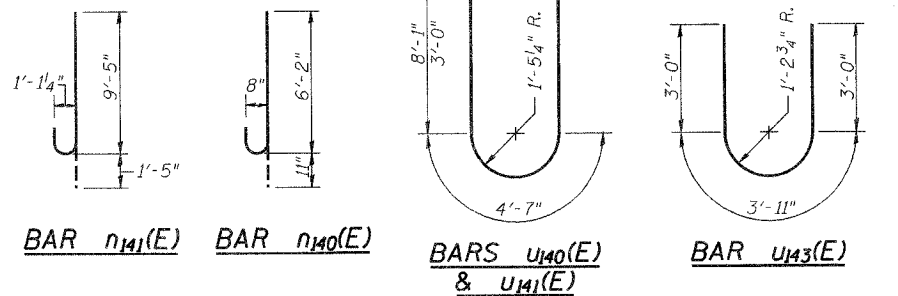
SECTION A-A

SECTION B-B



SECTION C-C

SECTION D-D



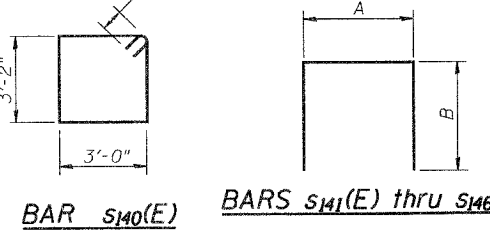
BAR n141(E) BAR n140(E) BARS u140(E) & u141(E) BAR u143(E)

PIER 3 BILL OF MATERIAL

Bar	No.	Size	Length	Shape
n140(E)	38	#5	29'-6"	—
n140(E)	72	#8	7'-1"	U
n141(E)	6	#10	10'-10"	U
p140(E)	16	#9	36'-5"	—
p141(E)	8	#9	32'-7"	—
p142(E)	4	#5	9'-10"	—
p143(E)	4	#9	12'-0"	—
s140(E)	86	#6	13'-8"	□
s141(E)	4	#6	7'-2"	U
s142(E)	12	#6	8'-0"	U
s143(E)	57	#10	26'-6"	U
s144(E)	57	#10	23'-0"	U
s145(E)	8	#6	7'-6"	U
s146(E)	10	#5	7'-2"	U
*SP140(E)	6	#5	15'-2"	W
I140(E)	58	#9	9'-8"	—
U140(E)	4	#9	20'-9"	U
U141(E)	1	#5	10'-7"	U
U142(E)	2	#9	28'-11"	U
U143(E)	18	#5	9'-11"	U
V140(E)	72	#8	17'-0"	—
V141(E)	6	#10	11'-11"	—
W140(E)	20	#5	31'-11"	—
Concrete Structures	Cu. Yd.		195.7	
Reinforcement Bars, Epoxy Coated	Pound		29,520	
Structure Excavation	Cu. Yd.		588.0	
Furnishing Steel Piles, HP 12x53	Foot		380	
Driving Piles	Foot		380	
Pile Shoes	Each		20	
Test Pile Steel	Each		1	
HP 12x53	Each		1	
Anchor Bolts, 1/2"	Each		24	

NOTES
 Work this sheet with Sheet 40 of 50.
 Reinforcement Bars designated (E) shall be epoxy coated.
 Bar indicated thus 1x2 - #5 etc. indicates 1 line of bar with 2 lengths per line.
 * Length is spiral height.
 Corporate License Number 184-001-084

MINIMUM BAR LAP



BAR s140(E) BARS s141(E) thru s146(E)

A & B DIMENSIONS

Bar	A	B
s141(E)	3'-0"	2'-1"
s142(E)	3'-0"	2'-6"
s143(E)	2'-8"	11'-8"
s144(E)	2'-8"	10'-2"
s145(E)	3'-0"	2'-3"
s146(E)	3'-0"	2'-1"

PIER 3 DETAILS
 EASTBOUND HARRISON AVENUE
 OVER UP & CC&P RAILROAD
 F.A.P. ROUTE 0525
 SECTION 02-00518-00-BR
 ROCKFORD, ILLINOIS
 STATION 95+72.00
 STRUCTURE NO. 101-6111

© Copyright Hanson Professional Services Inc. 2006

 JOB NO. 03R1751
 DATE 12/14/06

3:23:44 PM 3/20/06 12/2/2006 03:23 PM
 DRAWN: MGN/JAR 7/24/06
 REVIEWED: FLN 08/04/06
 P:\03\8860\03R1751\Struct\Steel\East Bound\05-04-EB-Pier-3Detail.dgn