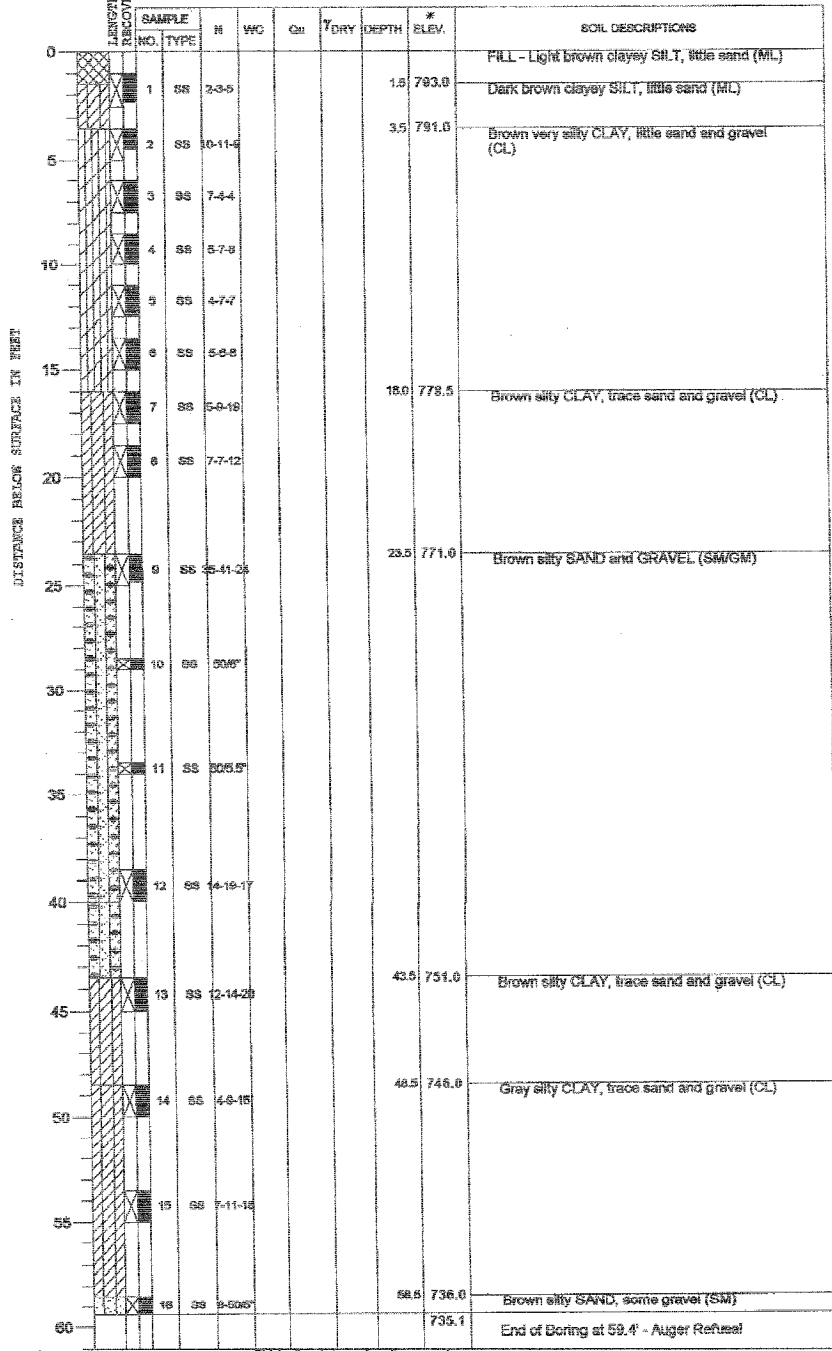


ROUTE NO.	SECTION	COUNTY	STATE	SHEET NO.	SHEET NO. 49 50 SHEETS
FAP 0525	*	WINNEBAGO	157	106	
FED. ROAD DIST. NO. 7					
ILLINOIS		FED. AID PROJECT			
* 02-00518-00-BR					

PROJECT Harrison Avenue Bridge over UP and CN Railroads, Rockford, Illinois
 CLIENT Hanson Professional Services, Inc., 1525 S. Sixth St., Springfield, IL 62703
 BORING B-3 DATE STARTED 3-2-04 DATE COMPLETED 3-2-04 JOB L-59,708



ELEVATIONS WATER TABLE
 GROUND SURFACE 794.5 * WHILE DRILLING DRY
 END OF BORING 735.1 * AT END OF BORING DRY
 24 HOURS DRY

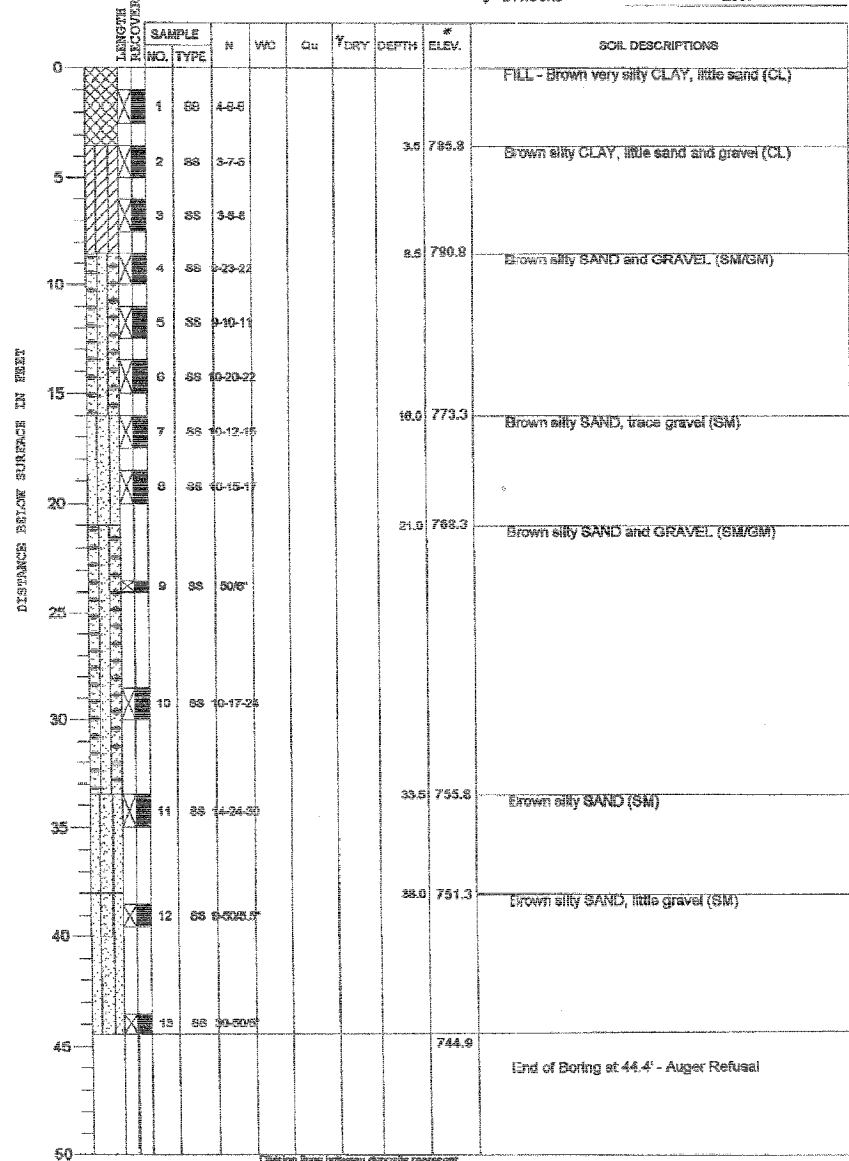


BORING LOG #3

PROJECT Harrison Avenue Bridge over UP and CN Railroads, Rockford, Illinois
 CLIENT Hanson Professional Services, Inc., 1525 S. Sixth St., Springfield, IL 62703
 BORING B-4 DATE STARTED 3-3-04 DATE COMPLETED 3-3-04 JOB L-59,708



ELEVATIONS WATER TABLE
 GROUND SURFACE 789.3 * WHILE DRILLING DRY
 END OF BORING 744.9 * AT END OF BORING DRY
 24 HOURS DRY

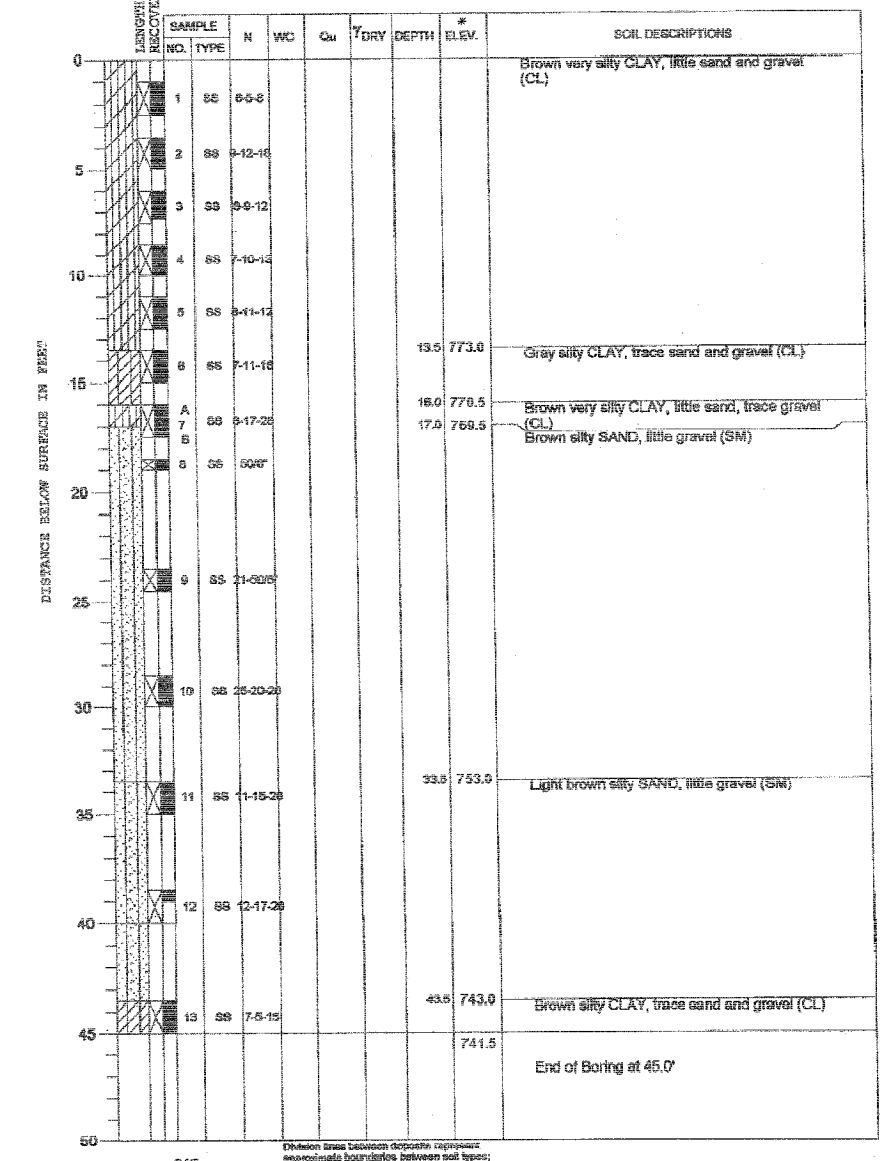


BORING LOG #4

PROJECT Harrison Avenue Bridge over UP and CN Railroads, Rockford, Illinois
 CLIENT Hanson Professional Services, Inc., 1525 S. Sixth St., Springfield, IL 62703
 BORING B-5 DATE STARTED 3-4-04 DATE COMPLETED 3-4-04 JOB L-59,708



ELEVATIONS WATER TABLE
 GROUND SURFACE 786.5 * WHILE DRILLING DRY
 END OF BORING 741.5 * AT END OF BORING DRY
 24 HOURS DRY



BORING LOG #5

Corporate License Number 184-001-084

BORING LOGS #3, #4 & #5
 EASTBOUND HARRISON AVENUE
 OVER UP & CC&P RAILROAD
 F.A.P. ROUTE 0525
 SECTION 02-00518-00-BR
 ROCKFORD, ILLINOIS
 STATION 95+72.00
 STRUCTURE NO. 101-6111

* - All elevations provided by Hanson Professional Services Inc.

© Copyright Hanson Professional Services Inc. 2006

 JOB NO. 03R1751
 DATE 12/14/06

1:55:04 PM 05/20/05
 12/3/2006 01:56 PM 05/05/05
 I:\03\05\03787\Strat\Sheet\East Boring\049-EB-SP-2.dgn

LAYOUT	MM	05/20/05
DRAWN	MM	05/05/05
REVIEWED	ELN	05/05/05