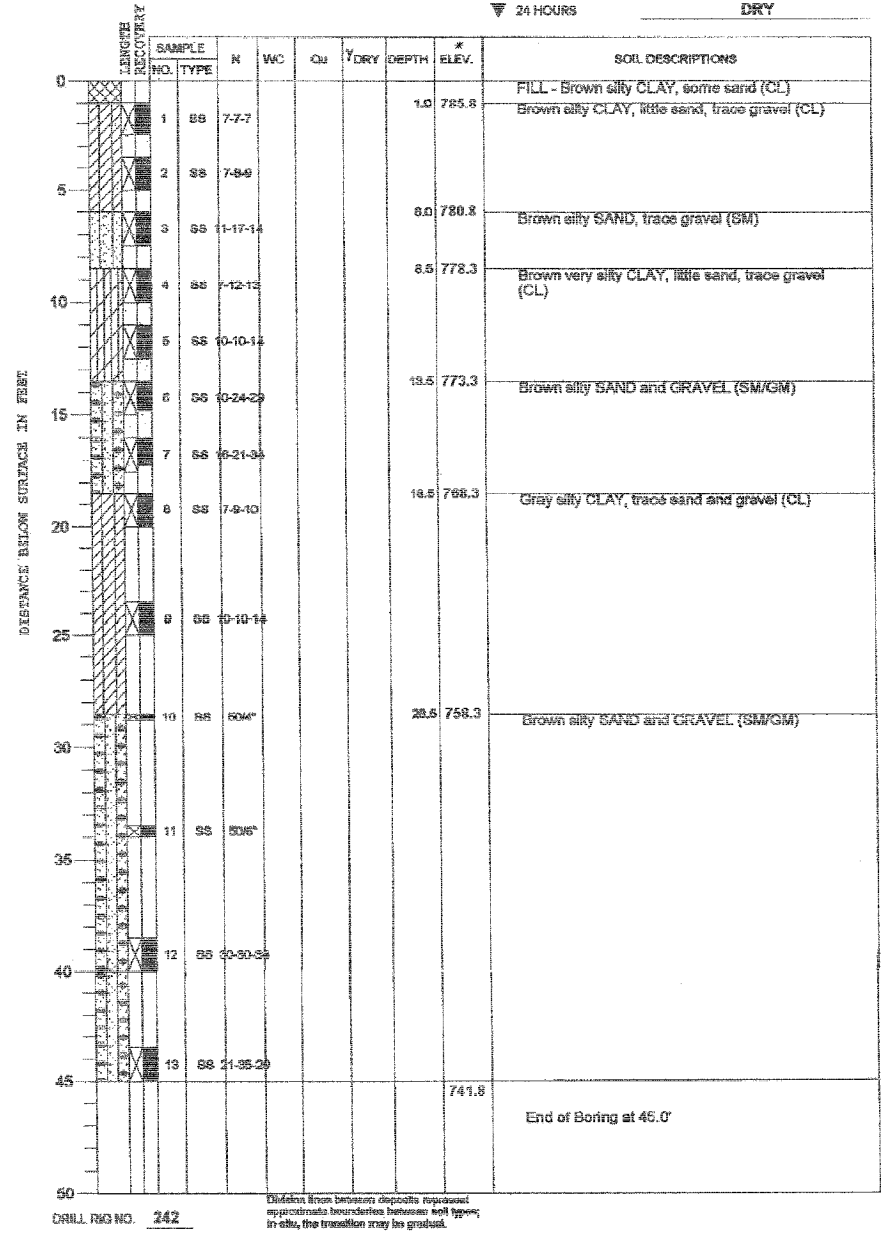


ROUTE NO.	SECTION	COUNTY	TOTAL SHEETS	SHEET NO.	SHEET NO. 50
FAP 0525	*	WINNEBAGO	157	107	50 SHEETS
FED. ROAD DIST. NO. 7		ILLINOIS	FED. ROAD PROJECT		
* 02-00518-00-BR					

PROJECT **Harrison Avenue Bridge over UP and CN Railroads, Rockford, Illinois**
 CLIENT **Hanson Professional Services, Inc., 1525 S. Sixth St., Springfield, IL 62763**
 BORING **B-6** DATE STARTED **3-3-04** DATE COMPLETED **3-3-04** JOB **L-59,706**

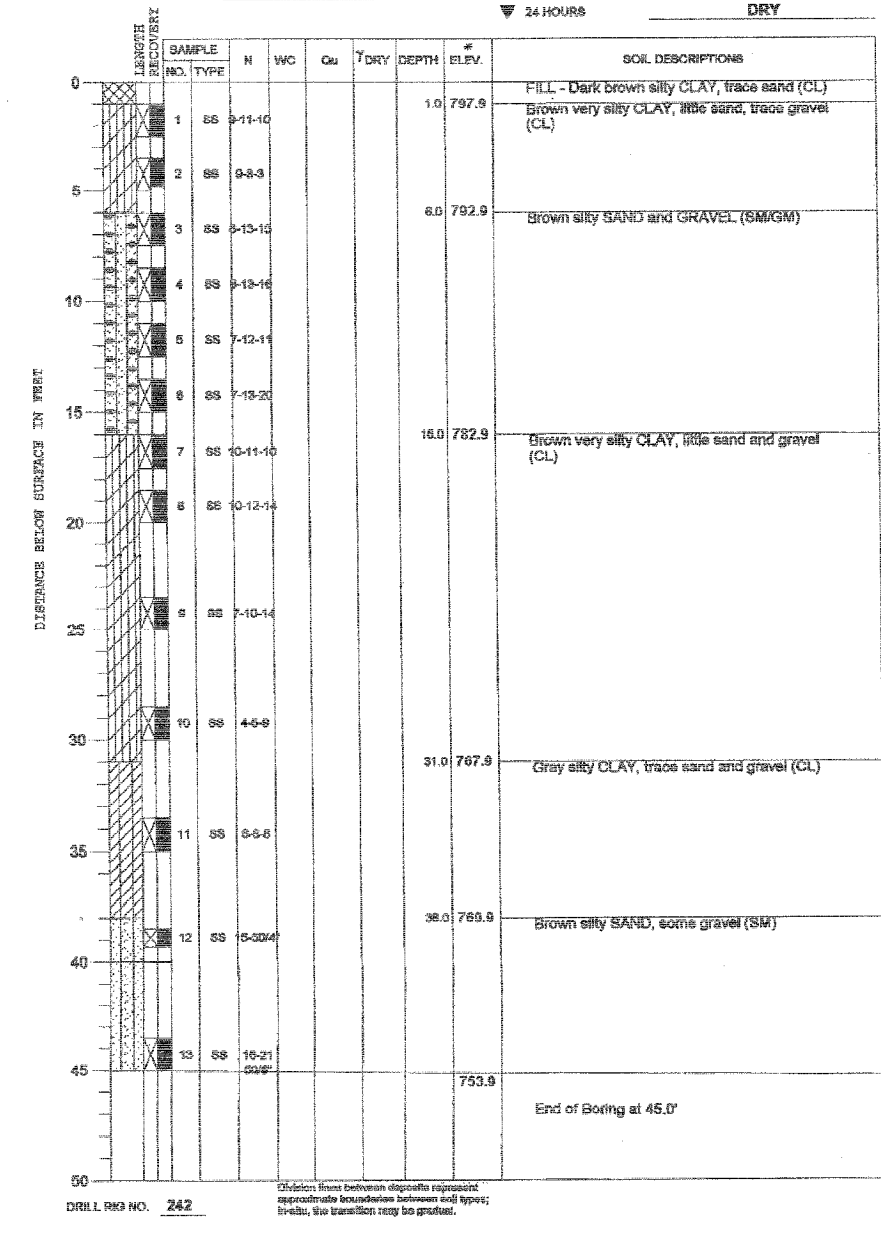
ELEVATIONS		WATER TABLE
GROUND SURFACE 786.8 *	▽ WHILE DRILLING	DRY
END OF BORING 741.8 *	▽ AT END OF BORING	DRY
	▽ 24 HOURS	DRY



BORING LOG #6

PROJECT **Harrison Avenue Bridge over UP and CN Railroads, Rockford, Illinois**
 CLIENT **Hanson Professional Services, Inc., 1525 S. Sixth St., Springfield, IL 62763**
 BORING **B-7** DATE STARTED **3-3-04** DATE COMPLETED **3-3-04** JOB **L-59,706**

ELEVATIONS		WATER TABLE
GROUND SURFACE 798.9 *	▽ WHILE DRILLING	DRY
END OF BORING 753.9 *	▽ AT END OF BORING	DRY
	▽ 24 HOURS	DRY



BORING LOG #7

* - All elevations provided by Hanson Professional Services Inc.

BORING LOGS #6 & #7
 Corporate License Number 184-001-084

**EASTBOUND HARRISON AVENUE
 OVER UP & CC&P RAILROAD
 F.A.P. ROUTE 0525
 SECTION 02-00518-00-BR
 ROCKFORD, ILLINOIS
 STATION 95+72.00
 STRUCTURE NO. 101-6111**

© Copyright Hanson Professional Services Inc. 2006

JOB NO. **03R1751**
 DATE **12/14/06**

1:56:26 PM
 12/13/2006 04:56 PM
 I:\03\00518\03R1751\Struct\Sheet\East\Boring\5-050-EP-Sp-3.dgn

LAYOUT	MGM	05/20/05
DRAWN	MGM	09/06/05
REVIEWED	FLN	08/05/06