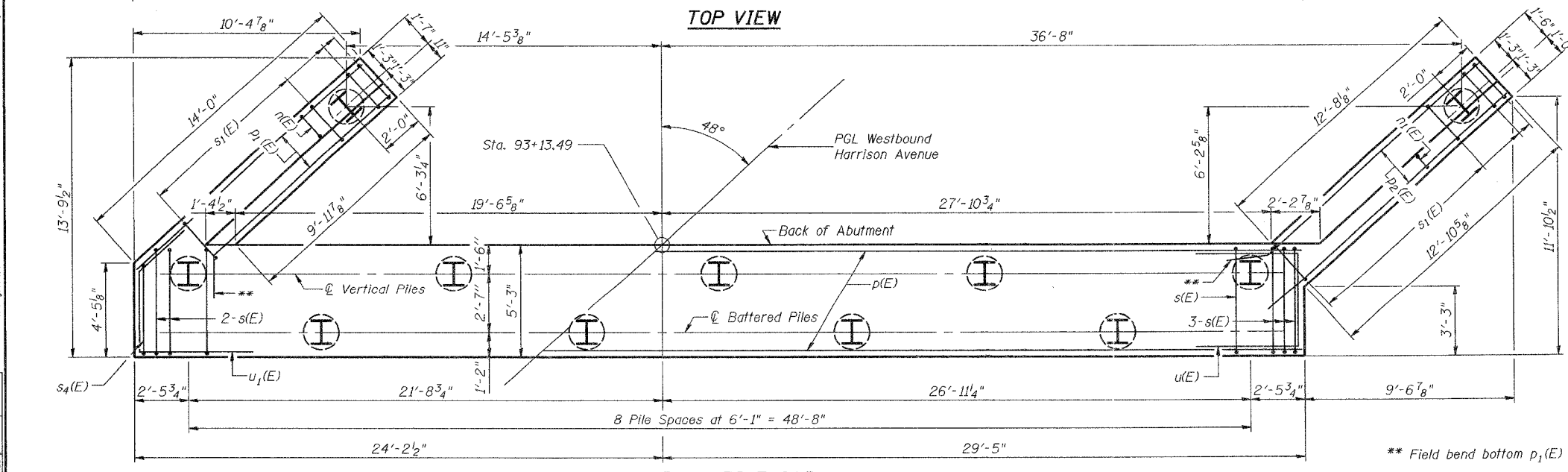
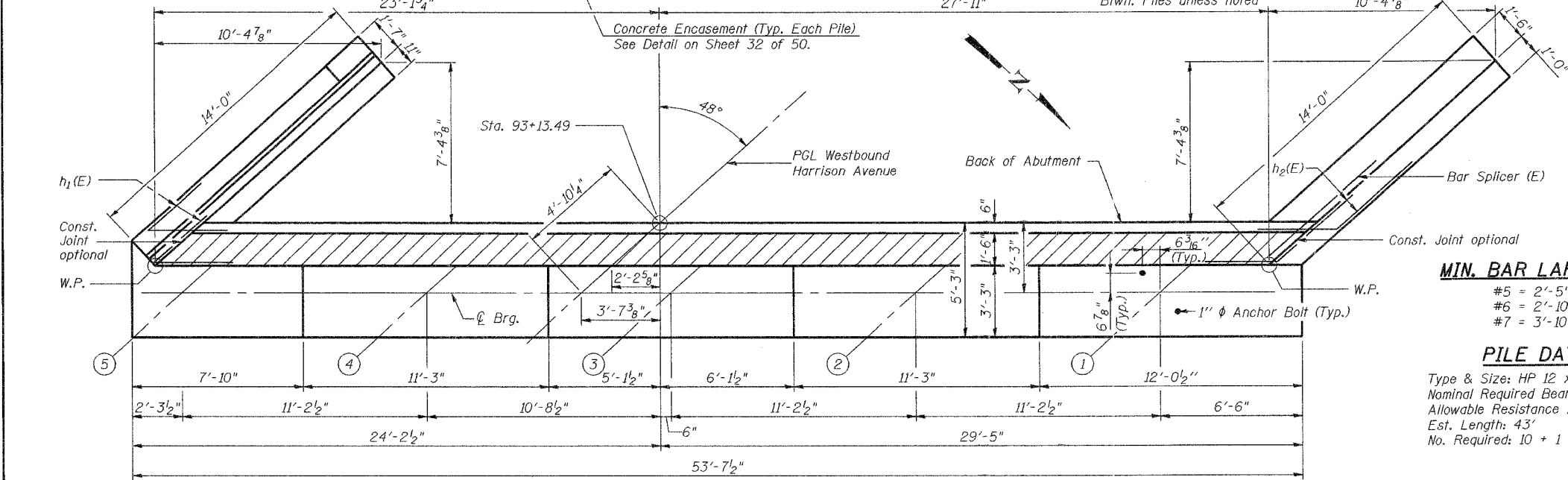
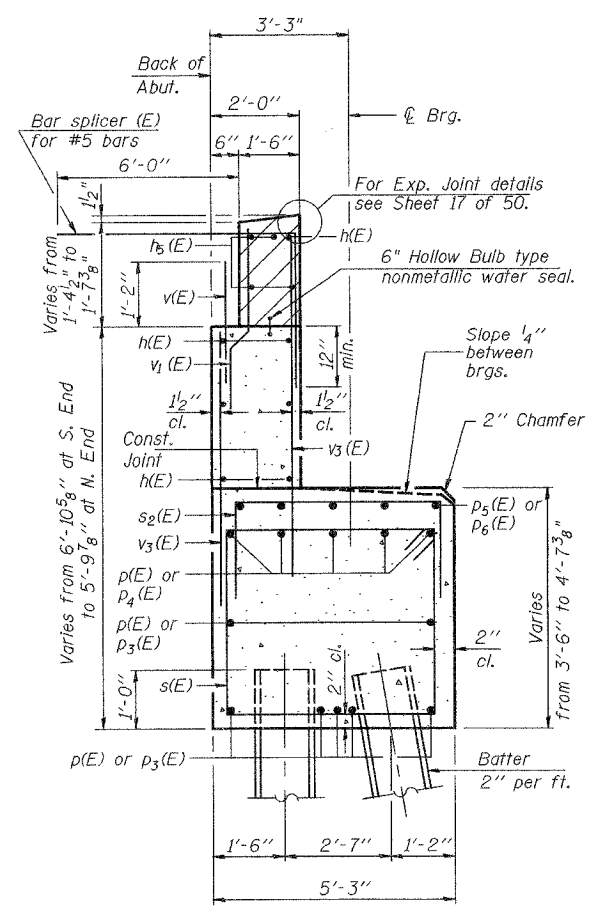
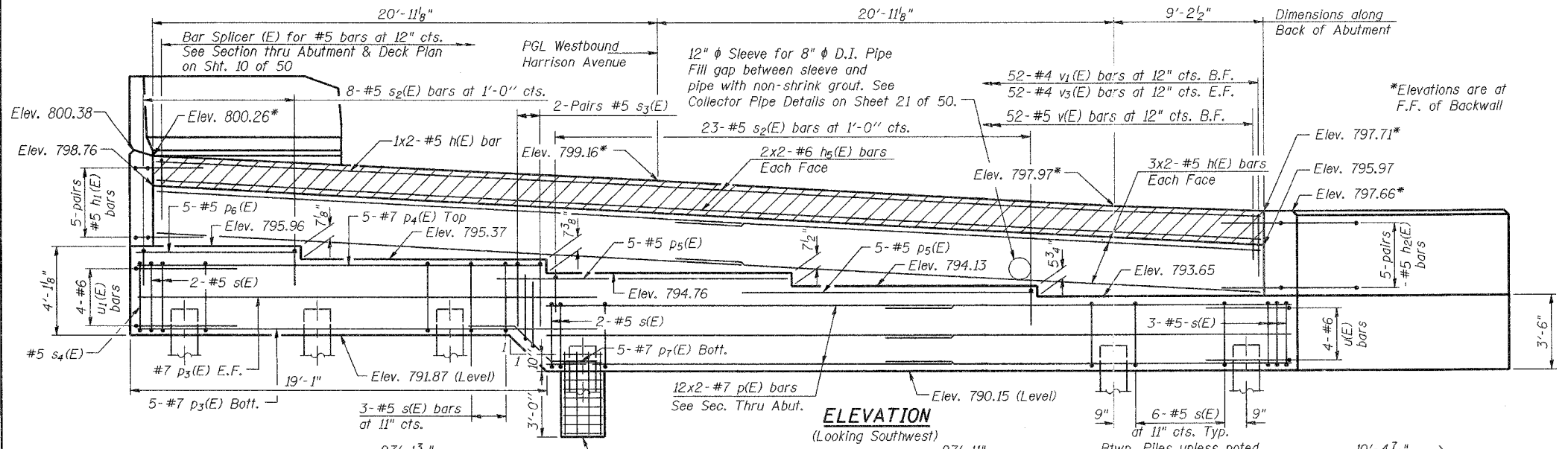


ROUTE NO.	SECTION	COUNTY	SHEET NO.	SHEETS
FAP 0525		WINNEBAGO	157	137
FED. ROAD DIST. NO. 7				
ILLINOIS FED. AID PROJECT				
92-00518-00-BR				

SHEET NO. 30
50 SHEETS



MIN. BAR LAP (U.N.)
 #5 = 2'-5"
 #6 = 2'-10"
 #7 = 3'-10"

PILE DATA
 Type & Size: HP 12 x 53 w/ Pile Shoes
 Nominal Required Bearing : 420 Kips
 Allowable Resistance Available : 140 Kips
 Est. Length: 43'
 No. Required: 10 + 1 test pile

NOTES
 Hatched area to be poured after superstructure forms have been removed. Quantity of concrete included with Concrete Superstructure.
 Space reinforcement in cap to miss anchor bolts. Pour steps monolithically with cap.
 Reinforcement bars designated (E) shall be epoxy coated.
 Quantity of concrete in end post included with Concrete Superstructure.
 Work this Sheet with Sheets 31 & 32 of 50.
 Bars indicated thus 4x2-#5 etc. indicate 4 lines of bars with 2 lengths per line.
 All edges will have 3/4" chamfer unless noted.
 For details of Bar Splicers see Sheet 44 of 50.
 B.F. denotes Back Face.
 F.F. denotes Front Face.
 E.F. denotes Each Face.

Corporate License Number 184-001-084

WEST ABUTMENT

WESTBOUND HARRISON AVENUE
 OVER UP & CC&P RAILROAD
 F.A.P. ROUTE 0525
 SECTION 02-00518-00-BR
 ROCKFORD, ILLINOIS
 STATION 95+25.35
 STRUCTURE NO. 101-6109

© Copyright Hanson Professional Services Inc. 2006

HANSON

JOB NO. 03R1751
 DATE 12/14/06

1/23/06 PM 7/17/06
 12/12/2006 10:31 PM
 1/03/06 03:07:51 Struck Sheet West Bound S-030-WB Westbound Plan.dgn
 LAYOUT SMK 7/17/06
 DRAWN MMW/JJR 8/17/06
 REVIEWED JMR 8/17/06