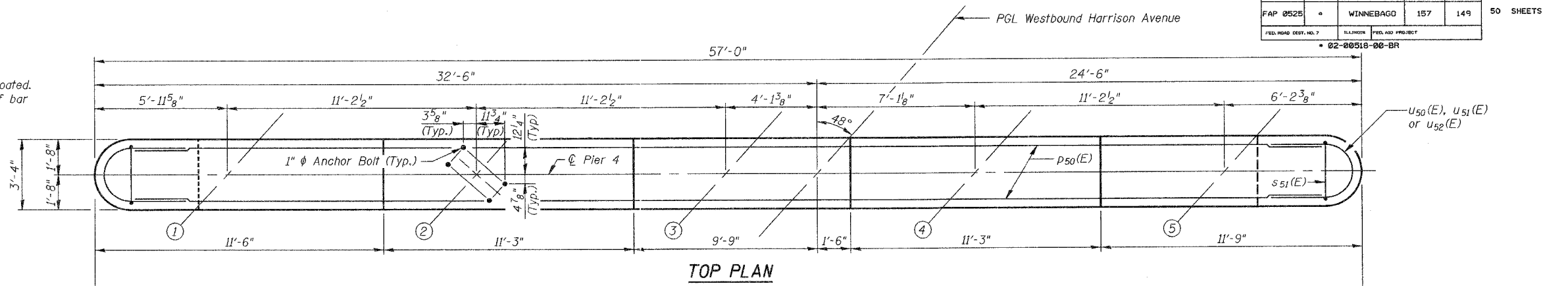
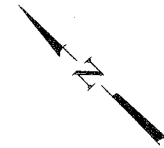


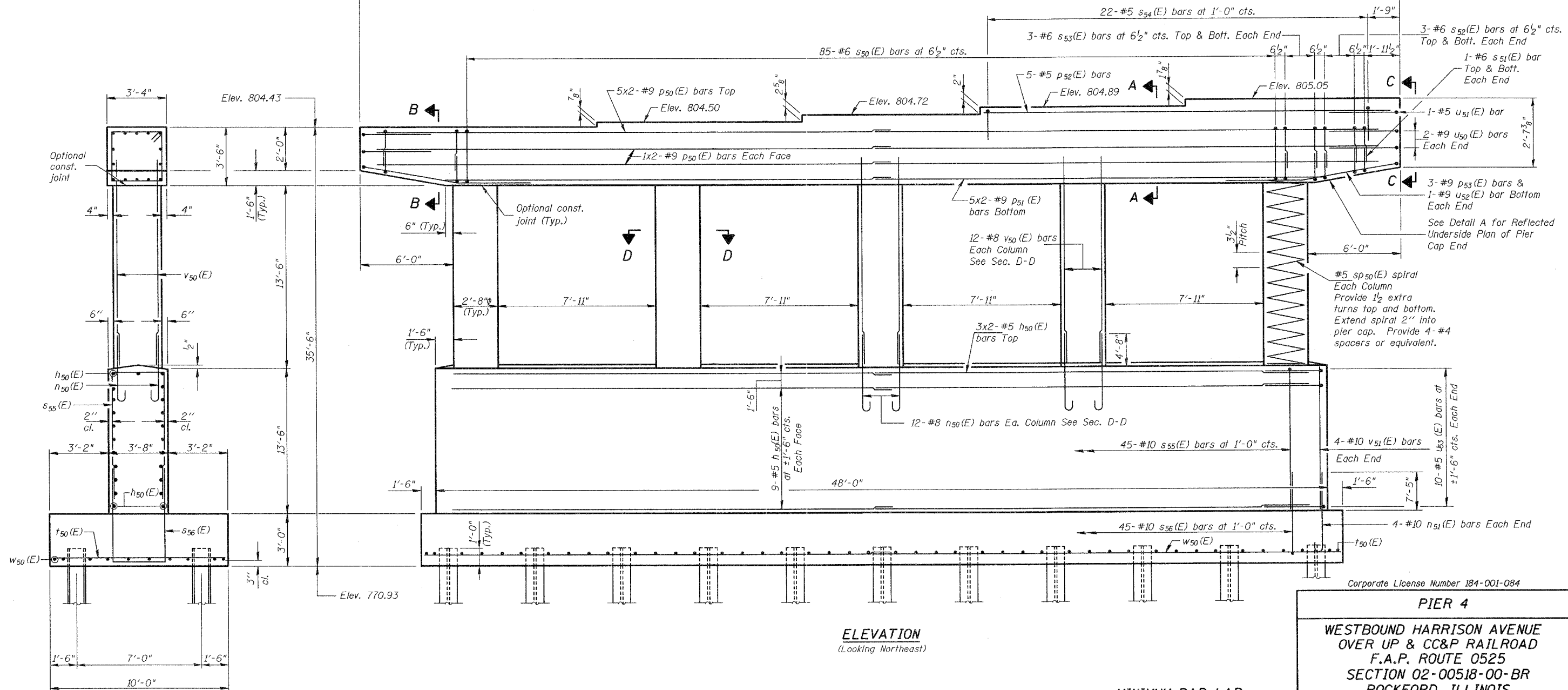
ROUTE NO.	SECTION	COUNTY	SHEETS	SHEET	SHEET NO. 42
FAP 0525	0	WINNEBAGO	157	149	50 SHEETS
FED. ROAD DIST. NO. 7	ILLINOIS	FED. AID PROJECT	02-00518-00-BR		

NOTES

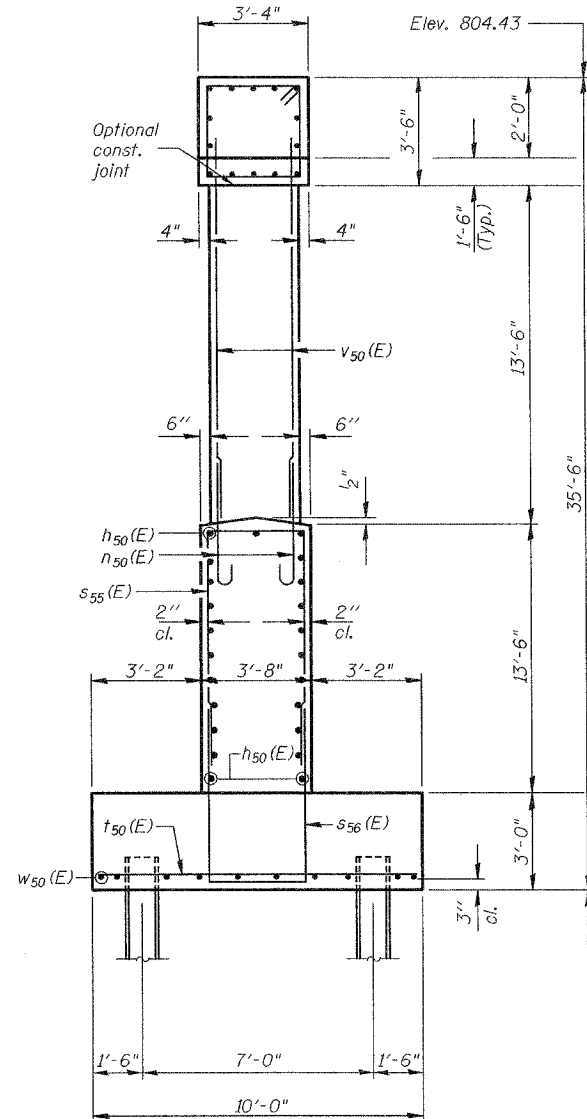
Space Reinforcement in cap to miss anchor bolts.
 Four steps monolithically with cap.
 Work this sheet with Sheet 43 of 50.
 Reinforcement Bars designated (E) shall be epoxy coated.
 Bar indicated thus 1x2 - #5 etc. indicates 1 line of bar with 2 lengths per line.



TOP PLAN



ELEVATION
(Looking Northeast)



END VIEW

MINIMUM BAR LAP

- HORIZONTAL**
- #5 - 2'-2" (Bottom of Footing)
 - #5 - 3'-0"
 - #9 - 8'-1"

Corporate License Number 184-001-084

PIER 4

**WESTBOUND HARRISON AVENUE
 OVER UP & CC&P RAILROAD
 F.A.P. ROUTE 0525
 SECTION 02-00518-00-BR
 ROCKFORD, ILLINOIS
 STATION 95+25.35
 STRUCTURE NO. 101-6109**

© Copyright Hanson Professional Services Inc. 2006

HANSON

JOB NO. 03R1751
 DATE 12/14/06

12/03/06 PM 03/01/06
 12/12/2006 12:03 PM 07/13/06
 12/03/06 03:17:51 Structural Steel West Bound S-C42-WB-Pier 4.dgn
 LAYOUT JKR 03/01/06
 DRAWN MGN/JAR 07/13/06
 REVIEWED FLN 08/02/06